



CSOP3050CM/B/T

FEATURES

- Elegant modern aesthetics
- New, contemporary styling
- Features both plumbed and non-plumbed options
- Sleek Full-color LCD Touchscreen
- Save up to 50 personalized favorite recipe presets.
- 11 Cooking Modes
- 1750-watt recessed broil element
- 2.4 cubic-foot oven cavity
- Three full-extension rack positions and one standard position
- Large 40-fluid ounce water tank
- Temperature Probe

ACCESSORIES

- Broiler Rack
- Descaling Solution
- Perforated Pan - 12 3/4" x 1 1/2" x 7"
- Perforated Pan - 24 3/4" x 1 3/8" x 14 1/2"
- Porcelain Steam Enameled Broil Pan
- Solid Pan - 12 3/4" x 1 1/2" x 7"
- Solid Pan - 24 3/4" x 1 3/8" x 14 1/2"
- Standard Oven Rack
- Temperature Probe

Accessories available through an authorized dealer.  
For local dealer information, visit [subzero-wolf.com/locator](https://subzero-wolf.com/locator).

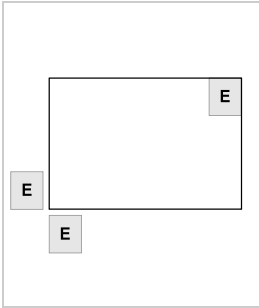




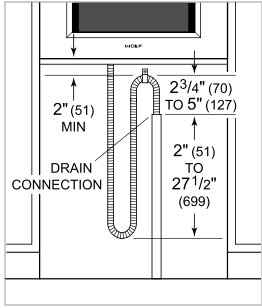
PRODUCT SPECIFICATIONS

Model	CSOP3050CM/B/T
Dimensions	29 7/8"W x 17 7/8"H x 22 1/2"D
Oven Interior Dimensions	17 1/2"W x 10 3/4"H x 15 1/8"D
Overall Capacity	2.4 cu. ft.
Usable Capacity	1.8 cu. ft.
Door Clearance	14 3/16"
Weight	91 lbs
Electrical Supply	240/208 VAC, 60 Hz
Electrical Service	20 amp dedicated circuit
Plumbing Supply	6.5' (2 m) braided tubing with 3/8" female compression fitting
Plumbing Pressure	15–145 psi
Conduit Length	4 Feet

ELECTRICAL

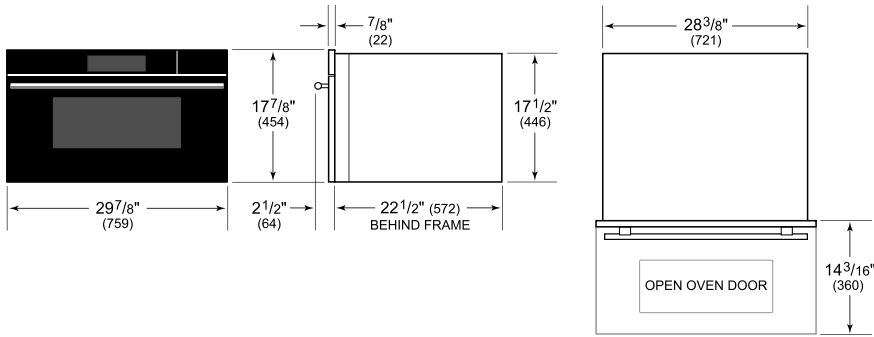


PLUMBING

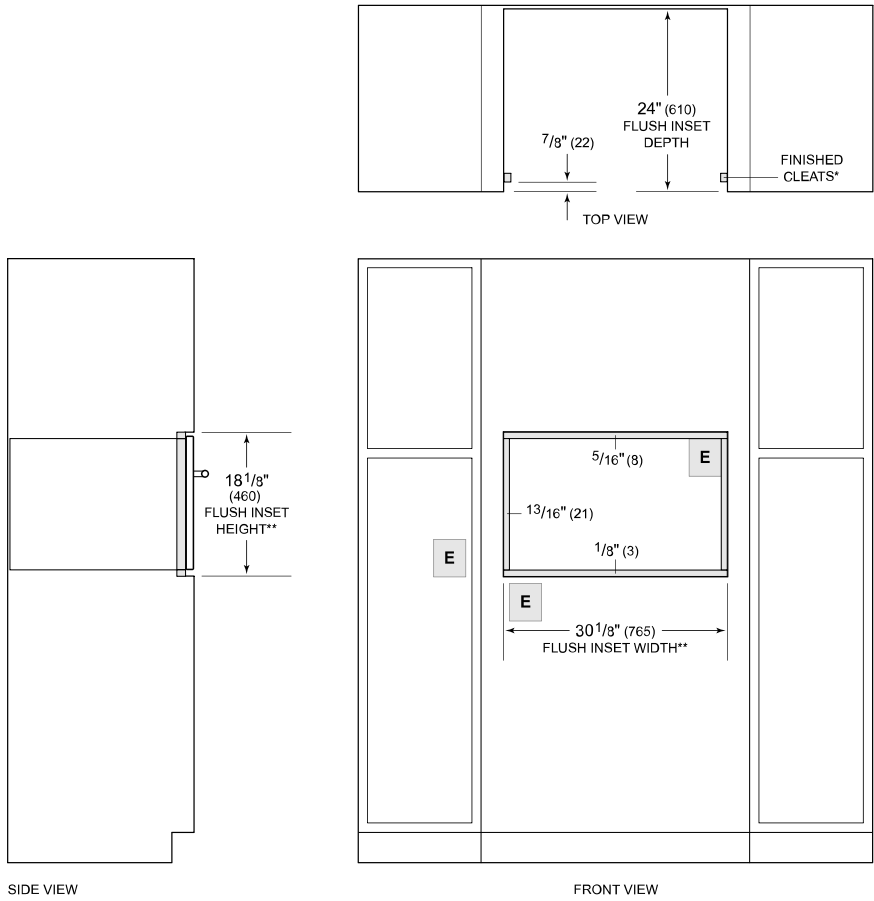


**NOTE:** Dimensions in parenthesis are in millimeters unless otherwise specified

DIMENSIONS



FLUSH INSTALLATION



**\*Will be visible and should be finished to match cabinetry.**  
**\*\*Dimension provides minimum reveals.**  
**NOTE:** Location of electrical supply within opening may require additional cabinet depth.