

SAMSUNG

QUICK SETUP GUIDE

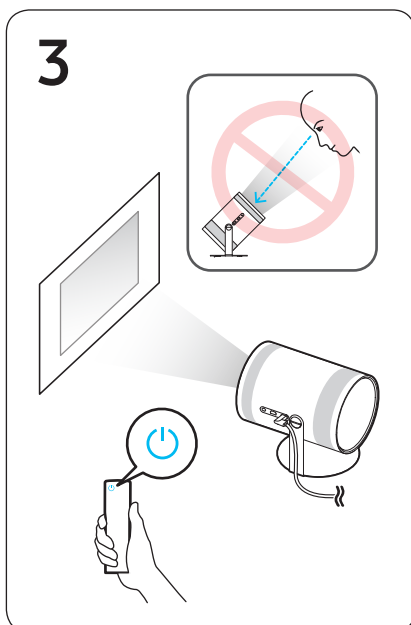
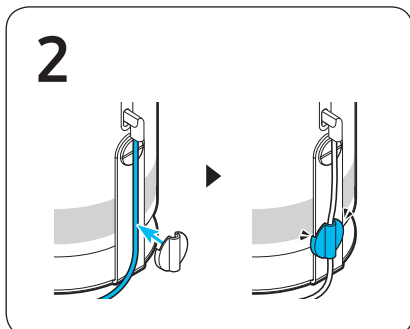
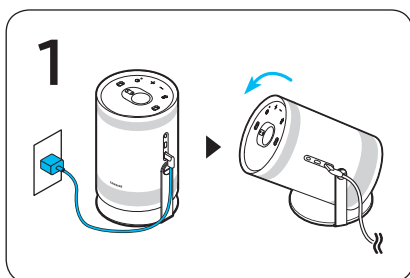
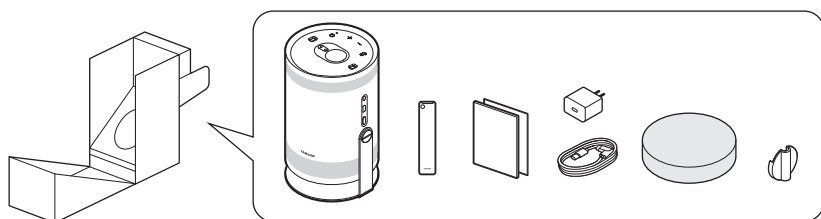
GUIDE D'INSTALLATION RAPIDE

GUÍA RÁPIDA DE CONFIGURACIÓN

GUIA RÁPIDO DE INSTALAÇÃO



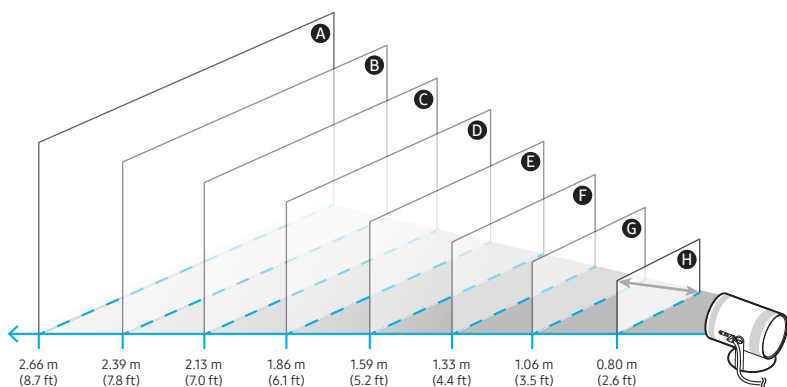
BP81-00519A-00





- | | |
|--|---|
| A 100 inches / 2540 mm / 254.0 cm | E 60 inches / 1524 mm / 152.4 cm |
| B 90 inches / 2286 mm / 228.6 cm | F 50 inches / 1270 mm / 127.0 cm |
| C 80 inches / 2032 mm / 203.2 cm | G 40 inches / 1016 mm / 101.6 cm |
| D 70 inches / 1778 mm / 177.8 cm | H 30 inches / 762 mm / 76.2 cm |

* inches / 인치 / pouces / pulgadas / polegadas



[English]

The screen sizes for each projection distance may differ depending on the installation environment.

[Français]

Les tailles d'écran pour chaque distance de projection peuvent différer selon l'environnement d'installation.

[Español]

Los tamaños de las pantallas para cada distancia de proyección pueden variar según el entorno de instalación.

[Português]

Os tamanhos da tela para cada distância de projeção podem diferir dependendo do ambiente de instalação.

