

# MAST486GRTBXT

## MASTER SERIES

### 48" GAS RANGETOP 6 BRASS BURNERS + ELECTRIC GRIDDLE



Bring Italian design and precision into your kitchen with the Bertazzoni signature counter-depth rangetop, designed to install flush with surrounding countertops and cabinets.

Cook like a pro on the six Monobloc brass burners and cast iron contour grates, spaciouly laid out to accommodate pots of different sizes.

Crank up the heat to boil water, sear meat or cook with a wok using the two power burners with dual ring flame, which boil water faster than any burner in their class.

Delicately melt chocolate on the simmer burner.

Cook plentiful breakfasts for the whole family on the extra large stainless steel griddle with integrated grease catcher, and turn it into a handy prep surface with the integrated cover when not in use.

Protect your house and your family with the 100% fail-safe thermocouple technology that immediately shuts off the flow of gas in case of a flame outage.

Clean in no time after cooking, thanks to the seamless one-piece stainless worktop with integrated spill-control dams.

Designed and manufactured with pride by Bertazzoni in Italy.

Industry leading 2 years parts and labor warranty.

#### PRODUCT FEATURES

Maintop	6 burners + stainless steel griddle with cover
Burner power	2 power burners 19000 BTU 1 rapid burner 10400 BTU 2 medium burners 5900 BTU 1 simmer burner 3500 BTU
Griddle power	1100 W
Ignition system	Electric with thermocouple safety device
Grates	Cast iron
Included accessories	1" stainless steel trim Wok ring Simmer ring

#### TECHNICAL SPECIFICATIONS

Electrical supply	120 V 60 HZ - 1100 W 10 Amps
Power connection	NEMA 5-15P with 59" power cord
Certification	UL
Warranty	2 years parts & labor
Gas type	NG
Conversion kit included	LPG
Packaging dimensions and weight	W 52" H 12 3/8" D 30 1/8" 112.5 lbs

#### OPTIONAL ACCESSORIES

CIG36	Cast iron griddle for PROF/MAST/HERT Series ranges and rangetops
-------	--

# MAST486GRTBXT

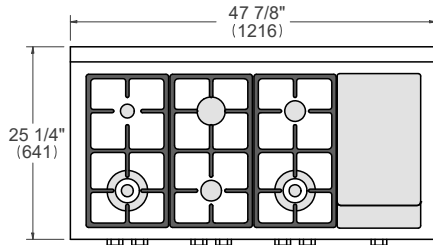
MASTER SERIES

48" GAS RANGETOP 6 BRASS BURNERS + ELECTRIC GRIDDLE

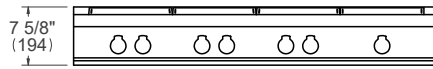


## PRODUCT DIMENSIONS

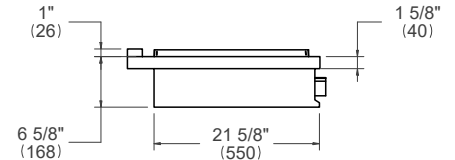
TOP VIEW



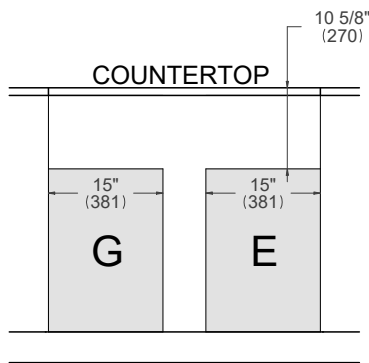
FRONT VIEW



SIDE VIEW



## ELECTRICAL & GAS CONNECTION



**E** A properly-grounded, horizontally-mounted electrical receptacle should be installed according to this drawing.

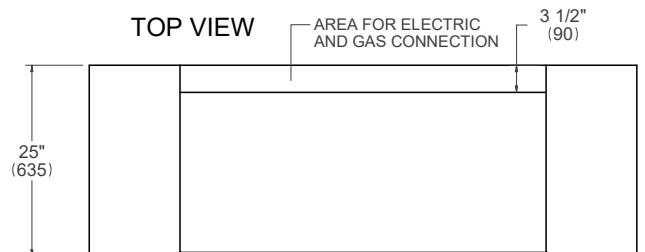
**G** An agency-approved, properly-sized manual shut-off valve should be installed according to this drawing.

## INSTALLATION REQUIREMENTS

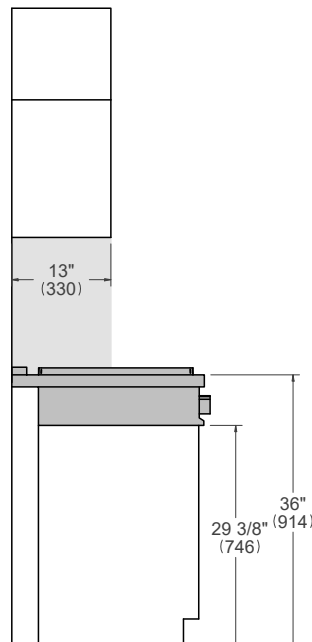
Combustible material cannot be installed within shaded area.

For installation with an updraft or downdraft hood as well as any OTR, refer to the hood/OTR manufacturer's installation requirements.

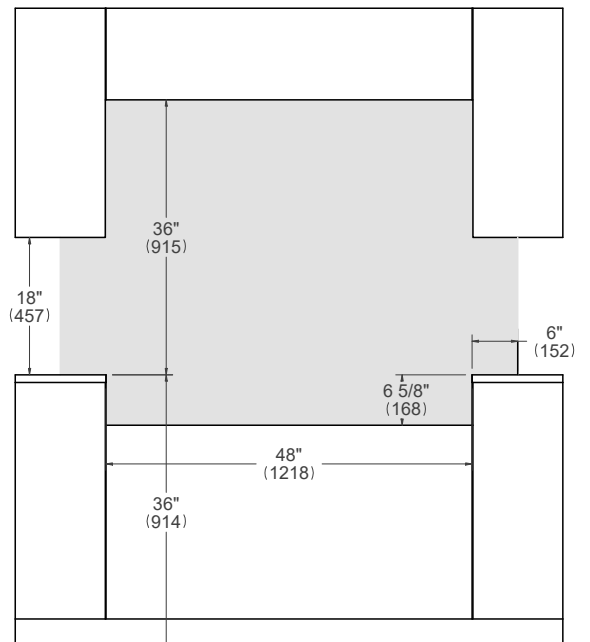
## CUTOUT DIMENSIONS



SIDE VIEW



FRONT VIEW



For installation of multiple products in combination, refer to the Design Guide at [us.bertazzoni.com](http://us.bertazzoni.com) or [ca.bertazzoni.com](http://ca.bertazzoni.com)

**Disclaimer:** while every effort has been made to ensure the accuracy of the information contained in this document, Fratelli Bertazzoni reserves the right to change it at any time without notice. For detailed installation instructions, consult the installation manual. Fratelli Bertazzoni, Bertazzoni and the winged wheel brand icon are registered trademarks of Bertazzoni Spa.