

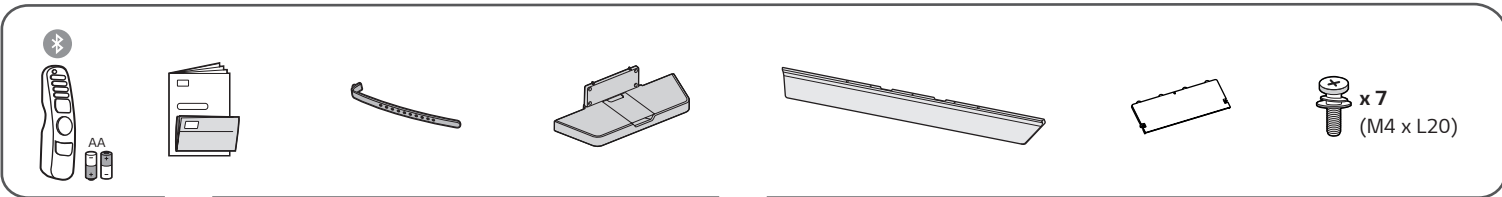
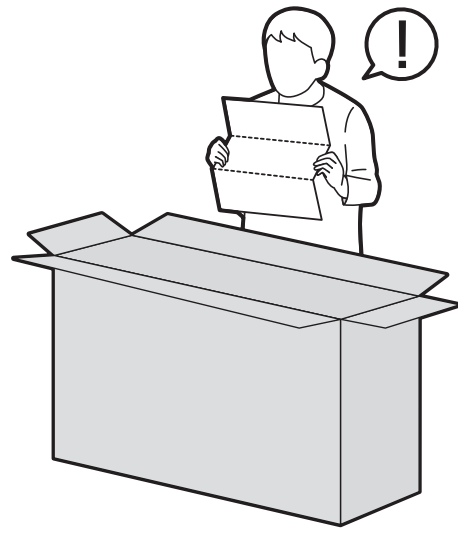
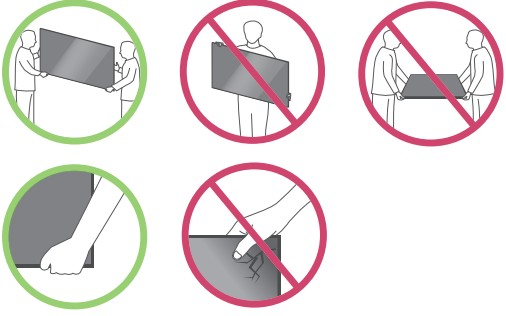


* M F L 7 1 7 5 6 4 6 5 *

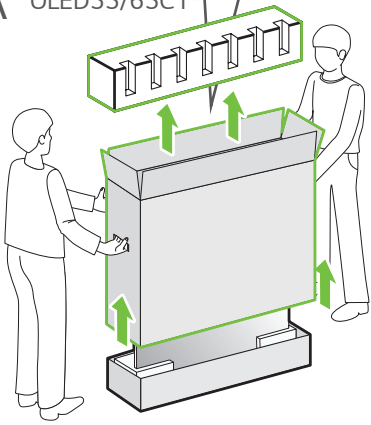
(2102-REV00)

Printed in Korea

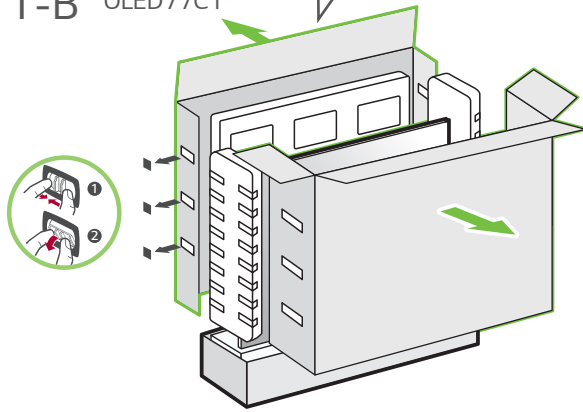
OLED55C1AUB	OLED65C1AUA	OLED77C1AUA
OLED55C1PUA	OLED65C1AUB	OLED77C1AUB
OLED55C1PUB	OLED65C1PUB	OLED77C1PUB



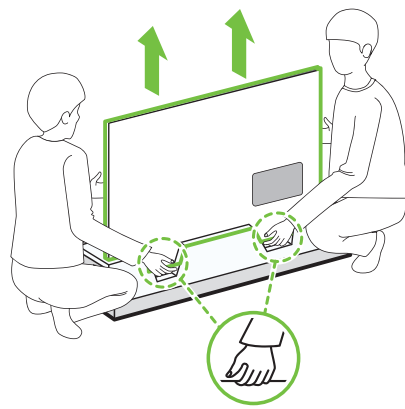
1-A OLED55/65C1*



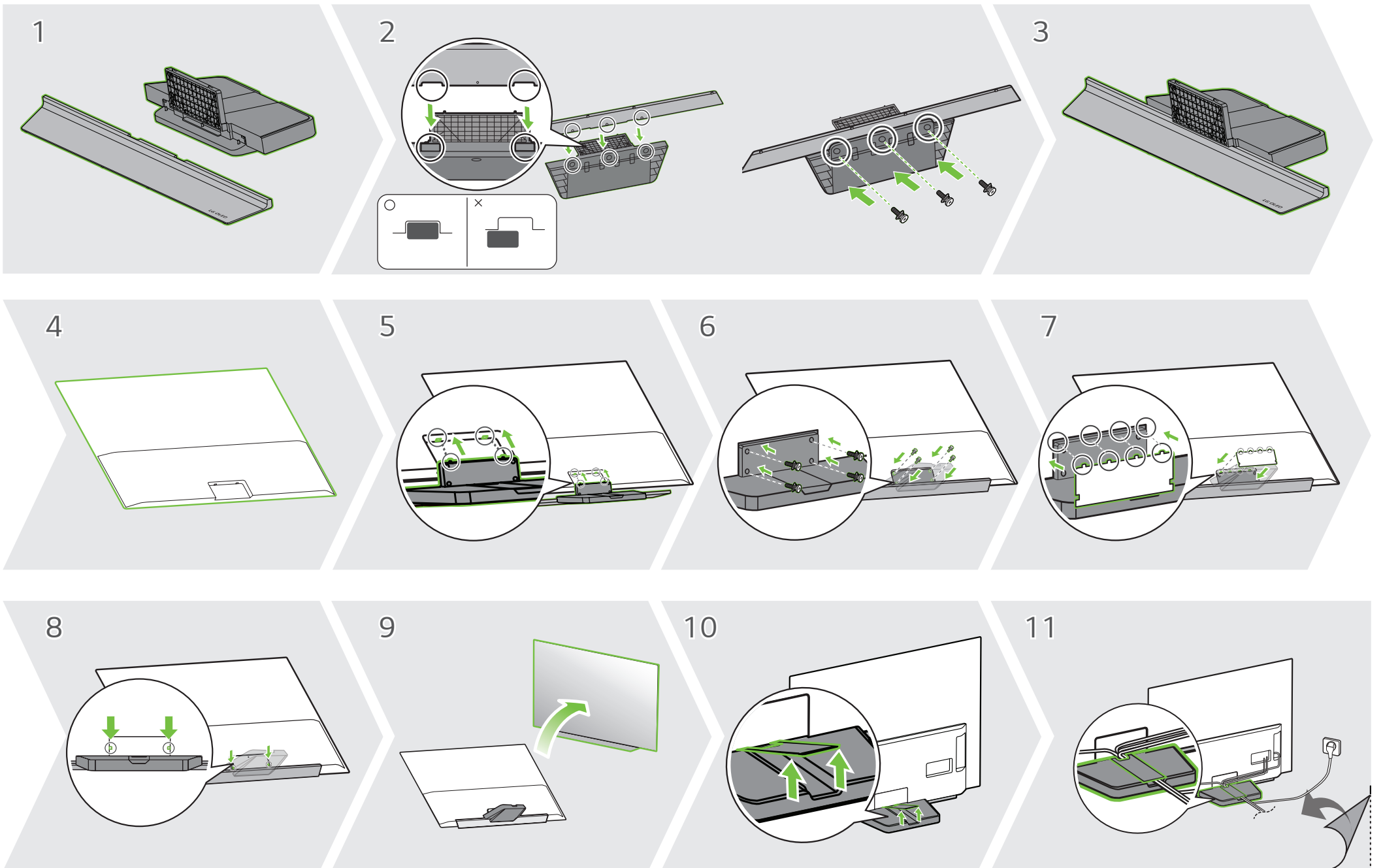
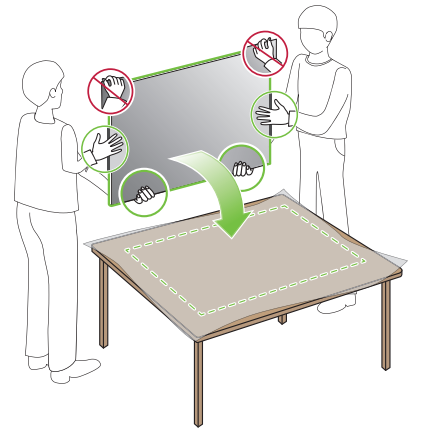
1-B OLED77C1*



2



3



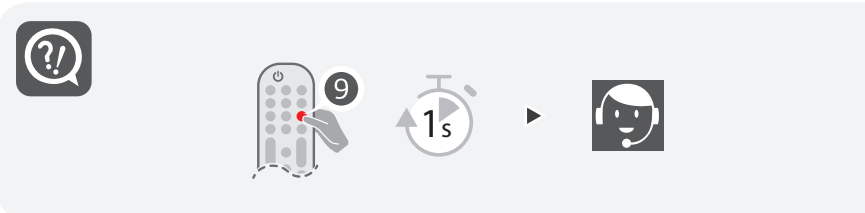
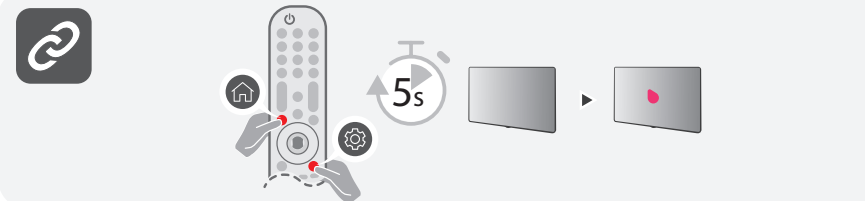
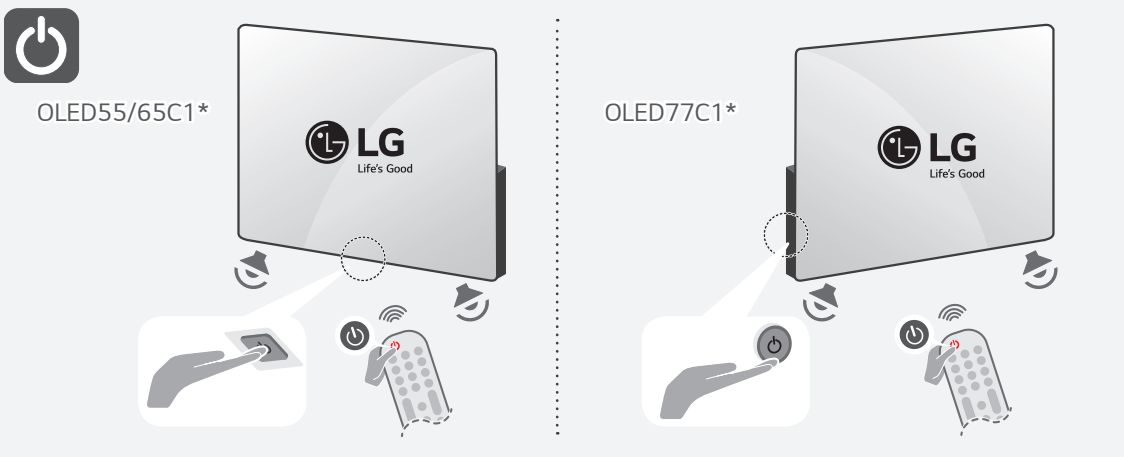
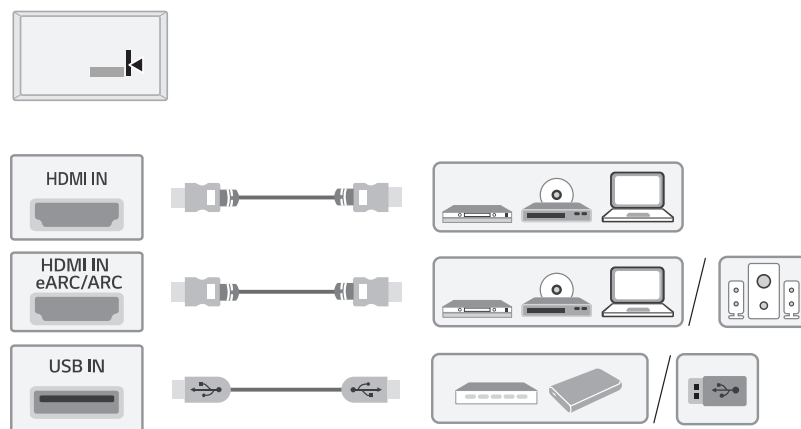
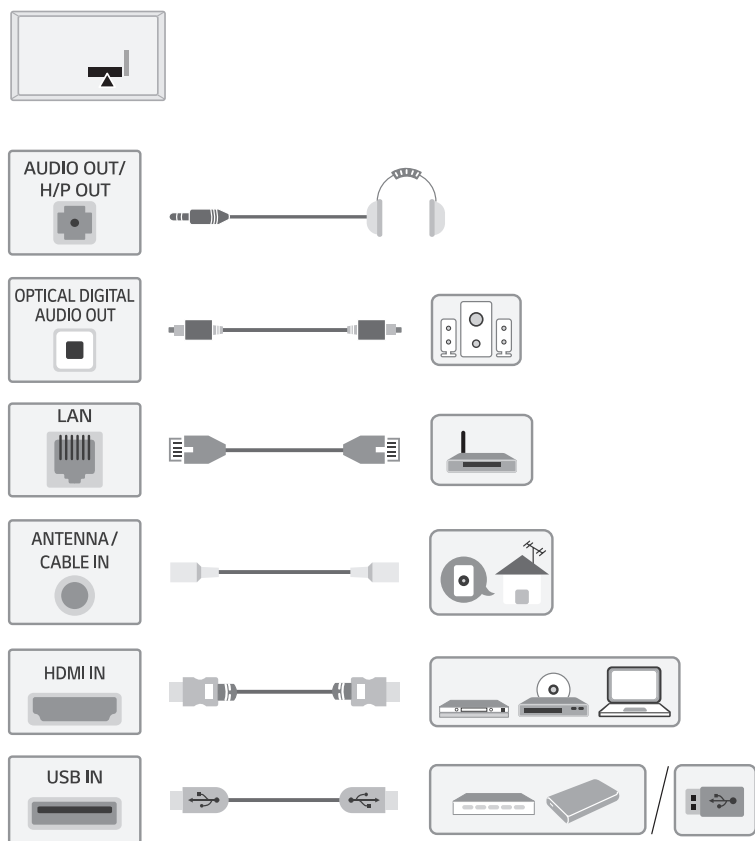


www.lg.com/us/support

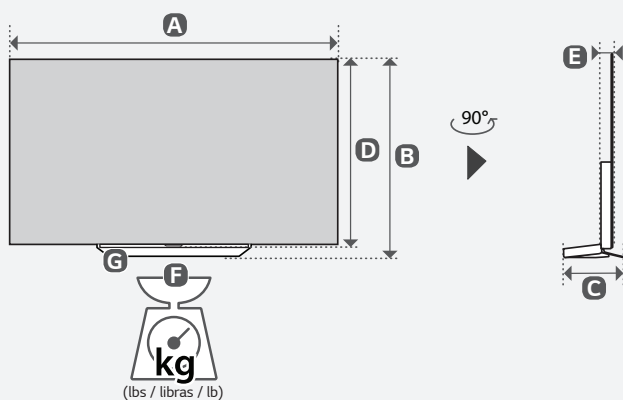
ENGLISH
Easy TV Connect Guide
(Animation)

ESPAÑOL
Guía Rápida de Conexión
del televisor
(Sólo en Inglés)

FRANÇAIS
Guide simplifié pour la con-
nexion du téléviseur (Offert
en anglais seulement)



A, B, C, D, E: mm (inches / pulgadas / po)
F, G: kg (lbs / libras / lb)



MODELS MODELOS MODÈLES	A		B		C		D		E		F		F - G		Power consumption
	mm	inches	mm	inches	mm	inches	mm	inches	mm	inches	mm	inches	mm	inches	Consumo de potencia
	Consumption électrique														
OLED55C1AUB OLED55C1PUA OLED55C1PUB	1,228 (48.3)	1 228 (48,3)	738 (29)	738 (29)	251 (9.8)	251 (9.8)	706 (27.7)	706 (27.7)	46.9 (1.8)	46.9 (1.8)	23.0 (50.7)	23,0 (50,7)	18.9 (41.6)	18,9 (41,6)	347 W
OLED65C1AUA OLED65C1AUB OLED65C1PUB	1,449 (57)	1 449 (57)	862 (33.9)	862 (33,9)	251 (9.8)	251 (9.8)	830 (32.6)	830 (32,6)	46.9 (1.8)	46,9 (1,8)	32.6 (71.8)	32,6 (71,8)	24.0 (52.9)	24,0 (52,9)	467 W
OLED77C1AUA OLED77C1AUB OLED77C1PUB	1,723 (67.8)	1 723 (67,8)	1,023 (40.2)	1 023 (40,2)	269 (10.5)	269 (10,5)	993 (39)	993 (39)	55.3 (2.1)	55,3 (2,1)	35.9 (79.1)	35,9 (79,1)	26.7 (58.8)	26,7 (58,8)	645 W

Power requirement / Alimentación requerida / Alimentation

AC 120 V - 50 / 60 Hz



ENGLISH Read **Safety and Reference**.

ESPAÑOL Leer **Seguridad y Consultas**.

FRANÇAIS Lisez **Sécurité et références**.

ENGLISH

Easy Setup Guide

Please read this manual carefully before operating your set and retain it for future reference.

ESPAÑOL

Guía Rápida de Configuración

Lea atentamente este manual antes de poner en marcha el equipo y consérvelo para futuras consultas.

FRANÇAIS

Guide de configuration rapide

Avant d'utiliser l'appareil, veuillez lire attentivement ce manuel et le conserver pour pouvoir vous y reporter ultérieurement.

⊕ : Depending upon model / Según el modelo / Selon le modèle