

# SCB711 | PRO Collection

**Cyclone**<sup>®</sup>  
Breathe Better



## Wall Mount

Bold and masculine by design, the SCB711 is a professional grade range hood. The three-speed push button control panel gives you complete control of the fan while bright LED lights illuminate the cooking area. Comes standard with strong and easily removable dishwasher-safe baffle filters to keep your kitchen clean and keep you breathing easy. Fitted with a time-delay OFF feature up to nine minutes.

## Green Features



3 Speed  
Push Button  
Control Panel



Dishwasher Safe  
Baffle Filters



Grease Tray



Long-Lasting  
LED Lights



Time-Delay  
OFF Feature



Grease Cup



Model	Colour	Ducting	Filters	Size	CFM
SCB71130	Stainless Steel	6"	Baffle	30"	650
SCB71136	Stainless Steel	6"	Baffle	36"	650

Cyclone Range Hoods Inc.

1361 Huntingwood Drive, Unit 16, Toronto, ON, M1S 3J1, Canada.

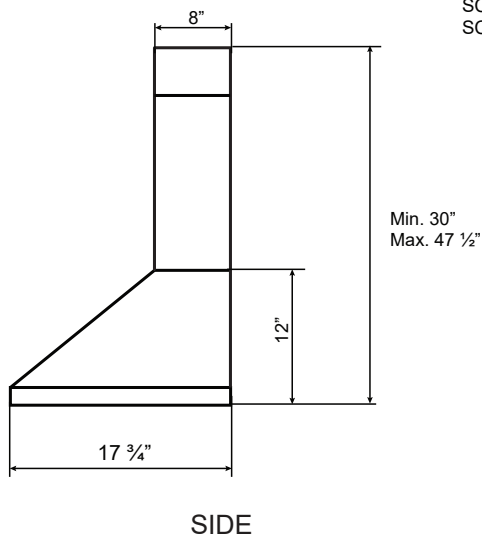
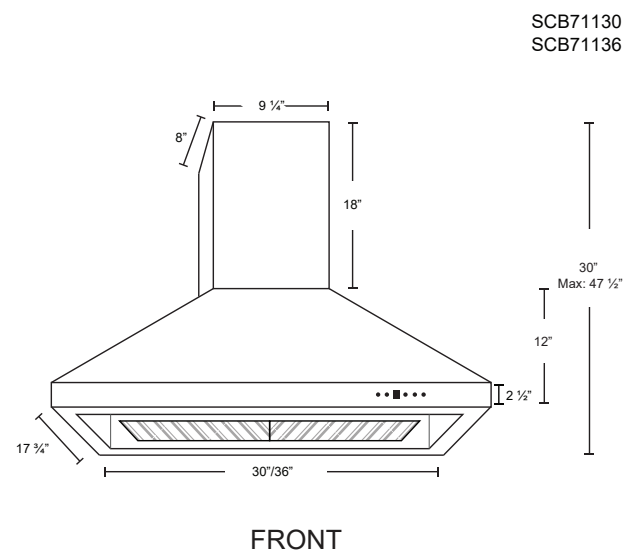
Toll Free: 1-888-293-5662 Tel: (416) 293-0933 Fax: (416) 293-4793 Website: [www.CycloneRangeHoods.com](http://www.CycloneRangeHoods.com)

# SCB711 | PRO Collection



## Features

- Wall mount range hood
- 6" round duct adapter
- Non-stick aluminum fan blades
- 3 speed push button control
- 2 LED lights (2 x 1.4W, 4000K)
- Quick release dishwasher-safe baffle filters
- Standard chimney fits up to 9 ft. ceiling
- Up to 9 minute time-delay OFF feature
- Plug-in connection



## Options

- Chimney Flues:
  - A1.CH10 - short (7'-8' ceilings)
  - A1.CH18 - standard (8'-9' ceilings)
  - A1.CH30 - extended (9'-11' ceilings)
- Widths: 30", 36"

## Specifications

- |   |  |  |
|---|--|--|
| <ul style="list-style-type: none"><li>▪ Air Flow Volume: 650 CFM</li><li>▪ Electrical Connection: 120V/60Hz</li><li>▪ Power Consumption: 240 Watts</li><li>▪ Current: 2.0 Amps</li><li>▪ Fan Speed: 1599 RPM</li><li>▪ Fan Type: Centrifugal Blower</li></ul> | <ul style="list-style-type: none"><li>▪ Finishes: Stainless Steel</li><li>▪ Filters: Stainless Steel Baffle</li><li>▪ Ducting: 6" Round</li><li>▪ Dimensions: Width: 30", 36"<br/>Height: 47 1/2"<br/>Depth: 17 3/4"</li></ul> | <ul style="list-style-type: none"><li>▪ Noise Level: Min. 2 Sones<br/>Max. 7 Sones</li></ul> |
|---|--|--|



Toronto • Vancouver • Boston

[www.CycloneRangeHoods.com](http://www.CycloneRangeHoods.com)