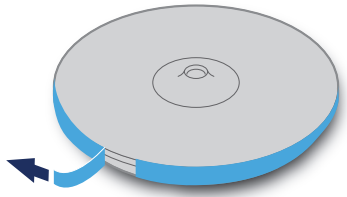


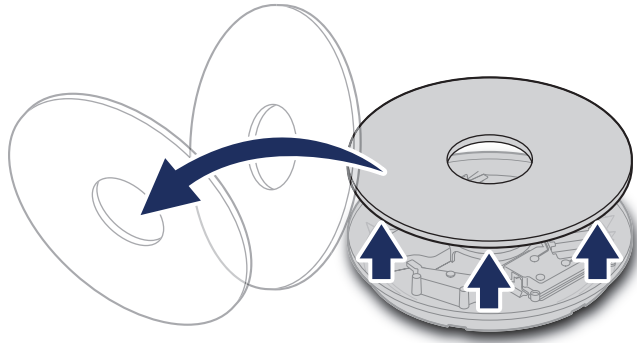
Quick Start Guide
Guide de démarrage rapide

FOLLOW THESE STEPS

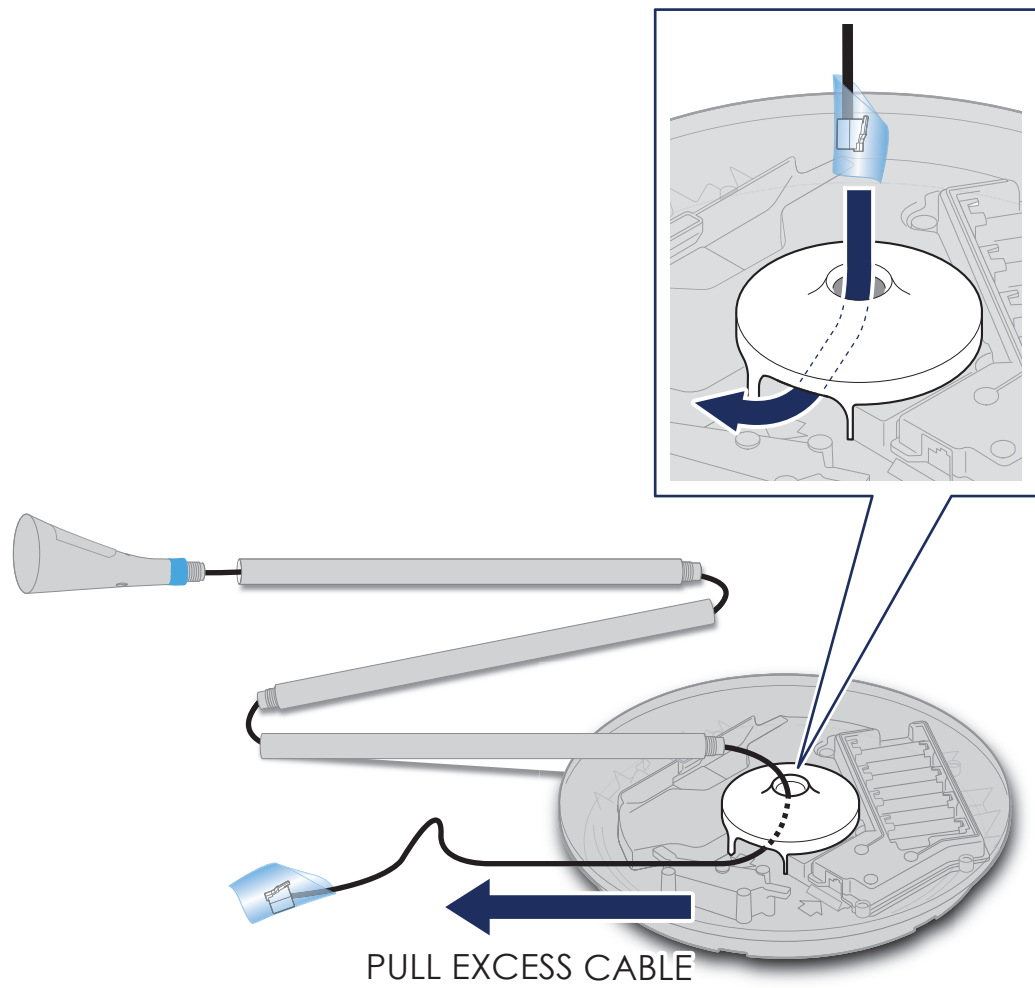
1 Remove Tape



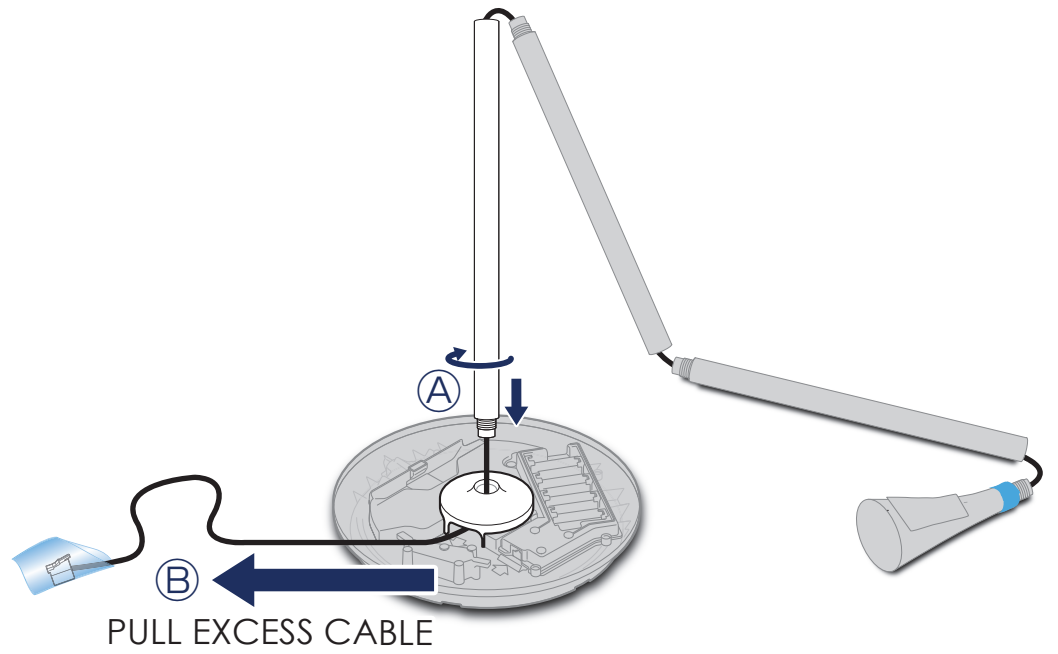
2 Remove Lid
Set aside until Step 9



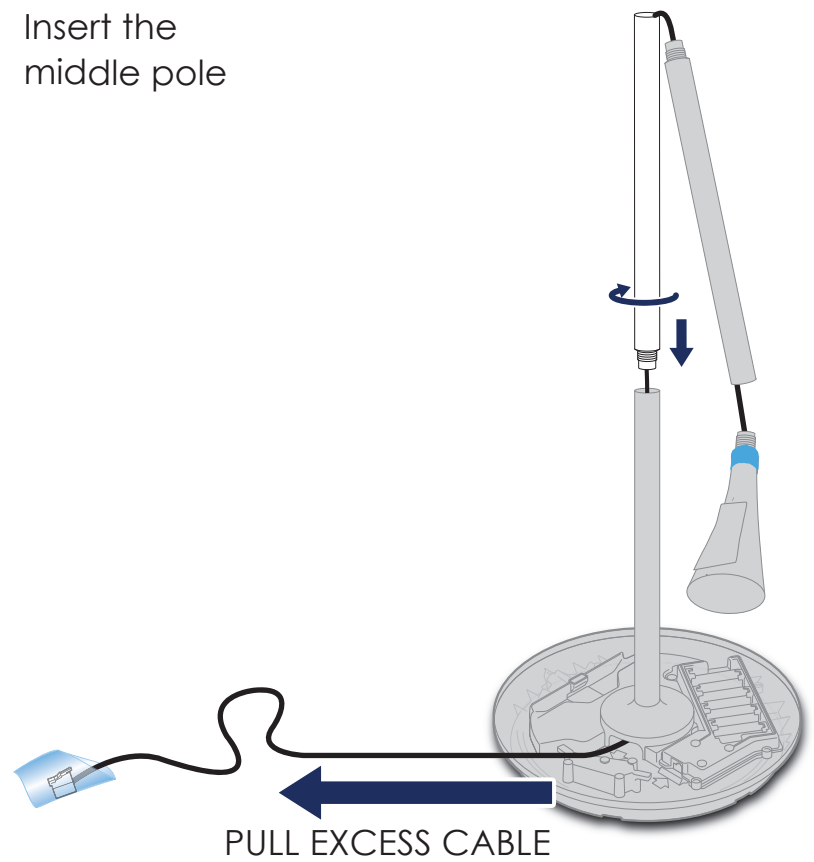
3 Feed cable THROUGH the centre hole to side



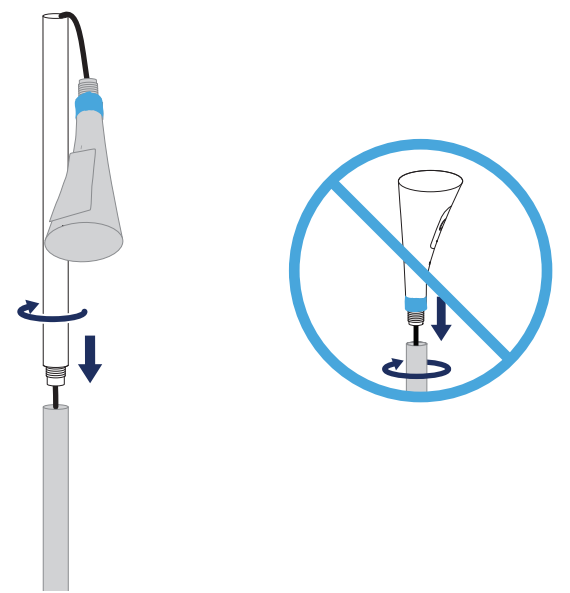
4 Insert the first pole **A**
Pull out excess cable **B**



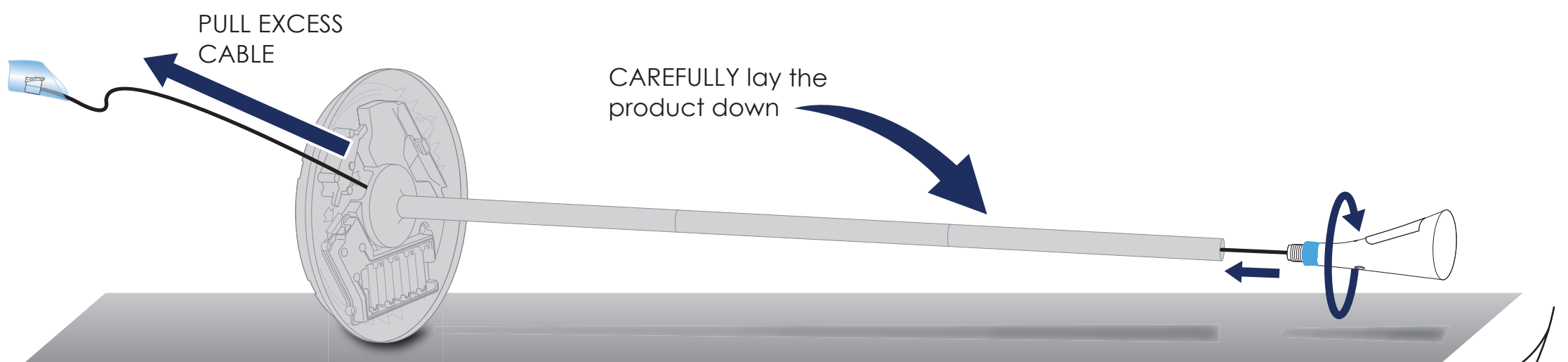
5 Insert the middle pole



6 Continue with third pole

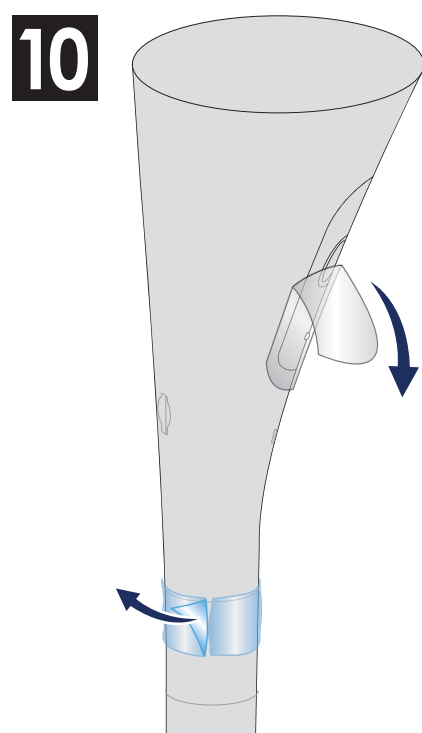
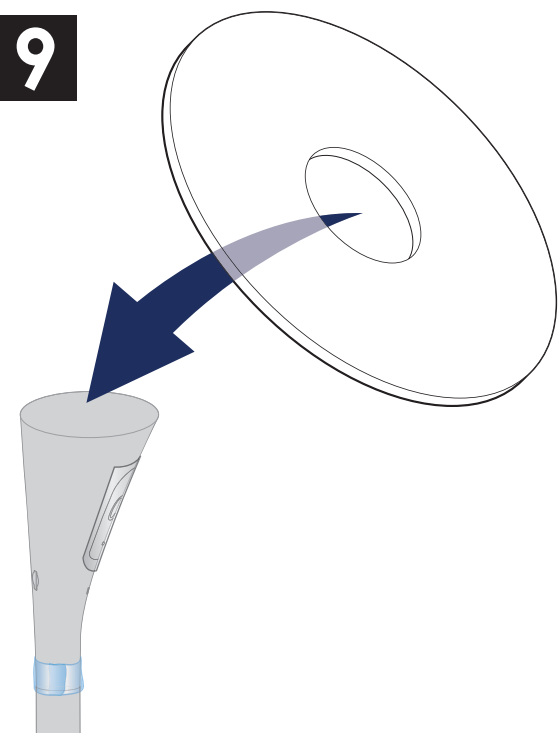
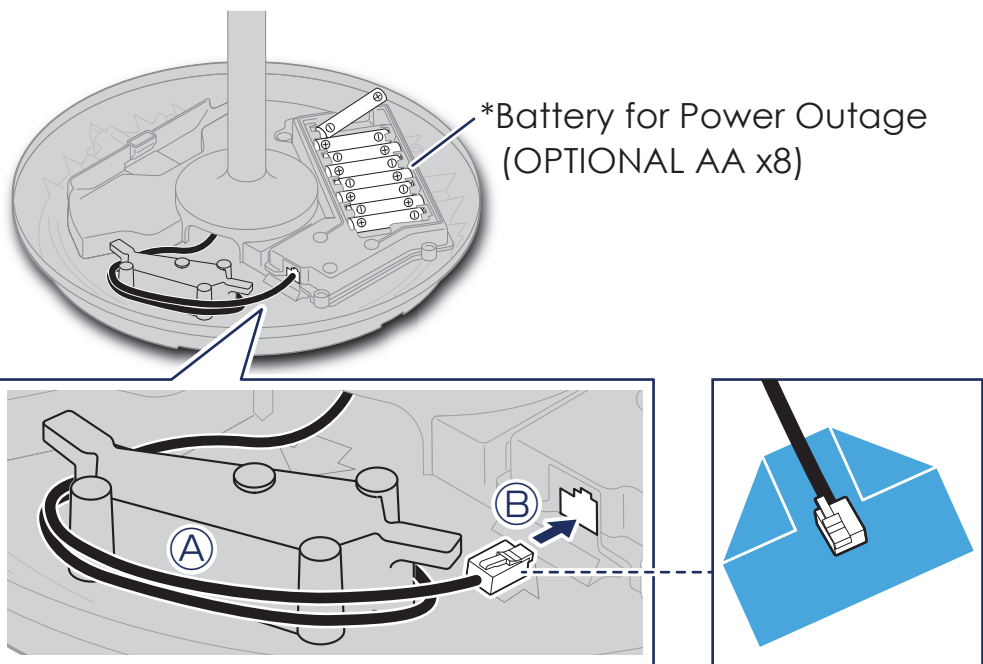


7 PULL EXCESS CABLE from Base, THEN Assemble the Head unit





- 8** Locate the jack and WIND the excess cord as shown below (A)
Remove the protective tape and plug in (B)



Get the App

Download the HomeHawk™ app on your smartphone by searching for "Panasonic HomeHawk" on the App Store or Google Play™.
Compatible with iPhone 5s and later, iPad Air and later (iOS 10 and later), Android™ devices (Android 4.1 and later), as of February 2019



Already using the app for other HomeHawk™ cameras?
Make sure your app is updated to the latest version.

In-App Setup

Select the device **FLOOR Camera** and follow the on-screen instructions.

Need More Help?

If you still need more help, please refer to the enclosed **Information and Troubleshooting Guide** for additional information, handy tips, and detailed instructions. Or visit us **online** at
www.panasonic.ca/english/support
to view helpful how-to videos, find useful tips, and to get support.

Téléchargement de l'application

Téléchargez l'application HomeHawk™ sur votre téléphone intelligent en cherchant "Panasonic HomeHawk" sur la boutique en ligne App Store ou Google Play™.
Compatible avec les appareils iPhone 5s et ultérieurs, iPad Air et ultérieurs (iOS 10 et plus récents) et les appareils Android™ (Android 4.1 et plus récents), en date de février 2019



Vous utilisez déjà l'application pour d'autres caméras HomeHawk™?
Assurez-vous que vous disposez de la plus récente version de l'application.

Configuration de l'application

Sélectionnez l'appareil **Caméra PLANCHER** et suivez les instructions à l'écran.

Vous avez besoin d'aide?

Pour de l'aide supplémentaire, consultez le **Guide d'information et de dépannage** inclus comportant des renseignements, des conseils pratiques et des instructions détaillées. Ou visitez le **site**
www.panasonic.ca/french/support
pour des vidéos utiles, des conseils pratiques et du soutien.