

CAR AUDIO | 2018







We, Focal,  
strive to create sound  
equipment that honours the artist's  
musical creation and empowers you to  
feel a new dimension of the music. We want  
every nuance to be revealed with precision and  
purity. To do this, we push the limits of the current  
boundaries in sound technology, and go beyond  
the traditional approach thinking differently.  
With Focal, let the sound thrill your senses  
until you go beyond the usual perception  
of music and discover new fields  
of emotion.

LISTEN BEYOND



# “ THE AMPLIFIED DRIVING EXPERIENCE ”

---



For nearly four decades, Focal has been applying its unique sound signature to speaker drivers and high-end loudspeakers. We are renowned worldwide for our innovations which have given birth to exclusive technologies, and some of our loudspeakers have gone on to become world-renowned references.

Our philosophy is to promote our expertise made in France: 100% of our products are designed and developed by our engineers, and a large part of our collections are made in France in our own workshops. All Focal products benefit from innovations which result from the on-going research in the field of acoustics. This technological heritage, protected by numerous patents, ensures a sound which is clear, powerful and true to nature; for providing the best audio systems in each category.

The love for music combined with the passion for cars spawned Focal's Car Audio collections in the 1990s. These car audio systems and kits are designed to enable car enthusiasts to enhance their driving experience with audiophile sound. From the most prestigious customised installations to easy-to-install kits, every solution is optimised for your vehicle. Our technology is packed with the best innovations and materials to enhance your audio environment, and to make your journey a moment of intense pleasure.

Our collection of audio solutions is adapted to all styles and all uses:

- **Elite:** on-board audio perfection: get the highest musical quality for your car thanks to these customised installations capable of exceptional performance.
- **Performance:** treat yourself to powerful and demonstrative sound through a sound system which reflects who you are.
- **Integration:** discreet and easy to install, a simple way to improve your vehicle's acoustics without altering the factory system.

Innovation and performance, the highest levels of expertise and pleasure are the brand's values. They define Focal's signature, whose unique goal is to take you beyond sound.

# ELITE

## 'Haute couture' sound

Is your car a gem bespoke to you? Is ultimate sound quality never far from your thoughts?

If so, then Elite is for you: The Focal name is synonymous with unique, hand-made equipment to help you achieve the absolute performance from your music. Based on rare, precious metals, this range uses the very latest technologies, strong in the heritage of the Grande Utopia EM, currently considered as one of the best loudspeakers in the world. Made in France, these dream products, available in **Utopia and K2 Power lines**, are the natural choice for bespoke installations implemented exclusively for you by our expert installers.

# D1

UTOPIA  
'À la carte' concept ..... 9

# D2

K2 POWER  
More than products,  
a lifestyle! ..... 20







# UTOPIA

Patent n° WO2017/103360A1



HANDCRAFTED  
IN FRANCE

## 'À la carte' concept

For years the Utopia range has been a myth for all music and car lovers. It has become a benchmark thanks to our unique technologies.

With our rich history and strong DNA, we set ourselves a huge challenge: to renew the range and establish a new reference of high-end drivers in the market.

And thus Utopia M was born, the quintessence of our expertise and our latest patented technologies.

Utopia M is an innovative, 'à la carte' concept, that lets you build your own bespoke system depending on your vehicle, the only limit being your creativity and that of the installer fitting it.

When devising its unique design, a mix of tradition and innovation, our designers drew on the codes and richness of French architecture.

This work was possible thanks to the development of our patented 'M'-profile 'W' sandwich cone, which pushes the boundaries by perfectly combining the 3 criteria essential for creating the ideal driver: rigidity/lightness/damping.

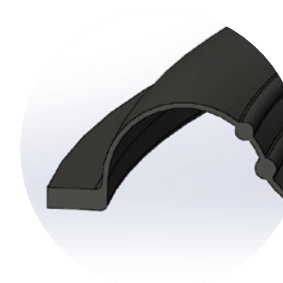
In combination with our patented TMD® surround, distortion is reduced, thus increasing the precision and realism of the midrange.

Our Beryllium tweeter also benefits from these innovations and includes an 'M'-shape inverted dome combined with our TMD® surround, which provides a striking level of detail.

With Utopia M, the legend continues...



> 'M'-profile 'W' sandwich cone



> TMD® (Tuned Mass Damper)



> Red neodymium motor



> 'M'-shape Beryllium dome and TMD®





ELITE **UTOPIA M** Tweeter - 'À la carte' concept

**TBM**

Pair of tweeters  
'M'-shape pure Beryllium dome  
Voice-coil diameter: 1" (25mm)  
Motor: Neodymium  
Surround: Tuned Mass Damper (TMD®)  
Max. power: 200W  
Nom. power: 20W RMS  
Sensitivity (2.83V/1m): 95dB  
Frequency response: 15kHz - 40kHz  
Impedance: 4Ω  
Other: Fixed grille, built-in  
Supplied mounting bracket





# ELITE UTOPIA M

6" Woofer and 3.5" Midrange - 'À la carte' concept

## 6 WM

Pair of woofers  
Diameter: 6 1/2" (165mm)  
'M'-profile 'W' cone  
Voice coil: 3 5/32" (80mm)  
Motor: Neodymium  
Surround: Tuned Mass Damper (TMD®)  
Max. power: 200W  
Nom. power: 100W RMS  
Sensitivity (2.83V/1m): 91.5dB  
Frequency response: 60Hz - 6kHz  
Impedance: 4Ω  
Accessories: Optional grille



## 3.5 WM

Midrange  
Diameter: 3.5" (87.5mm)  
'M'-profile 'W' cone  
Voice coil diameter: 1 49/64" (45mm)  
Motor: Neodymium  
Surround: Tuned Mass Damper (TMD®)  
Max. power: 100W  
Nom. power: 50W RMS  
Sensitivity (2.83V/1m): 88dB  
Frequency response: 200Hz - 10kHz  
Impedance: 4Ω  
Accessories: Optional grille



## 6" grille

'M'-shape design  
Aluminium ring  
Sold separately by unit



## 3.5" grille

'M'-shape design  
Aluminium ring  
Sold separately by unit





ELITE **UTOPIA M**

8" Woofer - 'À la carte' concept

**8 WM**

Woofer  
Diameter: 8" (200mm)  
'M'-profile 'W' cone  
Voice coil: 3<sup>5/32"</sup> (80mm)  
Motor: Neodymium  
Surround: Tuned Mass Damper (TMD®)  
Max. power: 200W  
Nom. power: 100W RMS  
Sensitivity (2.83V/1m): 91.8dB  
Frequency response: 45Hz - 5kHz  
Impedance : 4Ω  
Accessories : Optional grille



**8" grille**

'M'-shape design  
Aluminium ring  
  
Sold separately by unit







## ELITE UTOPIA M

10" Subwoofer - 'À la carte' concept

### SUB 10 WM

Subwoofer  
Diameter: 10" (250mm)  
Mounting depth: 4 1/4" (108mm)  
'M'-profile 'W' cone  
Dual voice coil diameter: 4 23/32" (120mm)  
Motor: Neodymium  
Max. power: 800W  
Nom. power: 400W RMS  
Sensitivity (2.83V/3ft): 87.5dB  
Frequency response: 25Hz - 800Hz  
Impedance: 2 x 4Ω

Suggested load volume:  
0.35 cu ft (10l) in sealed enclosure





ELITE UTOPIA

2-way component kit



Utopia wouldn't be Utopia without this new 165W-XP kit. An evolution of one of our most iconic products, it opens the door to this world and its exceptional performance. It integrates our latest technologies such as the TMD® surround, a progressive spider and a new, pure Beryllium inverted dome tweeter.



165W-XP Passive

2-way component kit  
Diameter: 6 1/2" (165mm)  
Composite "W" sandwich cone  
Voice-coil diameter: 1 1/4" (32mm)  
Pure Beryllium inverted dome tweeter  
Crossover: 12/18dB bi-amp  
Adjustable tweeter level: +3; 0dB/oct  
Max. power: 200W  
Nom. power: 100W RMS  
Sensitivity (2.83V/1m): 93dB  
Frequency response: 60Hz - 40kHz  
Impedance: 2Ω  
Accessories: Grilles included

ELITE UTOPIA

Ultima Kit

A unique sensation in the world, experience the Grande Utopia EM in your car. Ultima is a full active car audio kit designed and inspired by the best drivers used in our high-end loudspeakers.

TW Ultima

Diameter: 2 5/8" (75mm)  
Pure Beryllium inverted dome  
Motor: Neodymium IAL2 motor  
Max. power: 200W (with filtering)  
Nom. power: 50W RMS (with filtering)  
Sensitivity (2.83V/1m): 93dB  
Impedance: 6Ω  
Frequency Response: 500Hz to 40kHz

Suggested load volume:  
0.01 cu ft (0.3l) in sealed enclosure



6 W Ultima

Diameter: 6 1/2" (165mm)  
"W" composite sandwich cone  
Voice-coil diameter: 1 9/16" (40mm)  
Motor: Power Flower multi ferrite  
Max. power: 240W  
Nom. power: 120W RMS  
Sensitivity (2.83V/1m): 90.5dB  
Impedance: 4Ω  
Frequency Response: 60Hz to 4.5kHz  
Accessory: Aluminum engraved ring

Suggested load volume:  
1 cu ft (30l) in sealed enclosure



8 W Ultima

Diameter: 8" (200mm)  
"W" composite sandwich cone  
Voice-coil: 2" (50mm)  
Motor: Dual ferrite  
Max. power: 600W  
Nom. power: 300W RMS  
Sensitivity (2.83V/1m): 90.2dB  
Impedance: 6Ω  
Frequency Response: 40Hz to 120Hz

Suggested load volume for 1 subwoofer:  
0.79 cu ft (22.5l) in ported enclosure  
Port size suggested:  
6 1/8" x Ø2 3/8" (17cm x Ø6cm)



Full active Ultima kit\* in its wood Black Satin case.  
Included authenticity certificate, user manual, Focal tool CD  
for settings.

Composition of the kit:  
2xTweeters,  
2xMidbass,  
2xSubwoofers

\* Within the limit of available product stock.



# K2 POWER

HANDCRAFTED  
IN FRANCE

More than products, a lifestyle!

Besides its distinct yellow colour, the K2 Power line has become a lifestyle object in its own right worldwide. Once more, our engineers have pushed back the limits of performance to continue making the reputation of this extraordinary line synonymous with power and precision!

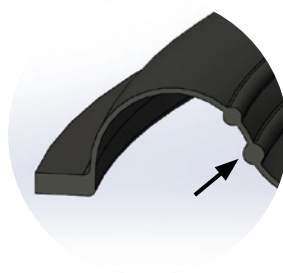
The K2 Power's composite sandwich cone combines three key features: rigidity, lightness and damping. This unique expertise 'Made in Focal' combines a new patented TMD® (Tuned Mass Damper) rubber surround which controls unwanted resonances to provide a clean and neutral midrange with very low harmonic distortion.

The ventilated voice-coil gap keeps the temperature of the voice-coil low and stable for increased power handling and reliability. The subwoofers have been designed to work in very compact volumes while having a very high SPL and an amazing energy!

Finally, the major innovation of this line made in France is the 'M' profile aramidfibre inverted dome tweeter. This totally exclusive 'M' profile inverted dome tweeter has been specifically designed to increase precision in the very high frequencies. The push-pull motor inspired by the IAL technology dampens acoustic resonances on the back of the membrane and extends the low end of the frequency response, in a very compact housing.



> K2 Power sandwich cone



> TMD®  
(Tuned Mass Damper)



> Ventilated voice coil  
cooling system



> 'M' profile inverted  
dome tweeter





EC 165 K

2-way coaxial kit  
Diameter: 6 1/2" (165mm)  
K2 composite sandwich cone  
Voice-coil diameter: 1" (25mm)  
Voice-coil height: 0 9/16" (15mm)  
Motor: Ferrite  
Tweeter: TKM ('M' profile aramid-fibre inverted dome)  
Surround: Tuned Mass Damper (TMD)  
Max. power: 160W  
Nom. power: 80W RMS  
Sensitivity (2.83V/1m): 93dB  
Frequency response: 60Hz-22kHz  
Impedance: 4Ω  
Supplied with grille



ES 100 K

2-way component kit  
Diameter: 4" (100mm)  
K2 composite sandwich cone  
Voice-coil diameter: 0 3/16" (20mm)  
Voice-coil height: 0 1/3" (8.5mm)  
Motor: Neodymium  
Tweeter: TKM ('M' profile aramid-fibre inverted dome)  
Surround: Tuned Mass Damper (TMD)  
Separated crossover: 12/12dB (3.5kHz)  
Tweeter adjustable level: +3; 0; -3dB  
Max. power: 120W  
Nom. power: 60W RMS  
Sensitivity (2.83V/1m): 90dB  
Frequency response: 110Hz-22kHz  
Impedance: 4Ω  
Supplied with grille



ES 130 K

2-way component kit  
Diameter: 5" (130mm)  
K2 composite sandwich cone  
Voice-coil diameter: 1" (25mm)  
Voice-coil height: 0 1/2" (12mm)  
Motor: Ferrite  
Tweeter: TKM ('M' profile aramid-fibre inverted dome)  
Surround: Tuned Mass Damper (TMD)  
Separated crossover: 6-12/12dB (3.5kHz)  
Tweeter adjustable level: +3; 0; -3dB  
Max. power: 160W  
Nom. power: 80W RMS  
Sensitivity (2.83V/1m): 90dB  
Frequency response: 65Hz-22kHz  
Impedance: 4Ω  
Supplied with grille



ES 165 K

2-way component kit  
Diameter: 6 1/2" (165mm)  
K2 composite sandwich cone  
Voice-coil diameter: 1 1/4" (32mm)  
Voice-coil height: 0 9/16" (15mm)  
Motor: Ferrite  
Tweeter: TKM ('M' profile aramid-fibre inverted dome)  
Surround: Tuned Mass Damper (TMD)  
Separated crossover: 6-12/12dB (3kHz)  
Tweeter adjustable level: +3; 0; -3dB  
Max. power: 200W  
Nom. power: 100W RMS  
Sensitivity (2.83V/1m): 90.8dB  
Frequency response: 60Hz-22kHz  
Impedance: 4Ω  
Supplied with grille



ES 165 K2

2-way component kit  
Diameter: 6 1/2" (165mm)  
K2 composite sandwich cone  
Voice-coil diameter: 1 1/4" (32mm)  
Voice-coil height: 0 5/8" (15.5mm)  
Motor: Ferrite  
Tweeter: TKM ('M' profile aramid-fibre inverted dome)  
Surround: Tuned Mass Damper (TMD)  
Separated crossover: 6-12/12dB (3.5kHz)  
Tweeter adjustable level: +3; 0; -3dB  
Max. power: 200W  
Nom. power: 100W RMS  
Sensitivity (2.83V/1m): 92.8dB  
Frequency response: 60Hz-22kHz  
Impedance: 2Ω  
Supplied with grille



ES 165 KX2

2-way component kit  
Diameter: 6 1/2" (165mm)  
K2 composite sandwich cone  
Voice-coil diameter: 1 9/16" (40mm)  
Voice-coil height: 0 2/3" (16.5mm)  
Motor: Ferrite  
Tweeter: TKMX ('M' profile aramid-fibre inverted dome)  
Surround: Tuned Mass Damper (TMD)  
Separated crossover: 6-12/12-18dB (3kHz)  
Tweeter adjustable level: +3; 0; -3dB  
Max. power: 240W  
Nom. power: 120W RMS  
Sensitivity (2.83V/1m): 92.5dB  
Frequency response: 55Hz-22kHz  
Impedance: 2Ω  
Supplied with grille



ES 165 KX3

3-way component kit  
Diameter: 6 1/2" (165mm)  
K2 composite sandwich cone  
Voice-coil diameter: 1 9/16" (40mm)  
Voice-coil height: 0 2/3" (16.5mm)  
Motor: Ferrite  
Tweeter: TKMX ('M' profile aramid-fibre inverted dome)  
Surround: Tuned Mass Damper (TMD)  
Separated crossover: 6-12/12/12dB (3/4/500Hz/3.5kHz)  
Tweeter adjustable level: +3; 0; -3dB  
Max. power: 240W  
Nom. power: 120W RMS  
Sensitivity (2.83V/1m): 93dB  
Frequency response: 45Hz-22kHz  
Impedance: 4Ω  
Supplied with grille



E 25 KX

Subwoofer  
Diameter: 10" (250mm)  
K2 composite sandwich cone  
Mounting depth: 6 49/64" (172mm)  
Voice-coil diameter: 2 9/16" (65mm)  
Voice-coil height: 2 3/16" (55mm)  
Motor: Dual ferrite  
Max. power: 1200W  
Nom. power: 600W RMS  
Sensitivity (2.83V/1m): 84.5dB  
Frequency response: 25Hz-500Hz  
Impedance: dual 4Ω



E 30 KX

Subwoofer  
Diameter: 12" (300mm)  
K2 composite sandwich cone  
Mounting depth: 6 49/64" (172mm)  
Voice-coil diameter: 2 9/16" (65mm)  
Voice-coil height: 2 3/16" (55mm)  
Motor: Dual ferrite  
Max. power: 1600W  
Nom. power: 800W RMS  
Sensitivity (2.83V/1m): 86.5dB  
Frequency response: 25Hz-500Hz  
Impedance: dual 4Ω





# ELECTRONICS

Are you looking to enjoy the sensations of astonishingly precise and powerful car audio which is perfectly controlled and stable in your vehicle?

Focal's range of electronic products will enhance your car audio system so you can get the most out of your music while at the wheel. They will enable you to create a sound processing system with all the electronics you need to satisfy your desires. Create exactly the right set-up you're looking for, in confined or adequate spaces: the system can be optimised using a **digital signal processor** and one or more **amplifiers**. Thanks to our ranges of FPX and FDS amplifiers, and to our FSP-8 sound processor, you'll immediately find the perfect balance of power and audio quality.

These electronic products will give you the best results with our **Elite** and **Performance** ranges.

## AMPLIFIERS

### Huge power, compactness, efficiency

The FPX range combines the best of modern amplification technologies to provide high performances and musical precision: the Premium understanding by FOCAL!



### FPX 5.1200

Class D amplifier - 5 channels  
CEA Power (4 $\Omega$ ): 4x75W RMS + 1x420W RMS  
Power max (2 $\Omega$ ): 4x120W RMS + 1x720W RMS  
Configurable Crossovers High-Pass/Low-Pass: 50Hz - 500Hz  
Copy Mode (6CH/4CH/2CH)  
Full range Mode  
Bass Boost  
Subsonic filter  
Adjustable Phase  
Protections: Short circuit/over-current/reverse polarity/DC/voltage drop/heat protection  
Dimensions (LxHxW): 11<sup>13</sup>/<sub>16</sub>"x6<sup>5</sup>/<sub>16</sub>"x2<sup>1</sup>/<sub>4</sub>" (300x175x57mm)  
Weight: 9.038 lbs (4.1Kg)  
Remote control included





FPX 4.400 SQ  
"The Sound Quality amplifier of the range"

Class AB amplifier - 4/3/2 channels  
CEA power (4Ω): 4x70W RMS  
Max. power (2Ω): 4x100W RMS  
Max. power (4Ω bridged): 2x200W RMS  
Configurable Crossovers High-Pass/Low-Pass:  
50Hz-5000Hz  
Copy Mode (4CH/2CH)  
Full range Mode  
Protections: Short circuit/over-current/reverse polarity/  
DC/voltage drop/heat protection  
Dimensions: 12<sup>23/64"</sup>x6<sup>53/64"</sup>x2<sup>1/4"</sup> (314x175x57mm)  
Weight: 8.16lbs (3.7kg)

FPX 2.750\*  
Class D amplifier - 2 channels/mono  
CEA power (4Ω): 2x220W RMS  
Max. power (2Ω): 2x385W RMS  
Max. power (4Ω bridged): 1x770W RMS  
Configurable Crossovers High-Pass/Low-Pass:  
50Hz-500Hz  
Full range Mode  
Protections: Short circuit/over-current/reverse polarity/  
DC/voltage drop/heat protection  
Dimensions: 9<sup>21/64"</sup>x5<sup>13/64"</sup>x2<sup>3/32"</sup> (237x132x53mm)  
Weight: 4.40lbs (2kg)

FDS 4.350  
Class D amplifier - 4/3/2 channels  
RCA low-level inputs  
CEA power (4Ω): 4x58W RMS  
Max. power (2Ω): 4x100W RMS  
Max. power (4Ω bridged): 2x200W RMS  
Configurable high-pass/low-pass crossover:  
40Hz-400Hz  
Full range mode  
Protections: Short-circuit/low impedance/reversal of  
polarity/DC/power drop/overheating protection  
Dimensions (DxWxH): 7<sup>13/16"</sup>x1<sup>11/16"</sup>x4<sup>1/4"</sup> (199x43x108mm)  
Weight: 1.8lbs (850g)

FDS 1.350  
Class D amplifier with dual output - Mono  
RCA low-level inputs  
CEA power (4Ω): 1x210W RMS  
Max. power (2Ω): 1x350W RMS  
Low-pass crossover: 40Hz-400Hz  
Progressive phase adjustment (0-180°)  
Bass boost (0/6dB/12dB)  
Protections: Short-circuit/low impedance/reversal of  
polarity/DC/power drop/overheating protection  
Dimensions (DxWxH):  
7<sup>13/16"</sup>x1<sup>11/16"</sup>x4<sup>1/4"</sup> (199x43x108mm)  
Weight: 1.8lbs (850g)

FPX 4.800  
Class D amplifier - 4/3/2 channels  
CEA power (4Ω): 4x120W RMS  
Max. power (2Ω): 4x185W RMS  
Max. power (4Ω bridged): 2x370W RMS  
Configurable Crossovers High-Pass/Low-Pass:  
50Hz-500Hz  
Copy Mode (4CH/2CH)  
Full range Mode  
Protections: Short circuit/over-current/reverse  
polarity/DC/voltage drop/heat protection  
Dimensions: 9<sup>21/64"</sup>x5<sup>13/64"</sup>x2<sup>3/32"</sup> (237x132x53mm)  
Weight: 4.40lbs (2kg)

FPX 1.1000  
Class D amplifier - Mono  
CEA power (4Ω): 1x420W RMS  
Max. power (2Ω): 1x700W RMS  
Max. power (1Ω): 1x1000W RMS  
Configurable Low-Pass Crossover: 50Hz-250Hz  
Bass Boost - Progressive Phase - Subsonic  
Protections: Short circuit/over-current/reverse  
polarity/DC/voltage drop/heat protection  
Dimensions: 11<sup>11/16"</sup>x5<sup>13/64"</sup>x2<sup>3/32"</sup> (297x132x53mm)  
Weight: 5.62lbs (2.55kg)

FDS 2.350\*  
Stereo Class D bridgeable amplifier  
RCA low-level inputs  
CEA power (4Ω): 2x105W RMS  
Max. power (2Ω): 2x170W RMS  
Max. power (4Ω bridged): 1x360W RMS  
Configurable high-pass/low-pass crossover:  
40Hz-400Hz  
Full range mode  
Bass boost (0-12dB)  
Protections: Short-circuit/low impedance/  
reversal of polarity/DC/power drop/overheating  
protection  
Dimensions (DxWxH):  
7<sup>13/16"</sup>x1<sup>11/16"</sup>x4<sup>1/4"</sup> (199x43x108mm)  
Weight: 1.8lbs (850g)

\* Within the limit of available product stock.



FSP-8  
8-channel sound processor  
Selectable high/low-level inputs for compatibility  
with factory or after-market head units  
High-resolution digital input (24 bits/192kHz)  
Auxiliary stereo input  
Remote control with LED screen (sold separately)  
Dimensions (LxHxW): 5<sup>5/16"</sup>x8<sup>9/16"</sup>x1<sup>7/8"</sup> (135x218x48mm)  
Audio specifications  
Max output (with 10 kΩ): 3.4V  
Frequency response (digital crossover off/-3 dB): 5Hz- 21kHz  
Signal/noise ratio: -90dBA (analog input)/-99dBA (optical)  
Distortion - 10 kΩ - @ 1kHz (with 22kHz low-pass filter): 0.02%



FSP-8 remote control  
Enables you to control the main functions of the FSP-8:  
Adjust overall gain, subwoofer volume, and input selection for  
the FSP-8  
Reminds you of the stored pre-sets  
Notched knob  
LED backlit screen  
Dimensions (LxHxW): 1<sup>1/2"</sup>x4<sup>5/16"</sup>x1<sup>1/4"</sup> (38x110x31.3mm)



Manager Focal FSP-8 software  
PC compatibility: Windows XP/Vista/Seven/8/10  
Simplified set-up and dynamic help  
Equaliser: 10 bands, fully customisable for every single channel  
High-pass/low-pass filter/bandpass control: 16Hz - 20kHz  
Delay adjustment range: 0-22ms per channel  
Delay adjustment incrementation: 0.1ms  
Phase inverter



# PERFORMANCE

## Create your sound

Are you passionate about your beautiful powerful car? Do you want to create a sound system that reflects who you are?

The Performance range, innovative and dynamic, delivers sound to make your spine tingle. Ultra-technical and assertively designed, Performance was conceived to bring extreme sensations. If the traditional **Access** line marks the entry-point to this technology universe, you can push the limits of your creativity to their very peaks with the **Expert** range. The young generation will also find with the **Auditor** line the Focal sound expertise at a very affordable budget. Power and fidelity work hand in hand: 'live' sound in all its dimensions for the most demanding music lovers.



# D01

## EXPERT

Live sound in all its dimension..... 32

# D02

## ACCESS

More than a name,  
a compelling story ..... 36

# D03

## AUDITOR

Your first installation  
with Focal sound..... 38



# FLAX

Patent n° WO2014/106713A1

HANDCRAFTED  
IN FRANCE

## Perfect balance for high dynamic

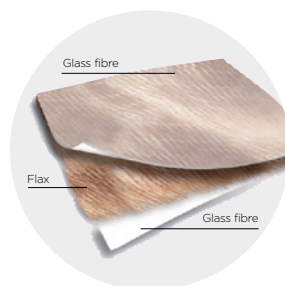
Over the last years, there have been many innovations regarding the materials used. The return to natural materials and their combination with modern composites has resulted in the creation of new kinds of modern hybrids.

The 'Sandwich' technology which we master perfectly with the K2 and 'W' cones is the best way to achieve a perfect balance between rigidity/weight/damping.

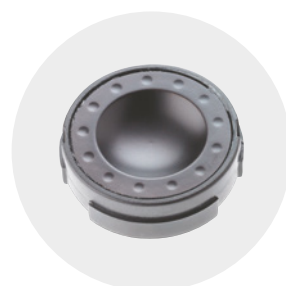
The key to success for a speaker cone made by Focal lies in the satisfaction of these conflicting criteria.

When it came down to the delicate choice regarding the design of the core of the sandwich structure, our engineers were soon impressed by the characteristics particular to Flax. After five years of research, the Flax sandwich cone was born. The use of an ecological textile such as flax, combined with our composite technology has led to an innovative solution for manufacturing sandwich structures: very high-quality flax fibres between two sheets of glass fibres. French flax is considered the best in the world, and another important detail is that the manufacturing process can be mechanised and automated.

The high-end products of our Expert line are the result of our constant efforts to differentiate ourselves and our goal to provide ultimate acoustic reproduction, featuring six Performance kits: the 'F' series.



> FLAX sandwich cone



> Aluminum/Magnesium inverted dome tweeter



> Aluminum basket





PS 130 F

2-way component kit  
Diameter: 5" (130mm)  
Flax sandwich cone  
Mounting depth: 2 7/16" (61.5mm)  
Voice-coil diameter: 1" (25mm)  
Voice-coil height: 0 3/8" (10mm)  
Magnet: 3 1/3" (85mm)  
Processed Aluminum/Magnesium inverted dome tweeter  
Separated crossover: 12-12dB/Oct  
Adjustable tweeter level: 0; -3dB/Oct  
Max. power: 120W  
Nom. power: 60W RMS  
Sensitivity (2.83V/1m): 90.4dB  
Frequency response: 75Hz-28kHz  
Supplied with grille



PS 165 F

2-way component kit  
Diameter: 6 1/2" (165mm)  
Flax sandwich cone  
Mounting depth: 2 7/8" (72.5mm)  
Voice-coil diameter: 1" (25mm)  
Voice-coil height: 0 9/16" (15mm)  
Magnet: 3 1/3" (85mm)  
Processed Aluminum/Magnesium inverted dome tweeter  
Separated crossover: 12-12dB/Oct  
Adjustable tweeter level: 0; -3dB/Oct  
Max. power: 140W  
Nom. power: 70W RMS  
Sensitivity (2.83V/1m): 91.6dB  
Frequency response: 60Hz-28kHz  
Supplied with grille



PS 165 FX

2-way component kit  
Diameter: 6 1/2" (165mm)  
Flax sandwich cone  
Mounting depth: 3 1/16" (77mm)  
Voice-coil diameter: 1 1/4" (32mm)  
Voice-coil height: 0 9/16" (15mm)  
Magnet: 3 9/16" (90mm)  
Processed Aluminum/Magnesium inverted dome tweeter  
Separated crossover: 12-18dB/Oct  
Adjustable tweeters level: 0; -3dB/Oct  
Max. power: 160W  
Nom. power: 80W RMS  
Sensitivity (2.83V/1m): 91.3dB  
Frequency response: 55Hz-28kHz  
Supplied with grille



PS 165 F3

3-way component kit  
Woofer diameter: 6 1/2" (165mm)  
Flax sandwich cone  
Midrange diameter: 3" (80mm)  
Woofer mounting depth: 3 1/16" (77mm)  
Midrange mounting depth: 1 5/16" (33.5mm)  
Magnet: 3 9/16" (90mm)  
Processed Aluminum/Magnesium inverted dome tweeter  
Separated crossover: 12-18dB/Oct  
Adjustable tweeters level: 0; -3dB/Oct  
Adjustable midranges level: HI-MID/Flat  
Max. power: 160W  
Nom. power: 80W RMS  
Sensitivity (2.83V/1m): 90.7dB  
Frequency response: 55Hz-28kHz  
Supplied with grille



PC 130 F

2-way coaxial kit  
Diameter: 5" (130mm)  
Flax sandwich cone  
Mounting depth: 2 1/3" (59.2mm)  
Voice-coil diameter: 1" (25mm)  
Voice-coil height: 0 3/8" (10mm)  
Motor: Ferrite  
Processed Aluminum/Magnesium inverted dome tweeter  
Integrated crossover: 6dB/oct  
Max. power: 120W  
Nom. power: 60W RMS  
Sensitivity (2.83V/1m): 90.5dB  
Frequency response: 75Hz-28kHz  
Impedance: 4Ω  
Supplied with grille



PC 165 F

2-way coaxial kit  
Diameter: 6 1/2" (165mm)  
Flax sandwich cone  
Mounting depth: 2 7/8" (72.50mm)  
Voice-coil diameter: 1" (25mm)  
Voice-coil height: 0 1/2" (13mm)  
Motor: Ferrite  
Processed Aluminum/Magnesium inverted dome tweeter  
Integrated crossover: 6dB/oct  
Max. power: 140W  
Nom. power: 70W RMS  
Sensitivity (2.83V/1m): 91.9dB  
Frequency response: 60Hz-28kHz  
Impedance: 4Ω  
Supplied with grille

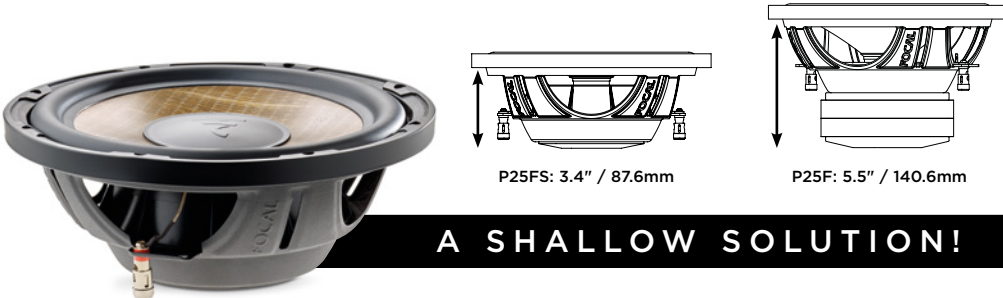


Easy integration, compactness and performances

We developed this Flax shallow subwoofer to answer the new trend of the market: discrete integration in small space as trunk or underseat location in pick up without compromise on the performances.

P 25 FS

Shallow subwoofer  
Diameter : 10" (250mm)  
Flax sandwich cone  
Mounting depth: 3 29/64" (87.6mm)  
Voice-coil diameter: 1 1/2" (38mm)  
Sealed enclosure:  
0.42 to 0.64 cu ft (12 to 18l)  
Motor : Dual ferrite  
Max. power: 560W  
Nom. power: 280 WRMS  
Sensitivity (2.83V/1m): 87dB  
Frequency response: 35Hz-400Hz





P 20 F

Subwoofer  
Diameter: 8" (200mm)  
Flax sandwich cone  
Mounting depth: 4<sup>59/64"</sup> (117mm)  
Single voice-coil: 1<sup>1/2"</sup> (Ø38mm), 4Ω  
Sealed enclosure: 0.35 to 0.53 cu ft (10 to 15l)  
Ported enclosure: 0.35 to 0.70 cu ft (10 to 20l)  
Double ferrite magnet: 4<sup>3/16"</sup> (120mm)  
Max. power: 500W  
Nom. power: 250W RMS  
Sensitivity (2.83V/1m): 82.5dB  
Frequency response: 39Hz-500Hz



P 25 F

Subwoofer  
Diameter: 10" (250mm)  
Flax sandwich cone  
Mounting depth: 5<sup>17/32"</sup> (140.6mm)  
Single voice-coil: 2" (Ø50mm), 4Ω  
Sealed enclosure: 0.35 to 0.88 cu ft (10 to 25l)  
Ported enclosure: 0.88 to 1.20 cu ft (25 to 35l)  
Double ferrite magnet: 5<sup>11/16"</sup> (145mm)  
Max. power: 600W  
Nom. power: 300W RMS  
Sensitivity (2.83V/1m): 85dB  
Frequency response: 33Hz-500Hz



P 30 F

Subwoofer  
Diameter: 12" (300mm)  
Flax sandwich cone  
Mounting depth: 6<sup>5/16"</sup> (160.5mm)  
Single voice-coil: 2" (Ø50mm), 4Ω  
Sealed enclosure: 1.06 to 1.40 cu ft (30 to 40l)  
Ported enclosure: 1.4 to 2.10 cu ft (40 to 60l)  
Double ferrite magnet: 5<sup>11/16"</sup> (145mm)  
Max. power: 800W  
Nom. power: 400W RMS  
Sensitivity (2.83V/1m): 86.7dB  
Frequency response: 27Hz-500Hz



PSB 200

Compact passive subwoofer enclosure  
Sealed technology  
Subwoofer: 8" (200mm)  
Dimensions (LxHxW): 19<sup>1/4"</sup> x 4<sup>19/64"</sup> x 11<sup>31/32"</sup>  
(489 x 109 x 304mm)  
Weight: 7kg (15.4lbs)  
Impedance: 4Ω  
Max. power: 250W  
Nom. power: 150W RMS  
Sensitivity (2.83V/1m): 83dB  
Frequency response: 45Hz-150Hz  
Accessories: screws, fixation system

NEW



PS 165 V1

2-way component kit  
Diameter: 6<sup>1/2"</sup> (165mm)  
Polyglass cone  
Mounting depth: 2<sup>9/16"</sup> (65.5mm)  
Voice-coil diameter: 1" (25mm)  
Voice-coil height: 0<sup>7/16"</sup> (11.5mm)  
Magnet: 3<sup>1/32"</sup> (85mm)  
Processed Aluminum inverted dome tweeter  
Separated crossover: 0; -3; -6dB  
Max. power: 160W  
Nom. power: 80W RMS  
Sensitivity (2.83V/1m): 92.5dB  
Frequency response: 60Hz-20kHz  
Supplied with grille



Sub P 25 DB

Diameter: 10" (250mm)  
Polypropylene cone  
Mounting depth: 5<sup>29/64"</sup> (138.6mm)  
Dual voice-coil  
Voice-coil diameter: 2" (50mm)  
Voice-coil height: 1" (25mm)  
Magnet: 5<sup>11/16"</sup> (145mm)  
Max. power: 500W  
Nom. power: 250W RMS  
Sensitivity (2.83V/1m): 90.9dB  
Frequency response: 42Hz-500Hz  
Impedance: 4Ω



Sub P 30 DB

Diameter: 12" (300mm)  
Polypropylene cone  
Mounting depth: 6<sup>5/16"</sup> (160.5mm)  
Dual voice-coil  
Voice-coil diameter: 2<sup>3/8"</sup> (60mm)  
Voice-coil height: 1<sup>1/8"</sup> (28mm)  
Magnet: 5<sup>11/16"</sup> (145mm)  
Max. power: 600W  
Nom. power: 300W RMS  
Sensitivity (2.83V/1m): 93.4dB  
Frequency response: 27Hz-500Hz  
Impedance: 4Ω



PC 100

2-way coaxial kit  
Diameter: 4" (100mm)  
Polyglass cone  
Mounting depth: 2" (51.5mm)  
Voice-coil diameter: 1" (25mm)  
Voice-coil height: 0<sup>3/8"</sup> (9.5mm)  
Magnet: 2<sup>3/16"</sup> (72mm)  
Processed Aluminum inverted dome rotating tweeter  
Integrated crossover: 6dB/oct  
Max. power: 100W  
Nom. power: 50W RMS  
Sensitivity (2.83V/1m): 90.9dB  
Impedance: 4Ω  
Frequency response: 100Hz-20kHz  
Supplied with grille



PC 130

2-way coaxial kit  
Diameter: 5" (130mm)  
Polyglass cone  
Mounting depth: 2<sup>1/4"</sup> (56.5mm)  
Voice-coil diameter: 1" (25mm)  
Voice-coil height: 0<sup>7/16"</sup> (11mm)  
Magnet: 3<sup>1/32"</sup> (80mm)  
Processed Aluminum inverted dome rotating tweeter  
Integrated crossover: 6dB/oct  
Max. power: 120W  
Nom. power: 60W RMS  
Sensitivity (2.83V/1m): 91.6dB  
Impedance: 4Ω  
Frequency response: 80Hz-20kHz  
Supplied with grille



PC 165

2-way coaxial kit  
Diameter: 6<sup>1/2"</sup> (165mm)  
Polyglass cone  
Mounting depth: 2<sup>9/16"</sup> (65.5mm)  
Voice-coil diameter: 1" (25mm)  
Voice-coil height: 0<sup>7/16"</sup> (11mm)  
Magnet: 3<sup>1/8"</sup> (80mm)  
Processed Aluminum inverted dome rotating tweeter  
Integrated crossover: 6dB/oct  
Max. power: 160W  
Nom. power: 80W RMS  
Sensitivity (2.83V/1m): 93.6dB  
Impedance: 4Ω  
Frequency response: 60Hz-20kHz  
Supplied with grille





PERFORMANCE ACCESS

2 and 3-way component kits

130 AS

2-way component kit  
Diameter: 5" (130mm)  
DFS® cone (Dual Fiberglass Structure)  
Mounting depth: 2 1/8" (54.7mm)  
Voice-coil diameter: 1" (25mm)  
Voice-coil height: 0 7/16" (11mm)  
Magnet: 3 1/32" (85mm)  
Aluminum inverted dome tweeter  
Adjustable tweeter level: 3 positions (-3/0/+3dB)  
Separated crossover: 12/12dB/oct (5kHz)  
Max. power: 100W  
Nom. power: 50W RMS  
Sensitivity (2.83V/1m): 90dB  
Frequency response: 65Hz-20kHz  
Supplied with grille



165 AS

2-way component kit  
Diameter: 6 1/2" (165mm)  
DFS® cone (Dual Fiberglass Structure)  
Mounting depth: 2 1/2" (62.9mm)  
Voice-coil diameter: 1" (25mm)  
Voice-coil height: 0 7/16" (11mm)  
Magnet: 3 1/32" (85mm)  
Aluminum inverted dome tweeter  
Adjustable tweeter level: 3 positions (-3/0/+3dB)  
Separated crossover: 12/12dB/oct (5kHz)  
Max. power: 120W  
Nom. power: 60W RMS  
Sensitivity (2.83V/1m): 91.3dB  
Frequency response: 60Hz-20kHz  
Supplied with grille



165 AS3

3-way component kit  
Woofer diameter: 6 1/2" (165mm)  
DFS® cone (Dual Fiberglass Structure)  
Midrange diameter: 3" (80mm)  
Woofer mounting depth: 2 1/2" (62.9mm)  
Midrange mounting depth: 1 2/3" (42.5mm)  
Voice-coil diameter: 1" (25mm)  
Voice-coil height: 0 9/16" (15mm)  
Magnet: 3 1/32" (85mm)  
Aluminum inverted dome tweeter  
Separated crossover: 6/12dB/oct (5kHz)  
Adjustable Tweeter level: 3 positions (-3/0/+3dB)  
Max. power: 160W  
Nom. power: 80W RMS  
Sensitivity (2.83V/1m): 90dB  
Frequency response: 55Hz-20kHz  
Supplied with grille



PERFORMANCE ACCESS

Coaxial kits

100 AC

2-way coaxial kit  
Diameter: 4" (100mm)  
Mounting depth: 2 1/8" (52.2mm)  
Voice-coil diameter: 1" (25mm)  
DFS® cone (Dual Fiberglass Structure)  
Voice-coil height: 0 7/16" (11mm)  
Magnet: 2 13/16" (72mm)  
Aluminum inverted dome tweeter  
Integrated crossover: (4.7kHz) 6dB/oct  
Max. power: 80W  
Nom. power: 40W RMS  
Sensitivity (2.83V/1m): 87.2dB  
Frequency response: 70Hz-20kHz  
Supplied with grille



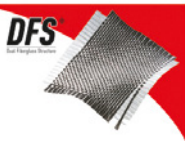
130 AC

2-way coaxial kit  
Diameter: 5" (130mm)  
Mounting depth: 2 1/8" (54.7mm)  
Voice-coil diameter: 1" (25mm)  
DFS® cone (Dual Fiberglass Structure)  
Voice-coil height: 0 7/16" (11mm)  
Magnet: 3 1/32" (85mm)  
Aluminum inverted dome tweeter  
Integrated crossover: (4.7kHz) 6dB/oct  
Max. power: 100W  
Nom. power: 50W RMS  
Sensitivity (2.83V/1m): 89.3dB  
Frequency response: 70Hz-20kHz  
Supplied with grille



165 AC

2-way coaxial kit  
Diameter: 6 1/2" (165mm)  
Mounting depth: 2 1/2" (62.9mm)  
Voice-coil diameter: 1" (25mm)  
DFS® cone (Dual Fiberglass Structure)  
Voice-coil height: 0 7/16" (11mm)  
Magnet: 3 1/32" (85mm)  
Aluminum inverted dome tweeter  
Integrated crossover: (4.7kHz) 6dB/oct  
Max. power: 120W  
Nom. power: 60W RMS  
Sensitivity (2.83V/1m): 91dB  
Frequency response: 60Hz-20kHz  
Supplied with grille



PERFORMANCE ACCESS

Coaxial kits

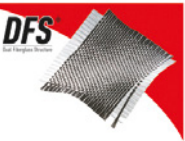
570 AC

2-way coaxial kit  
Woofer: 5x7" (130x180mm)  
DFS® cone (Dual Fiberglass Structure)  
Mounting depth: 2 11/32" (59.5mm)  
Voice-coil diameter: 1" (25mm)  
Voice-coil height: 0 7/16" (11mm)  
Magnet: 3 1/32" (85mm)  
Aluminum inverted dome tweeter  
Integrated crossover: (4.7kHz) 6dB/oct  
Max. power: 120W  
Nom. power: 60W RMS  
Sensitivity (2.83V/1m): 88.65dB  
Frequency response: 65Hz-20kHz  
Supplied without grille



690 AC

2-way coaxial kit  
Woofer: 6x9" (164x235mm)  
DFS® cone (Dual Fiberglass Structure)  
Mounting depth: 3 1/8" (81.7mm)  
Voice-coil diameter: 1 3/16" (30mm)  
Voice-coil height: 0 7/16" (11mm)  
Magnet: 3 9/16" (90mm)  
Aluminum inverted dome tweeter  
Integrated crossover: (4.7kHz) 6dB/oct  
Max. power: 150W  
Nom. power: 75W RMS  
Sensitivity (2.83V/1m): 91.3dB  
Frequency response: 50Hz-20kHz  
Supplied with grille



PERFORMANCE ACCESS

Subwoofer and bass enclosures

BOMBA BP20

Compact active subwoofer enclosure  
Class D amplifier  
High and low level audio input (OEM and after market head units compatibility)  
Bandpass technology  
Subwoofer: 8" (200mm)  
Dimensions (DxWxH): 17 5/16" x 9 13/16" x 12 11/16" (439x249x323mm)  
Max. power: 300W  
Nom. power: 150W RMS  
Phase selector: 0-180°  
Adjustable frequency cut off: 45Hz-120Hz  
Frequency response: 20Hz-125Hz



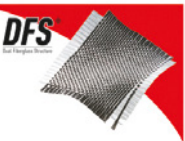
Sub 25 A4

Subwoofer  
Diameter: 10" (250mm)  
DFS® cone (Dual Fiberglass Structure)  
Mounting depth: 4 63/64" (126.6mm)  
Single voice-coil  
Voice-coil diameter: 2" (50mm)  
Voice-coil height: 1" (25mm)  
Magnet: 4 3/4" (120mm)  
Max. power: 400W  
Nom. Power: 200W RMS  
Sensitivity (2.83 V/1m): 85dB  
Frequency response: 36Hz-500Hz



Sub 30 A4

Subwoofer  
Diameter: 12" (300mm)  
DFS® cone (Dual Fiberglass Structure)  
Mounting depth: 4 49/64" (146.5mm)  
Single Voice-coil  
Voice-coil diameter: 2" (50mm)  
Voice-coil height: 1" (25mm)  
Magnet: 4 3/4" (120mm)  
Max. power: 500W  
Nom. Power: 250W RMS  
Sensitivity (2.83 V/1m): 87dB  
Frequency response: 32Hz-500Hz





As well as all Focal's Car Audio solutions, Auditor kits feature an inverted dome tweeter for a true music precision in your car!

RCX-100

2-way coaxial kit  
Diameter: 4" (100mm)  
Polypropylene cone  
1" Mylar inverted dome tweeter  
Mounting depth: 1<sup>7/8"</sup> (48.2mm)  
Voice-coil diameter: 1" (25mm)  
Magnet: 2<sup>63/64"</sup> (76mm)  
Max. power: 60W  
Nom. power: 30W RMS  
Sensitivity (2.83V/1m): 88dB  
Frequency response: 80Hz-21kHz  
Supplied with grille, fastening and screws



RCX-130

2-way coaxial kit  
Diameter: 5" (130mm)  
Polypropylene cone  
1" Mylar inverted dome tweeter  
Mounting depth: 2<sup>9/64"</sup> (54.5mm)  
Voice-coil diameter: 1" (25mm)  
Magnet: 3<sup>25/64"</sup> (86mm)  
Max. power: 100W  
Nom. power: 50W RMS  
Sensitivity (2.83V/1m): 90dB  
Frequency response: 65Hz-21kHz  
Supplied with grille, fastening and screws



RCX-165

2-way coaxial kit  
Diameter: 6<sup>1/2"</sup> (165mm)  
Polypropylene cone  
1" Mylar inverted dome tweeter  
Mounting depth: 2<sup>5/8"</sup> (66.5mm)  
Voice-coil diameter: 1" (25mm)  
Magnet: 3<sup>25/64"</sup> (86mm)  
Max. power: 120W  
Nom. power: 60W RMS  
Sensitivity (2.83V/1m): 91.5dB  
Frequency response: 60Hz-21kHz  
Supplied with grille, fastening and screws



RCX-570

2-way coaxial kit, elliptic  
Woofer: 5"x7" (130x180mm)  
Polypropylene cone  
Mounting depth: 2<sup>23/64"</sup> (60mm)  
Voice-coil diameter: 1" (25mm)  
1" Mylar inverted dome tweeter  
Magnet: 3<sup>1/3"</sup> (85mm)  
Max. power: 120W  
Nom. power: 60W RMS  
Sensitivity (2.83 V/1m): 91.6dB  
Frequency response: 60Hz-21kHz  
Supplied without grille



RCX-690

3-way coaxial kit, elliptic  
Woofer: 6"x9" (164x235mm)  
Mounting depth: 3<sup>11/64"</sup> (80.5mm)  
Voice-coil diameter: 1<sup>3/8"</sup> (35mm)  
Magnet: 4<sup>1/3"</sup> (110mm)  
1" Mylar tweeter/medium  
Max. power: 160W  
Nom. power: 80W RMS  
Sensitivity (2.83V/1m): 92dB  
Frequency response: 50Hz-21kHz  
Supplied with grille, fastening and screws



RSE-130

2-way component kit  
Diameter: 5" (130mm)  
Polypropylene cone  
Mounting depth: 2<sup>29/64"</sup> (54.5mm)  
Voice-coil diameter: 1" (25mm)  
Magnet: 3<sup>25/64"</sup> (86mm)  
1" Mylar inverted dome tweeter  
Separated pre wired crossover (12dB/oct)  
Max. power: 100W  
Nom. power: 50W RMS  
Sensitivity (2.83V/1m): 90dB  
Frequency response: 65Hz-21kHz  
Supplied with grille, fastening and screws



RSE-165

2-way component kit  
Diameter: 6<sup>1/2"</sup> (165mm)  
Polypropylene cone  
Mounting depth: 2<sup>5/8"</sup> (66.5mm)  
Voice-coil diameter: 1" (25mm)  
Magnet: 3<sup>25/64"</sup> (86mm)  
1" Mylar inverted dome tweeter  
Separated pre wired crossover (12dB/oct)  
Max. power: 120W  
Nom. power: 60W RMS  
Sensitivity (2.83V/1m): 91.5dB  
Frequency response: 60Hz-21kHz  
Supplied with grille, bindings and screws



RSB-250

Subwoofer  
Diameter: 10" (250mm)  
Polypropylene cone  
Mounting depth: 4<sup>39/64"</sup> (117mm)  
Dual voice-coil: 4+4Ω  
Voice-coil diameter: 2" (50mm)  
Magnet: 5<sup>1/2"</sup> (140mm)  
Max. power: 500W  
Nom. power: 250W RMS  
Sensitivity (2.83 V/1m): 88dB  
Frequency response: 35Hz-500Hz



RSB-300

Subwoofer  
Diameter: 12" (300mm)  
Polypropylene cone  
Mounting depth: 5<sup>9/32"</sup> (142mm)  
Dual voice-coil: 4+4Ω  
Voice-coil diameter: 2" (50mm)  
Magnet: 5<sup>43/64"</sup> (144mm)  
Max. power: 600W  
Nom. power: 300W RMS  
Sensitivity (2.83V/1m): 90dB  
Frequency response: 30Hz-500Hz



AP-4340

Class AB amplifier - 4/3/2 channels  
RCA inputs  
CEA Power (4Ω): 4x70W RMS  
Max. power (2Ω): 4x95W RMS  
Max. power (bridged 4Ω): 2x190W RMS  
High pass crossover (channel 1-2): 60Hz-1.2kHz  
High pass crossover (channel 3-4): 100Hz-2.2kHz  
Low pass crossover: 50-250Hz  
Full range mode  
Frequency response: 10Hz-30kHz  
Dimensions: (LxHxI): 13<sup>25/64"</sup>x2"x9<sup>1/4"</sup> (340x50x235mm)





# INTEGRATION

## Instant gratification

Do you have a car and like listening to music?  
Do you want to improve its original audio system  
while keeping a discreet and perfectly integrated  
sound solution?

The solution is here: the Integration range of systems. Quick and easy to fit, even by owners themselves, these speakers guarantee the best of Focal Sound. There are no technical or aesthetic changes to your car interior; your car headunit is not changed, your steering-wheel controls work perfectly! At the heart of the **Universal** line, every compactly sized system is very simple to fit. If you have a vehicle covered by one of our dedicated kits, the **Plug & Play** range means you can enjoy an installation 100% compatible with original-fit equipment. Forget the old, now you can hear all the difference and live the emotion that comes from quality sound.



# D1

PLUG & PLAY  
Dedicated to your car ..... 42

# D2

UNIVERSAL  
Total integration of Focal sound  
in your car..... 46



INTEGRATION **PLUG & PLAY**

2-way component + coaxial kits  
TOYOTA\*

IS 165 TOY

2-way component kit  
Cars compatibility\*\*: Corolla, Yaris, Auris, Rav 4, Innova, Fortuner...  
The tweeter needs to be adapted in factory location (fixing, glueing...)  
Diameter: 6 1/2" (165mm)  
Fiberglass cone  
Aluminum inverted dome compact tweeter  
Integrated crossover: 6dB/oct  
Max. power: 120W  
Nom. power: 60W RMS  
Sensitivity (2.83V/1m): 91dB  
Frequency response: 60Hz-20Khz  
Nominal impedance: 4Ω



IS 690 TOY

2-way component kit  
Cars compatibility\*\*: Prius, Camry, Tacoma, Tundra, Alphard, FJ Cruiser...  
The tweeter needs to be adapted in factory location (fixing, glueing...)  
Diameter: 6"x9"  
Fiberglass cone  
Aluminum inverted dome compact tweeter  
Integrated crossover: 6dB/oct  
Max. power: 150W  
Nom. power: 75W RMS  
Sensitivity (2.83V/1m): 92dB  
Frequency response: 50Hz-20kHz  
Nominal impedance: 4Ω



TOYOTA\* is a registered trademark.

IC 690 TOY\*

2-way coaxial kit  
Cars compatibility\*\*: Prius, Camry, Tacoma, Tundra, Alphard, FJ Cruiser...  
Diameter: 6"x9"  
Fiberglass cone  
Aluminum inverted dome compact tweeter  
Integrated crossover: 6dB/oct  
Max power: 150W  
Nom. power: 75W RMS  
Sensitivity (2.83V/1m): 92dB  
Frequency response: 50Hz-20kHz  
Nominal impedance: 4Ω



IC 165 TOY

2-way coaxial kit  
Cars compatibility\*\*: Corolla, Yaris, Auris, Innova, Fortuner, Avanza, Altis,Hi-Lux, and for rear installation  
Diameter: 6 1/2" (165mm)  
Fiberglass cone  
Aluminum inverted dome tweeter  
Integrated crossover: 6dB/oct  
Max. power: 120W  
Nom. power: 60W RMS  
Sensitivity (2.83V/1m): 91dB  
Frequency response: 60Hz-20kHz  
Nominal impedance: 4Ω



\* Within the limit of available stock.  
\*\* Non-exhaustive list of vehicles (update on [www.focal.com](http://www.focal.com)).  
Assembly can be different by countries.

INTEGRATION **PLUG & PLAY**

2-way component + coaxial kits  
VOLKSWAGEN\*

IS 165 VW

2-way component kit  
Cars compatibility front assembly\*: Golf 6/Bora/Jetta ...  
This kit can be assembled on the rear of: Golf 6/Tiguan  
The tweeter needs to be adapted in factory location (fixing, glueing...)  
Diameter: 6 1/2" (165mm)  
Fiberglass cone  
Aluminum inverted dome TN44 tweeter  
Integrated crossover: 6dB/oct  
Max. power: 120W  
Nom. power: 60W RMS  
Sensitivity (2.83V/1m): 92dB  
Frequency response: 60Hz-20Khz  
Nominal impedance: 4Ω



\* Non-exhaustive list of vehicles (update on [www.focal.com](http://www.focal.com)).  
Assembly can be different by countries.

IC 165 VW

2-way coaxial kit  
Rear or front assembly for car without tweeter factory location (Polo/Jetta...)\*  
Diameter: 6 1/2" (165mm)  
Fiberglass cone  
Aluminum inverted dome TN44 tweeter  
Integrated crossover: 6dB/oct  
Max. power: 120W  
Nom. power: 60W RMS  
Sensitivity (2.83V/1m): 92dB  
Frequency response: 60Hz-20Khz  
Nominal impedance: 4Ω



\* Non-exhaustive list of vehicles (update on [www.focal.com](http://www.focal.com)).  
Assembly can be different by countries.

VOLKSWAGEN\* is a registered trademark.

INTEGRATION **PLUG & PLAY**

HANDCRAFTED  
IN FRANCE

IFP 207  
PEUGEOT\*

IFP 207

2-way component kit  
Cars compatibility (Front assembly):  
- 207  
- 307 (with technical modifications)  
- 308 (with technical modifications)  
Diameter: 6 1/2" (165mm)  
Polyglass cone  
TNB Aluminum/Magnesium inverted dome tweeter  
Integrated crossover: 6/18dB/oct  
Max. power: 140W  
Nom. power: 70W RMS  
Sensitivity (2.83V/1m): 92.7dB  
Frequency response: 70Hz-25kHz



Installation 100% dedicated to Peugeot 207 in less than an hour.  
Watch the demonstration video: [www.focal.com/ifp207/en](http://www.focal.com/ifp207/en)

Peugeot\* is a registered trademark of PSA.



INTEGRATION **PLUG & PLAY**

2-way component + coaxial kits + subwoofer

BMW®

IFBMW-S

2-way component kit\*:  
Cars compatibility:  
- BMW 1 serie (E81/82/87/88/F20\*)  
- BMW 3 serie (E90/91/F30/F31\*)  
- BMW 5 serie (F10\*)\*  
- BMW X1 (E84)  
Diameter: 4" (100mm)  
Polyglass cone  
TNB Aluminum/Magnesium  
inverted dome tweeter  
Integrated crossover: 18dB/oct (4kHz)  
Max power: 80W  
Nom power: 40W RMS  
Sensitivity (2.83V/1m): 90.5dB  
Frequency response: 85Hz-22kHz  
Nominal impedance: 4Ω



HANDCRAFTED  
IN FRANCE

\* Technical wire adaptation to fit in those cars models.  
Non-exhaustive list of vehicles (update on [www.focal.com](http://www.focal.com)).

IFBMW-S



Installation 100% dedicated to BMW (3 Serie/1 Serie/X1)  
in less than an hour.  
IFBMW-S demonstration video: [www.focal.com/ifbmw-s/en](http://www.focal.com/ifbmw-s/en)

IFBMW-C

2-way coaxial kit  
Cars compatibility\*:  
- BMW 1 serie (E81/82/87/88/F20\*)  
- BMW 3 serie (E90/91/F30/F31\*)  
- BMW 5 serie (F10\*)\*  
- BMW X1 (E84)\*  
Diameter: 4" (100mm)  
Polyglass cone  
TNB Aluminum/Magnesium  
inverted dome tweeter  
Integrated crossover: 18dB/oct (4kHz)  
Max power: 80W  
Nom power: 40W RMS  
Sensitivity (2.83V/1m): 90.5dB  
Frequency response: 85Hz-22kHz  
Nominal impedance: 4Ω



HANDCRAFTED  
IN FRANCE

\* Technical wire adaptation to fit in those cars models.  
Non-exhaustive list of vehicles (update on [www.focal.com](http://www.focal.com)).


IFBMW-C



Installation 100% dedicated to BMW (3 Serie/1 Serie/X1)  
in less than an hour.  
IFBMW-C demonstration video: [www.focal.com/ifbmw-c/en](http://www.focal.com/ifbmw-c/en)

IFBMW-SUB.V2

Subwoofer (sold by unit)  
Cars compatibility\* (under the front seats in ABS factory location)  
- BMW 1 Series (E81/82/87/88-F20/21),  
- BMW 3 Series (E90/91/92/93-F30/F31),  
- BMW X1 (E84),  
- BMW 5 Series (F10/F11)  
Possibilities of adaptation in other models.  
Diameter: 8" (200mm)  
Polypropylene cone  
Mounting depth: 139/64" (41mm)  
Power, sensitivity and frequency response  
were measured in real car situation  
Max power: 180W  
Nom power: 90W RMS  
Sensitivity (2.83V/1m): 90.5dB (58Hz)  
Frequency response: 38Hz-200Hz  
Nominal impedance: 3.6Ω  
Accessory: Metal grille (top cover)



\* Upgrade for BMW® factory standard level.  
Non-exhaustive list of vehicles.

BMW® is a registered trademark of BMW® group.

INTEGRATION **PLUG & PLAY**

Ultra-compact amplifier

IMPULSE 4.320

Class D ultra-compact 4 channels amplifier - 4/3/2 channels  
CEA power (4Ω): 4x55W RMS  
Power max (2Ω): 4x80W RMS  
Power max (4Ω bridged): 2x160W RMS  
Activatable/deactivatable crossovers fixed at 75Hz on channels 1/2  
Configurable Crossovers from 40Hz-200Hz on channels 3/4  
Adjustable Phase 0/180° on channels 3/4  
Copy Mode (4CH/2CH)  
Protections: Short circuit/over-current/reverse polarity/DC/voltage drop/heat protection  
Dimensions (HxWxD): 6 7/8"x2 5/8"x1 7/8" (175x66.5x47mm)  
Weight: 1.2lbs (550g)



[NB : This pen is not for sale.  
It only indicates scale.]



IY - AC IMPULSE 4.320

Adapter Y cable - Focal Impulse 4.320  
ISO standard  
Easy Plug & Play installation  
Length: 1m  
No soldering or modification of your original system  
ISO standard compatible

INTEGRATION **PLUG & PLAY**

Active bass enclosures

Ibus 2.1

True 2.1 system - Unique concept!  
1 amplifier for the subwoofer + 1 amplifier  
for the front channels very high power.

Active enclosure with 8" (20cm) subwoofer  
Max. power: 150W  
Nom. power: 75W RMS  
Frequency response: 45Hz-150Hz  
High-level inputs  
Autopower ON  
Amplification 2 front channels  
Nom. power: 2x55W RMS  
Max. power: 2x110W max.  
Dimensions (HxWxD):  
2 13/16"x13 9/16"x9 3/16" (71.5x344x250mm)



Ibus 20

Active enclosure with 8" (20cm) subwoofer  
Max.power: 150W  
Nom. power: 75W RMS  
Frequency response: 45Hz-150Hz  
High-level inputs  
Autopower ON  
Dimensions (HxWxD):  
2 13/16"x13 9/16"x9 3/16" (71.5x344x250mm)



IY Bus

Only one remote control to control the sound  
level of the two Ibus enclosures (Ibus 20/2.1)  
Supplied with cables





ISU 130

2-way component kit  
Diameter: 5" (130mm)  
Mounting depth: 1<sup>59/64"</sup> (48.9mm)  
Polyglass cone  
Voice-coil diameter: 1" (25mm)  
Aluminum/Magnesium inverted dome tweeter  
Integrated crossover (connectors): 6dB/oct  
Max. power: 120W  
Nom. power: 60W RMS  
Sensitivity (2.83V/1m): 91.8dB  
Frequency response: 90Hz-21kHz  
Accessories: tweeter support, crossover on connectors  
Supplied without grille



ISU 165

2-way component kit  
Diameter: 6<sup>1/2"</sup> (165mm)  
Mounting depth: 1<sup>29/32"</sup> (48.4mm)  
Polyglass cone  
Voice-coil diameter: 1" (25mm)  
Aluminum/Magnesium inverted dome tweeter  
Integrated crossover (connectors): 6dB/oct  
Max. power: 140W  
Nom. power: 70W RMS  
Sensitivity (2.83V/1m): 93dB  
Frequency response: 60 Hz-21kHz  
Accessories: tweeter support, crossover on connectors  
Supplied without grille



ISU 200

2-way component kit  
Diameter: 8" (200mm)  
Mounting depth: 2<sup>1/2"</sup> (63.5mm)  
Polyglass cone  
Voice-coil diameter: 1" (25mm)  
Aluminum/Magnesium inverted dome tweeter  
Integrated crossover (connectors): 6dB/oct  
Max. power: 160W  
Nom. power: 80W RMS  
Sensitivity (2.83V/1m): 93dB  
Frequency response: 40Hz-21kHz  
Accessories: tweeter support, crossover on connectors  
Supplied without grille



ISU 690

2-way component kit  
Diameter: 6x9" (164x235 mm)  
Mounting depth: 3<sup>9/32"</sup> (83.5mm)  
Polyglass cone  
Voice-coil diameter: 1" (25mm)  
Aluminum/Magnesium inverted dome tweeter  
Integrated crossover (connectors): 6dB/oct  
Max. power: 160W  
Nom. power: 80 W RMS  
Sensitivity (2.83 V/1m): 93.6 dB  
Frequency response: 55 Hz - 21 kHz  
Accessories: tweeter support, crossover on connectors  
Supplied without grille



Tweeter TWU 1.5

Max. power: 100W  
Nom. power: 15W RMS  
Sensitivity (2.83V/1m): 94dB  
Integrated crossover: 6dB/oct  
Aluminum/Magnesium inverted dome tweeter  
4 possibilities: Flush, surface, tilted mouting, in factory location



\* Aluminum/Magnesium

Inverted Al/Mg\* dome tweeter  
Compact Shape  
Clearer and more detailed sound  
Easy installation

Basket  
Optimized dimensions  
and depth

EASILY IMPROVE...

ICU 100

2-way coaxial kit  
Diameter: 4" (100mm)  
Mounting depth: 3<sup>5/8"</sup> (49mm)  
Polyglass cone  
Voice-coil diameter: 1" (25mm)  
Aluminum/Magnesium inverted dome tweeter  
Integrated crossover: 6dB/oct  
Max. power: 80W  
Nom. power: 40W RMS  
Sensitivity (2.83V/1m): 90.3dB  
Frequency response: 90Hz-21kHz  
Supplied without grille



ICU 130

2-way coaxial kit  
Diameter: 5" (130mm)  
Mounting depth: 1<sup>59/64"</sup> (48.9mm)  
Polyglass cone  
Voice-coil diameter: 1" (25mm)  
Aluminum/Magnesium inverted dome tweeter  
Integrated crossover: 6dB/oct  
Max. power: 120W  
Nom. power: 60W RMS  
Sensitivity (2.83V/1m): 91.8dB  
Frequency response: 80Hz-21kHz  
Supplied without grille



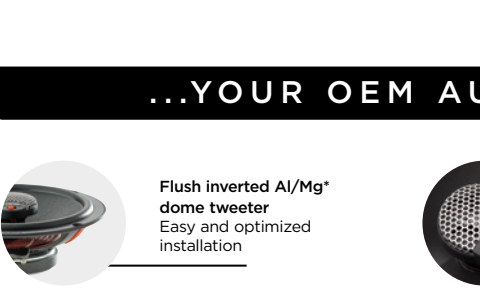
ICU 165

2-way coaxial kit  
Diameter: 6<sup>1/2"</sup> (165mm)  
Mounting depth: 2" (50mm)  
Polyglass cone  
Voice-coil diameter: 1" (25mm)  
Aluminum/Magnesium inverted dome tweeter  
Integrated crossover: 6dB/oct  
Max. power: 140W  
Nom. power: 70W RMS  
Sensitivity (2.83V/1m): 93dB  
Frequency response: 60 Hz-21kHz  
Supplied without grille



ICU 570

2-way coaxial kit  
Diameter: 5x7" (130x180mm)  
Mounting depth: 2<sup>9/64"</sup> (59.3mm)  
Polyglass cone  
Voice-coil diameter: 1" (25mm)  
Aluminum/Magnesium inverted dome tweeter  
Integrated crossover: 6dB/oct  
Max. power: 120W  
Nom. power: 60W RMS  
Sensitivity (2.83V/1m): 94dB  
Frequency response: 65Hz-21kHz  
Supplied without grille



ICU 690

2-way coaxial kit  
Diameter: 6x9" (165x237mm)  
Mounting depth: 3<sup>9/32"</sup> (83.5mm)  
Polyglass cone  
Voice-coil diameter: 1" (25mm)  
Aluminum/Magnesium inverted dome tweeter  
Integrated crossover: 6dB/oct  
Max. power: 160W  
Nom. power: 80W RMS  
Sensitivity (2.83 V/1m): 93.6dB  
Frequency response: 55Hz-21kHz  
Supplied with grille



...YOUR OEM AUDIO SYSTEM

Flush inverted Al/Mg\*  
dome tweeter  
Easy and optimized  
installation

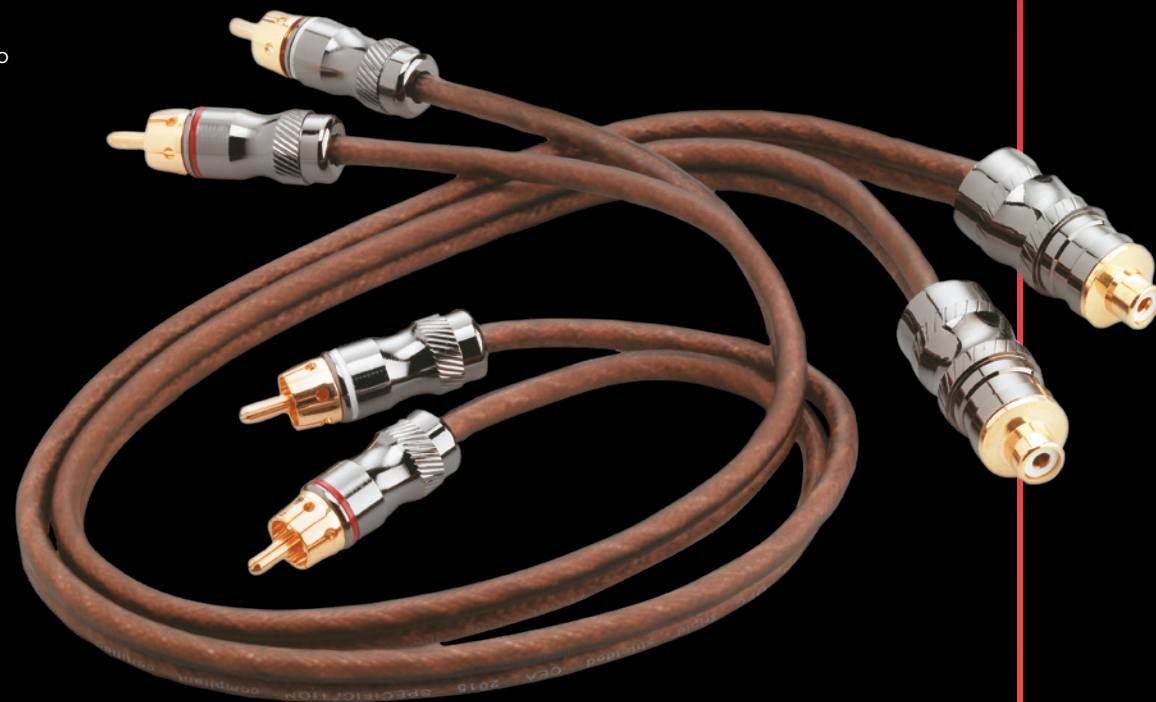
Adjustable Tweeter Level  
High frequencies  
performance tuning



# ACCESSORIES

When you replace your factory audio system, you're bound to have high expectations in terms of acoustics. Accessories are essential components of your audio architecture for helping you to achieve the sound you want. Focal offers various solutions for meeting your amplification needs with the **Hilo V2**. Accessories and cables also optimise the connections between your system's elements: the head unit, the electronics and the acoustic components. They guarantee high-quality audio and ensure the safety of your hi-fi installation, and they meet your expectations in terms of hi-fi quality.

By using the appropriate accessories, you're sure to get the best out of your audio system.



## ACCESSORIES

### Hilo.V2

Converts a stereo amplified signal in two low-level line outputs for an amplifier.

Eliminates parasitic interferences - separated grounds

Selectable DC and AC voltages detection and is compatible with any original manufacturer head-units.

It automatically generates a remote control signal to activate the associated amplifier can be used in passive mode without 12V power supply (In that case the remote output doesn't work).

### HILO.V2

High-level to RCA line stereo converter

Converts a stereo amplified signal in two low-level line outputs for an amplifier

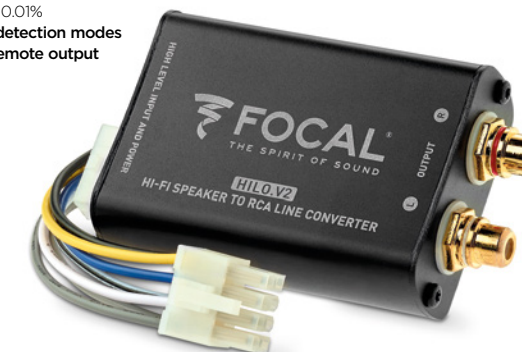
Bandwidth: (+/-1dB) : 10Hz - 80kHz

Signal/Noise ratio > 100dB

Distorsion < 0.01%

DC and AC detection modes

Automatic remote output





ACCESSORIES

Cables



PK8

**8 AWG**  
**Complete supply kit**  
(Amplifier-speakers)  
16ft (4.9m) supply cable (8.3mm²)  
3.3ft (1m) ground cable (8.3mm²)  
32.8ft (10m) speaker cable  
16.4ft (5m) remote cable  
16.4ft (5m) RCA cable  
(2x90° bent plugs and 2 straight plugs)  
60A fuse-box  
Accessory pack

PK21

**4AWG**  
**Complete supply kit**  
(Amplifier-speakers)  
16ft (4.9m) supply cable (21mm²)  
3.3ft (1m) ground cable (21mm²)  
32.8ft (10m) speaker cable  
16.4ft (5m) remote cable  
16.4ft (5m) RCA cable  
(2x90° bent plugs and 2 straight plugs)  
80A fuse-box  
Accessory pack

ER1

RCA cable  
1x1m (3.3ft)

ER5

RCA cable  
1x5m (16.4ft)



ER3

RCA cable  
1x3m (9.9ft)

EY05

RCA cable  
2x0.5m (2x1.64ft)



ES15

**1 roll: 15 AWG**  
12mx1.5mm²  
(39ft)

ES4

**1 roll: 11 AWG**  
12mx4mm²  
(39ft)



PR5

RCA cable  
5m (16.4ft)  
Male/male plugs  
2x90° bent plugs  
for difficult locations



PS15

**Flat speaker cable.**  
15 AWG/1.5mm²  
High performances, easy to install.  
Soft touch insulant.  
Roll: 39ftx15 AWG  
(12mx1.5mm²)

PS25

**Flat speaker cable.**  
13 AWG/2.5mm²  
High performances, easy to install.  
Soft touch insulant.  
Roll: 39 ftx13 AWG  
(12mx2.5mm²)

ACCESSORIES

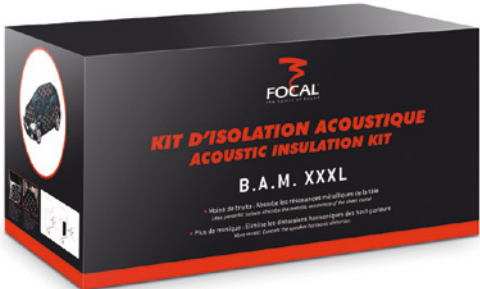
Acoustic insulation & tools

B.A.M.

**3 technical materials, 3 strategic functions**  
This acoustic insulation kit is completing and essential to a quality car audio installation.  
From its use depends optimum acoustic rendering of speakers, amplifiers and installed accessories.  
Technical materials made of honeycombed damping material, an aluminum sheet and a viscoelastic complex (Butyl).

B.A.M. XXXL

1 roll of 19<sup>11/16</sup>"x236<sup>1/4</sup>" (50x600cm) (3m²)



B.A.M.

2 sheets 8<sup>1/4</sup>"x11<sup>13/16</sup>"  
(21x30cm)



Tool Set

**Set of 11 composite tools to remove door panel.**  
The complementary product for quality car audio installations without risk of aesthetic damage.



B.A.M. XL

1 sheet 19<sup>11/16</sup>"x78<sup>3/4</sup>"  
(50x200cm) (1m²)



classic loudspeakers



custom install



car audio



headphones & multimedia



studio monitors



**FOCAL**

**Focal-JMLab\* - BP 374 - 108, rue de l'Avenir - 42353 La Talaudière cedex - France - +33 (0) 477 435 700**

Focal® is a registered trademarks of Focal-JMLab\*. Non-binding pictures. Photos L'Atelier Sylvain Madelon. SCAA180925/9 - PC1122  
Due to constant technological advances, Focal-JMLab\* reserves its right to modify prices and specifications without notice.



EXP - GB  
October 2018