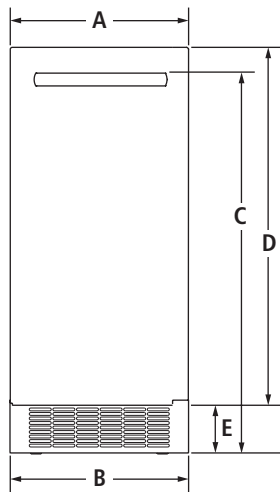


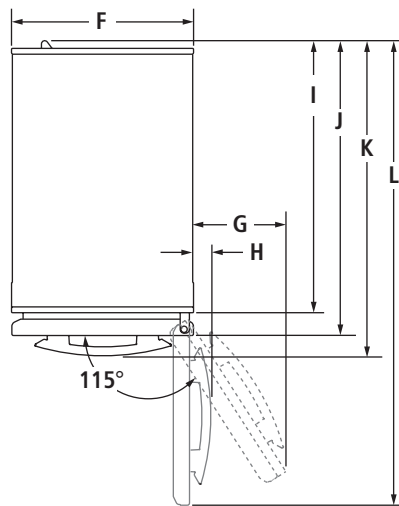
15" ICE MACHINES

JUIFX15H, JUIFN15H – 14⁷/₈" x 33¹³/₁₆" x 24¹/₆₄" (depth without handle)

PRODUCT DIMENSIONS

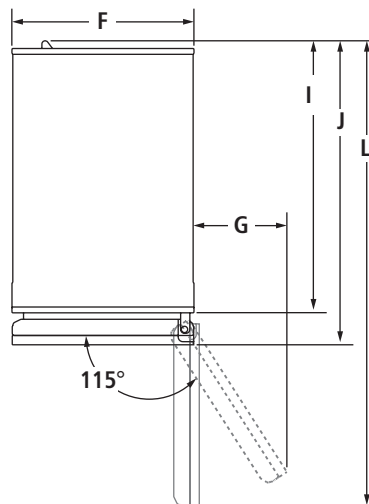


FRONT VIEW



TOP VIEW

TOP VIEW



MODEL #		JUIFX15H		JUIFN15H	
		in	cm	in	cm
A	Width	14 ⁷ / ₈	37.8	14 ⁷ / ₈	37.8
B	Width of grille	14 ²⁵ / ₃₂	37.6	14 ²⁵ / ₃₂	37.6
C	Height to top of handle				
	Euro-Style Stainless	31 ²¹ / ₃₂	80.4	31 ²¹ / ₃₂	80.4
	Custom panel	*	*	*	*
D	Height of door	29 ⁷ / ₈	75.9	29 ⁷ / ₈	75.9
E	Height of grille	3 ⁵⁵ / ₆₄	9.8	3 ⁵⁵ / ₆₄	9.8
F	Width of recessed ice machine	14 ²³ / ₃₂	37.4	14 ²³ / ₃₂	37.4
G	Width from side of ice machine to door fully open	6 ¹ / ₆₄	15.3	6 ¹ / ₆₄	15.3
H	Width from side of ice machine to handle – door open 90°				
	Euro-Style Stainless	1 ³⁷ / ₆₄	4.0	1 ³⁷ / ₆₄	4.0
	Custom panel	*	*	*	*
I	Depth without door	22 ³ / ₃₂	56.1	22 ³ / ₃₂	56.1
	Depth with door (min.)	24 ¹ / ₆₄	61.0	24 ¹ / ₆₄	61.0
J	Depth with custom panel (min.)**	24 ⁷ / ₈	63.2	24 ⁷ / ₈	63.2
K	Depth with handle				
	Euro-Style Stainless	25 ³⁷ / ₆₄	65.0	25 ³⁷ / ₆₄	65.0
	Custom panel	*	*	*	*
L	Depth with door open 90°	39 ³¹ / ₆₄	100.3	39 ³¹ / ₆₄	100.3

*For custom panel models, this depends on handle chosen.

**Includes recommended 3/4" (1.9 cm) custom panel thickness (JUIFX15HX).

IMPORTANT: Dimensional specifications are provided for planning purposes only.

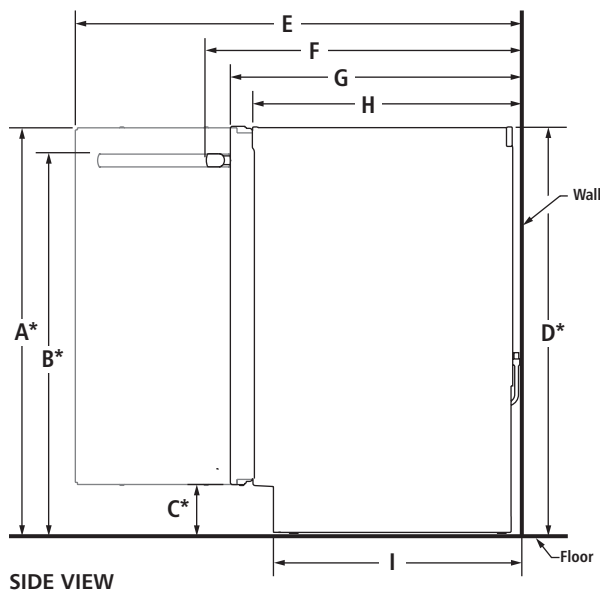
Do not make any cutouts based on this information. Refer to the Installation Guide before selecting cabinetry, verifying electrical/gas connections, making cutouts or beginning installation.

All Jenn-Air® appliances are appropriately UL, CUL or CSA approved.

15" ICE MACHINES

JUIFX15H, JUIFN15H – 14⁷/₈" x 33¹³/₁₆" x 24¹/₆₄" (depth without handle)

DIMENSIONS AS INSTALLED



MODEL #		JUIFX15H JUIFN15H	
		in	cm
A*	Height to top of door (min.)	33 ¹³ / ₁₆	85.9
B*	Height to top of handle (min.)		
	Euro-Style Stainless	31 ⁴⁷ / ₆₄	80.6
	Custom panel	**	**
C*	Height to top of grille (min.)	3 ¹⁵ / ₁₆	10.0
D*	Height of recessed ice machine (min.)	33 ⁵ / ₈	85.4
E	Depth with door open 90° (min.)	39 ¹⁵ / ₃₂	100.3
F	Depth with handle (min.)		
	Euro-Style Stainless	25 ³⁷ / ₆₄	65.0
	Custom panel	**	**
G	Depth with door (min.)	24 ¹ / ₆₄	61.0
	Depth with custom panel (min.) [†]	24 ⁷ / ₈	63.2
H	Depth without door (min.)	22 ⁵ / ₆₄	56.1
I	Depth of grille (min.)	20 ²⁵ / ₆₄	51.8

*Add 1" (2.5 cm) to the height dimension when leveling legs are fully extended.

**For custom panel models, this depends on handle chosen.

[†]Includes recommended ³/₄" (1.9 cm) custom panel thickness (JUIFX15HX).

IMPORTANT: Dimensional specifications are provided for planning purposes only.

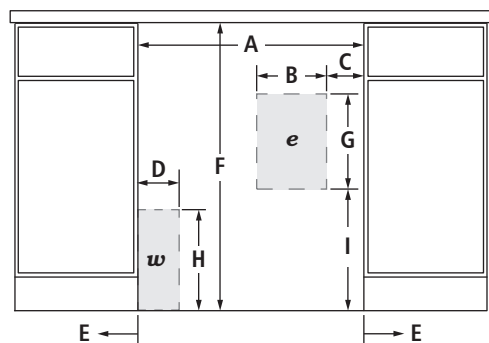
Do not make any cutouts based on this information. Refer to the Installation Guide *before* selecting cabinetry, verifying electrical/gas connections, making cutouts or beginning installation.

All Jenn-Air® appliances are appropriately UL, CUL or CSA approved.

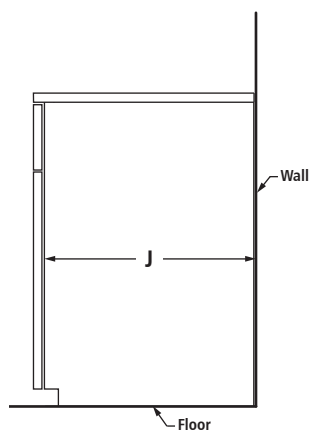
15" ICE MACHINES

JUIFX15H, JUIFN15H – 14⁷/₈" x 33¹³/₁₆" x 24¹/₆₄" (depth without handle)

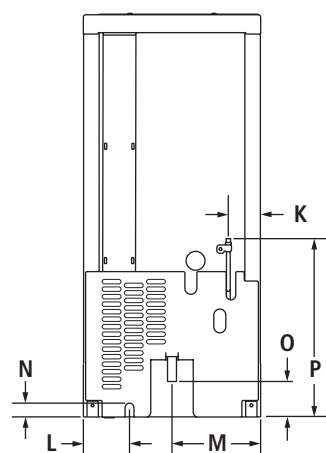
OPENING/CLEARANCE DIMENSIONS



FRONT VIEW



SIDE VIEW



BACK VIEW

MODEL #	JUIFX15H JUIFN15H	
	in	cm
A	Width (min.)	15 38.1
	Width without hinge side spacer option (min.)	15 38.1
	Width with hinge side spacer option (min.)	*15 ³ / ₄ * *40.0*
B	Width of outlet location	6 15.0
C	Outlet location – distance from side	1 2.5
D	Width of water connection location	3 ¹ / ₂ 8.9
E	Minimum width from hinged side of ice machine to fixed wall – door open 90°	2 5.1
	Minimum width from hinged side of ice machine to fixed wall – door fully open 180°	13 ¹ / ₄ 33.7
	Minimum width from hinged side of ice machine to fixed wall – door fully open 118°	6 ⁷ / ₈ 17.4
F	Height (min.)	34 86.4
G	Height of outlet location	*15 ³ / ₄ * *40.0*
H	Height of water connection location	6 15.0
I	Outlet location – distance from bottom	1 2.5
J	Depth of cabinet (min.)	3 ¹ / ₂ 8.9
K	Water line location – distance from side	2 5.1
L	Power supply – distance from side	13 ¹ / ₄ 33.7
M	Drain hose – distance from side	6 ⁷ / ₈ 17.4
N	Power supply – distance from bottom	1 ¹ / ₄ 3.2
O	Drain hose – distance from bottom	2 ⁷ / ₈ 7.3
P	Water line location – distance from bottom	14 ¹⁷ / ₃₂ 36.9
e	Recommended electrical connection location	
w	Recommended water connection location	

*Install ³/₄" (1.9 cm) front hinge-side spacer flush with face of adjacent cabinet and ³/₄" (1.9 cm) back hinge-side spacer 6" (15.2 cm) from back wall.

ELECTRICAL REQUIREMENTS

115 volt, 60 Hz, AC only, 15- or 20-amp fused, grounded circuit is required. A dedicated circuit is recommended. Use an outlet that cannot be turned off by a switch. Do not use an extension cord.

WATER PRESSURE REQUIREMENTS

A cold water supply with water pressure between 30 and 120 psi (207 and 827 kPa) is required to operate the ice maker. Call a licensed, qualified plumber with any questions about the water pressure.

Reverse Osmosis Water Supply

IMPORTANT: The use of a reverse osmosis system with this product is not recommended. However if you do use reverse osmosis, follow these instructions.

IMPORTANT: The pressure of the water coming out of a reverse osmosis system going to the water inlet valve of the ice machine needs to be between 30 and 120 psi (207 and 827 kPa).

If a reverse osmosis water filtration system is connected to the cold water supply, the water pressure to the reverse osmosis system needs to be a minimum of 40 to 60 psi (276 to 414 kPa).

IMPORTANT: Dimensional specifications are provided for planning purposes only.

Do not make any cutouts based on this information. Refer to the Installation Guide *before* selecting cabinetry, verifying electrical/gas connections, making cutouts or beginning installation. All Jenn-Air® appliances are appropriately UL, CUL or CSA approved.