

VS24

FEATURES

Chamber vacuum seal liquids and fragile foods

Pair with Wolf ovens or steamer module for easy meal prep

Stainless, black glass, or custom panel options in 24" or 30" widths

Seal wine and other rigid containers with included accessory

Exceptional 24/7 support from our Customer Care team in Madison

Rigorously tested in our U.S. manufacturing facilities for decades of use

ACCESSORIES

24" Black Glass Front Panel

24" Stainless Front Panel

30" Black Glass Front Panel

30" Stainless Front Panel

Integrated Front Panel

Large Bags - 9 1/2" x 13 5/8"

Small Bags - 7 1/4" x 10 3/8"

Wine Stoppers

Accessories available through an authorized dealer.
For local dealer information, visit subzero-wolf.com/locator.



FRONT PANEL OPTIONS



24" DRAWER FRONT STAINLESS PANEL



30" DRAWER FRONT STAINLESS PANEL



24" DRAWER FRONT BLACK PANEL



30" DRAWER FRONT BLACK PANEL

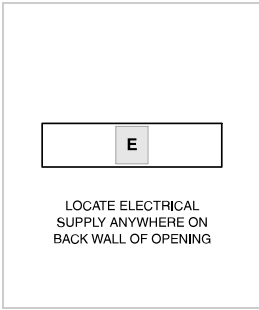


CUSTOM PANEL
Integrated Front Panel Kit Required

PRODUCT SPECIFICATIONS

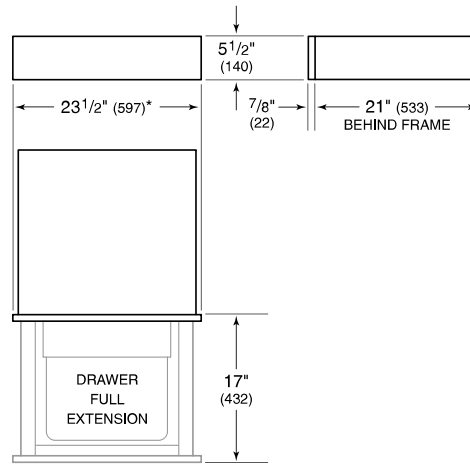
Model	VS24
Capacity	0.25 cu. ft.
Electrical Supply	3-prong grounding-type
Electrical Service	10 amp dedicated circuit
Power Cord Length	3 Feet
Receptacle	3-prong grounding-type

ELECTRICAL



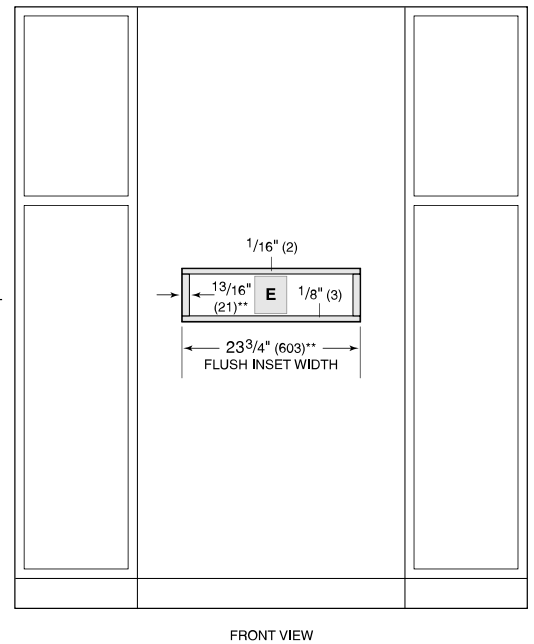
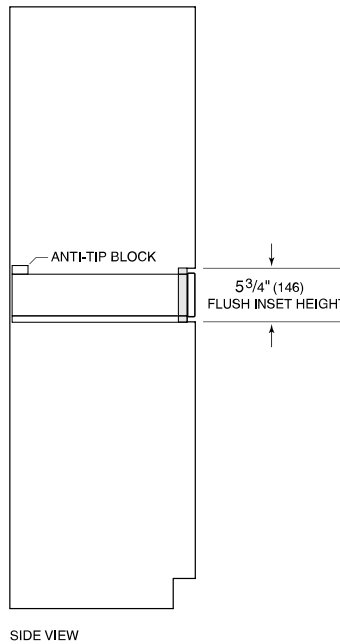
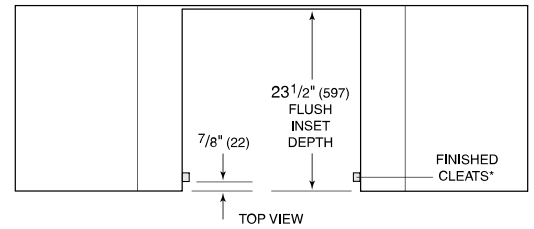
NOTE: Dimensions in parenthesis are in millimeters unless otherwise specified

DIMENSIONS



*29 7/8" (759) width for 30" panel.

FLUSH INSTALLATION



*Will be visible and should be finished to match cabinetry.

**30 1/8" (765) width and 4" (102) cleat dimension for 30" panel.

NOTE: Flush inset width and height dimensions provide minimum reveals.