

VS24

FEATURES

- Chamber vacuum seal liquids and fragile foods

- Pair with Wolf ovens or steamer module for easy meal prep

- Stainless, black glass, or custom panel options in 24" or 30" widths

- Seal wine and other rigid containers with included accessory

- Exceptional 24/7 support from our Customer Care team in Madison

- Rigorously tested in our U.S. manufacturing facilities for decades of use

ACCESSORIES

- 24" Black Glass Front Panel

- 24" Stainless Front Panel

- 30" Black Glass Front Panel

- 30" Stainless Front Panel

- Integrated Front Panel

- Large Bags - 9 1/2" x 13 5/8"

- Small Bags - 7 1/4" x 10 7/8"

- Wine Stoppers

Accessories available through an authorized dealer.
 For local dealer information, visit subzero-wolf.com/locator.



FRONT PANEL OPTIONS



24" DRAWER FRONT STAINLESS PANEL



30" DRAWER FRONT STAINLESS PANEL



24" DRAWER FRONT BLACK PANEL



30" DRAWER FRONT BLACK PANEL

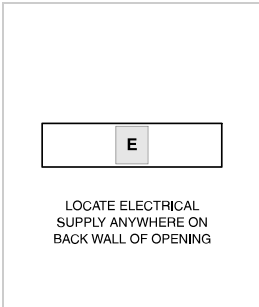


CUSTOM PANEL
Integrated Front Panel Kit Required

PRODUCT SPECIFICATIONS

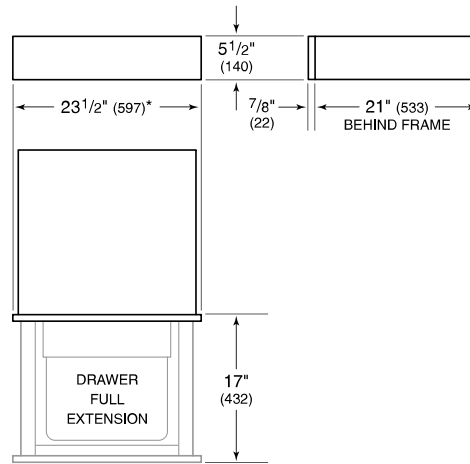
Model	VS24
Capacity	0.25 cu. ft.
Electrical Supply	3-prong grounding-type
Electrical Service	10 amp dedicated circuit
Power Cord Length	3 Feet
Receptacle	3-prong grounding-type

ELECTRICAL



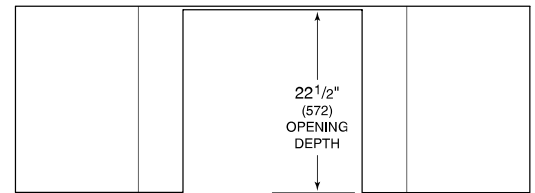
NOTE: Dimensions in parenthesis are in millimeters unless otherwise specified

DIMENSIONS

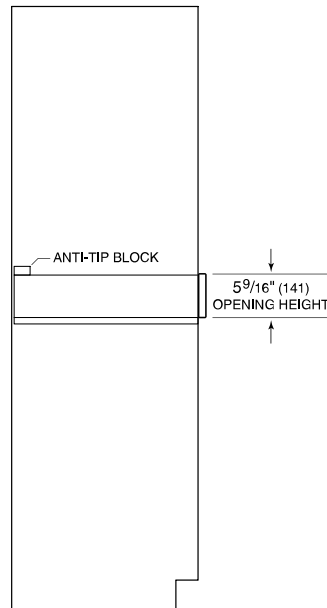


*29 7/8" (759) width for 30" panel.

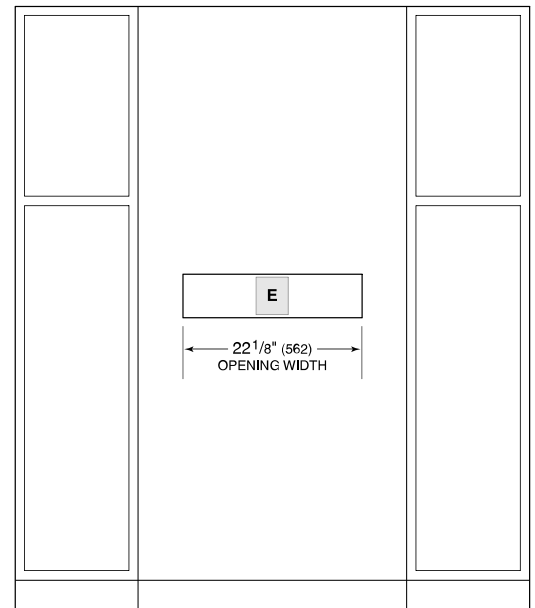
STANDARD INSTALLATION



TOP VIEW



SIDE VIEW



FRONT VIEW