

**RU 510**

Beverage/Wine Cooler



**LIEBHERR**

Quality, Design and Innovation

Liebherr's sleek **RU 510 24"** beverage/wine center stores a variety of drinks to perfection, while keeping them close at hand in any kitchen, bar, or entertainment area. Whether you're entertaining a large group, or having a quiet family night at home, the RU 510 offers amazing capacity and superior storage, with sophisticated design that blends beautifully with any decor.

The **RU 510** features a glass door for a clear view of stored beverages, and an elegant stainless steel frame that can also accommodate a custom panel if desired. The appliance offers a variety of storage flexibility options thanks to the glass shelves with stainless steel trim, a convenient split shelf for storing taller items, and a pull out metal rack. The electronic control system is situated at the top of the interior and is visible through the glass door, allowing for temperature settings between 37°F to 68°F.



### Beverage/Wine Cooler

|  |
|--|
| Energy consumption (kWh/y)             |
| Estimated Yearly Energy Cost in US \$* |
| Sound rating dB(A)**                   |
| Total capacity cu.ft. (l)              |
| Max. No. of Bordeaux bottles (0.75 l)  |
| Number of shelves                      |
| Shelves on telescopic rails            |
| Shelf material                         |
| Electronic control                     |
| Temperature range °F (°C)              |
| Temperature zones                      |
| Interior light                         |
| Door alarm                             |
| Safety thermostat                      |
| Activated Charcoal filter              |
| Door type                              |
| Integrated lock                        |
| Door hinges                            |
| Product dimensions (H/W/D) in. (cm)    |
| Cut out dimensions (H/W/D) in. (cm)    |
| Net weight lbs. (kg)                   |
| Voltage V/Hz                           |
|  |
|  |

**RU 510**

|   |     |                  |               |   |
|---|-----|------------------|---------------|---|
| <b>RU 510</b>   | LED | Telescopic Rails | ADA Compliant |  |
| 449   |     |                  |               |   |
| —   |     |                  |               |   |
| XX  |     |                  |               |   |
| 3.8 (108)   |     |                  |               |   |
| —   |     |                  |               |   |
| 4   |     |                  |               |   |
| 3   |     |                  |               |   |
| glass   |     |                  |               |   |
| LCD temp. display, touch electronic                   |     |                  |               |   |
| +36°F to +68°F (+2°C to +20°C)                        |     |                  |               |   |
| 1   |     |                  |               |   |
| LED lighting permanently on                           |     |                  |               |   |
| acoustic  |     |                  |               |   |
| yes   |     |                  |               |   |
| yes   |     |                  |               |   |
| Glass door with stainless steel frame                 |     |                  |               |   |
| yes   |     |                  |               |   |
| right, reversible                                     |     |                  |               |   |
| 32 1/4" / 23 9/16" / 22 3/4" (81.8/59.7/57.7)         |     |                  |               |   |
| 32 5/16"-34 5/16" / 23 5/8" / 21 11/16" (82-87/60/55) |     |                  |               |   |
| 103.6 (47.0)  |     |                  |               |   |
| 115/60  |     |                  |               |   |
|   |     |                  |               |   |
|   |     |                  |               |   |

\* Estimated energy cost will depend on utility rates and use. Estimated energy cost based on a national average electricity cost of 12 cents per KWh.

\*\* Noise output – according to EN 60704-3.



**German Engineering:** Our superior products offer premium quality, cutting edge design, and innovative features that best fit your lifestyle. The use of high quality materials, perfectly detailed finishes, and elite cooling components are combined with the latest production processes, resulting in an outstanding cooling product.



**Storage shelves:** This unit offers flexible storage options thanks to two glass shelves, a convenient split shelf for storing taller items, and a pull-out metal rack.



Electronic Control

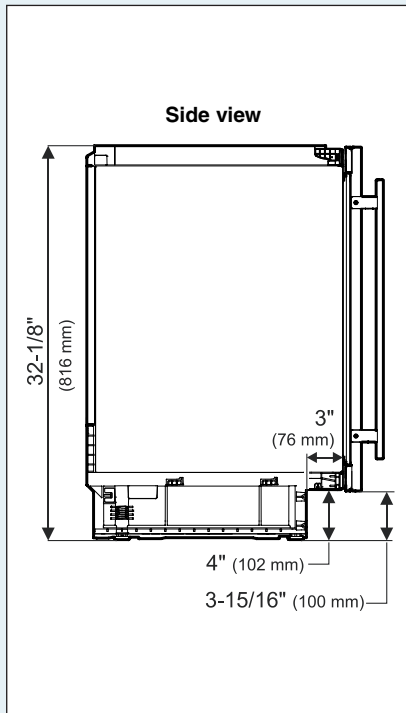
**Precision Electronics:** The electronic control system is situated at the top of the interior. The temperature can be set from 37°F to 68°F. The cabinet includes a lock for added protection of items stored.



LED

**LED Lighting:** The energy efficient LED ceiling light not only emits virtually no heat to cast a cool glow to give a pleasing ambient light inside the appliance as well as the room.

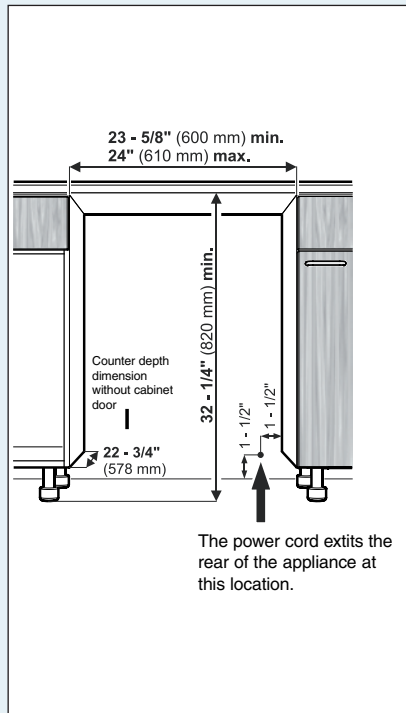
## Appliance and Cabinet Dimensions



Height when adjustable feet have been screwed in as far as they will go.

Delivery status = feet approx. 1/8" unscrewed.

Maximum height adjustment = 2" (51 mm) to allow for a 6" (153 mm) toe kick.

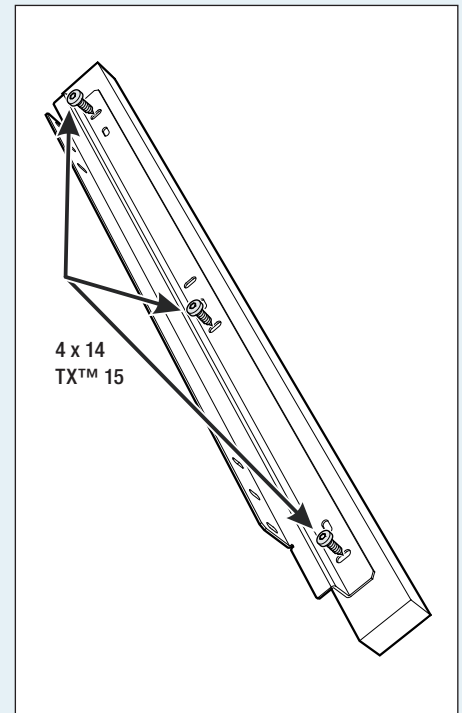


Free length of the power cord = 78-3/4 inch (2000 mm)

### IMPORTANT

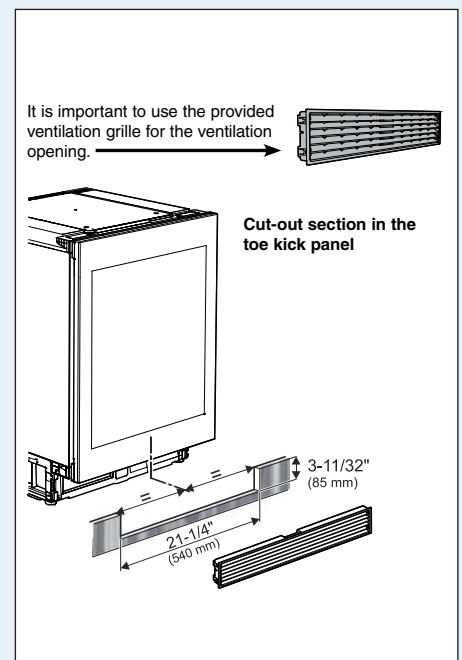
The electrical outlet must not be situated behind the appliance and must be easily accessible.

## Mounting the panel onto the angle bracket



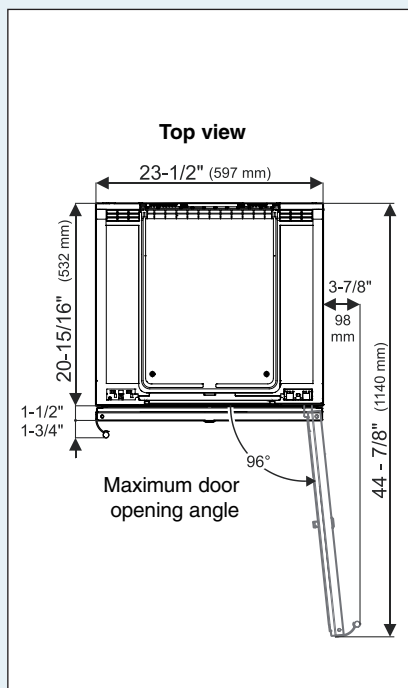
Mount the panel onto the angle bracket using three 4 x 14 screws.

## Appliance Venting



### IMPORTANT

The cut-out section in the toe kick panel must be centered in relation to the appliance and in the uppermost part of the toe kick.



### IMPORTANT

The floor on which the appliance stands must be horizontal and level. The kitchen units must be aligned horizontally and vertically.

