

**UC - 15I****FEATURES**

- Produces up to 50 lbs. of ice per day

---

- Water-filtration system reduces contaminants, chlorine taste and odor

---

- Produces ice in temperatures up to 100° F

---

- Clean and change filter indicator light

---

- Easy-access control panel

---

- Two, four and eight-hour delay feature

---

- Built-in ice scoop

---

- Rigorously tested in our U.S. manufacturing facilities to ensure decades of use

---

- Exceptional 24/7 support from Madison, WI-based Customer Care team

**ACCESSORIES**

- 15" Stainless Door Panel with Pro Handle

---

- 15" Stainless Door Panel with Tubular Handle

---

- 15" to 18" Filler

---

- 18" Stainless Door Panel with Pro Handle

---

- 18" Stainless Door Panel with Tubular Handle

---

- Cleaner for Undercounter Ice Maker

---

- Filter for Undercounter Ice Maker

---

- Sanitizer for Undercounter Ice Maker

---

- Stainless Steel Kickplate

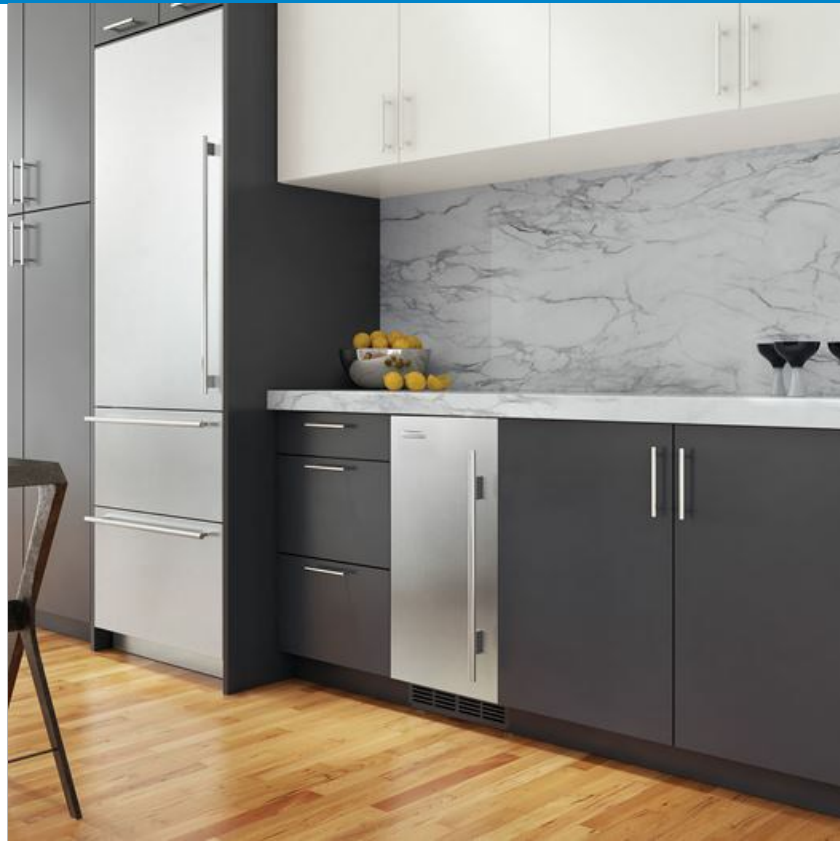
---

- Stainless Steel Pro Handles

---

- Stainless Steel Tubular Handles

Accessories are available through an authorized dealer.  
For local dealer information, visit [subzero-wolf.com/locator](http://subzero-wolf.com/locator).

**HANDLE ACCESSORIES**

PRO



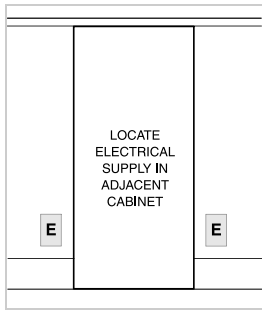
TUBULAR



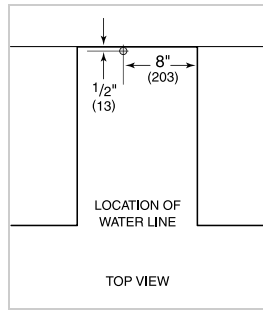
**PRODUCT SPECIFICATIONS**

Model	UC-151
Dimensions	14 3/4"W x 33 5/8"H x 23"D
Door Clearance	18"
Weight	117 lbs
Electrical Supply	115 VAC, 60 Hz
Electrical Service	15 amp dedicated circuit
Receptacle	3-prong grounding-type

**ELECTRICAL**



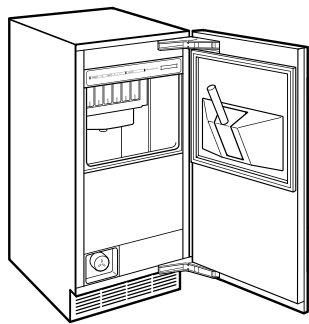
**PLUMBING**



**ICE MACHINE DRAIN** Ice machine models can be ordered with or without a drain pump. Models without a pump will drain water by gravity. A drain must be provided for all models.

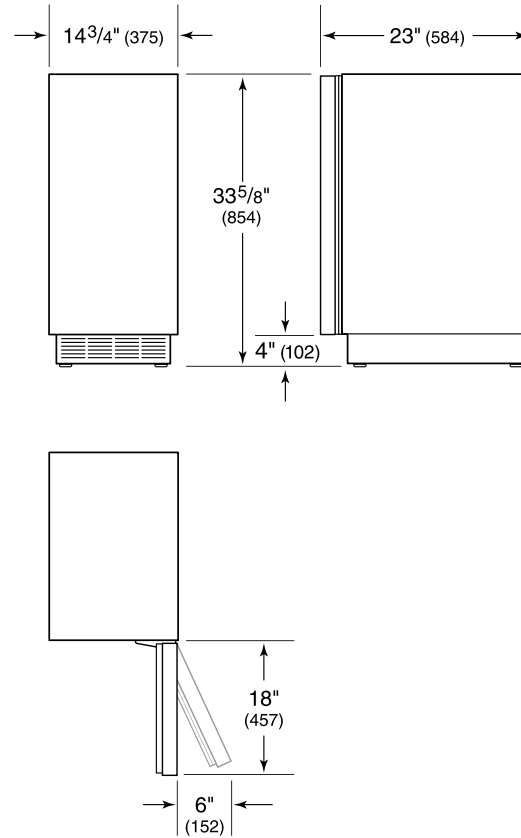
**NOTE:** Dimensions in parenthesis are in millimeters unless otherwise specified

**INTERIOR VIEW**

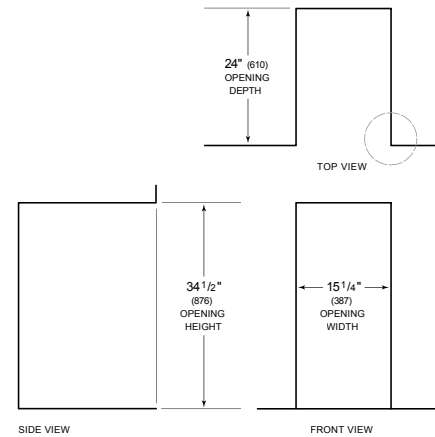


This illustration is intended for interior reference only and may not represent the exterior of the model being specified.

**DIMENSIONS**



**STANDARD INSTALLATION**



**NOTE:** 3 1/2" (89) finished returns will be visible and should be finished to match cabin

