

SUPERCUBE 6000 & 4000

SuperCube 6000

The SuperCube 6000 features a new 9" (23cm) SuperCube Technology woofer, pressure-coupled to two 10" (25cm) ultra-low bass radiators. The total piston area is greater than a 15" diameter woofer but with far greater speed, musicality and control than a single large-diameter woofer could ever deliver—with the added benefit of being compact and easy to place in any living space. The SuperCube 6000 can easily fill the largest domestic spaces with loud, visceral, extended and musical bass, yet it occupies just over a square foot of floor space!

SuperCube 4000

The SuperCube 4000 has all the technology and features of the SuperCube 6000 but with smaller drivers and a bit less power: a new 8" (20cm) SuperCube Technology woofer, pressure-coupled to two 8" (20cm) ultra-low bass radiators. The total piston area is greater than a 12" diameter woofer but with far greater speed, musicality and control than a single large-diameter woofer could ever deliver—and it all fits in an impossibly tiny enclosure that is easy to tuck away out of sight. The SuperCube 4000 can fill most rooms with high-impact, precise bass, yet it occupies less than a square foot of floor space!

Definitive Technology®
The Leader in High-Performance Loudspeakers®

11433 Cronridge Drive, Owings Mills, Maryland 21117, USA
410-363-7148 • www.DefinitiveTech.com

SUPERCUBE 6000 & 4000 SPECS



SuperCube 6000

Dimensions: (H x W x D): 12 $\frac{7}{8}$ " x 12" x 13" (32.5cm x 30.5cm x 33cm). The depth with the optional wireless receiver installed is 14" (35.5cm).

Driver Complement: One 9" (23cm) high-excursion active subwoofer driver, two 10" (25cm) planar low-bass radiators.

Frequency Response: 14Hz–200Hz

Internal Amplifier Power: 1500 Watts

Inputs: One LFE line-level, one pair line-level, one pair 5-way binding posts.

Display: Indicates volume level, crossover frequency, phase, EQ mode settings and night mode on/off.

AC Power: Available in 120V and 240V versions.



SuperCube 4000

Dimensions: (H x W x D): 11 $\frac{7}{8}$ " x 11" x 12" (30.0cm x 27.9cm x 30.3cm). The depth with the optional wireless receiver installed is 13" (32.9cm).

Driver Complement: One 8" high-excursion active subwoofer driver, two 8" planar low-bass radiators.

Frequency Response: 16Hz–200Hz

Internal Amplifier Power: 1200 Watts

Inputs: One LFE line-level, one pair line-level, one pair 5-way binding posts.

Display: Indicates volume level, crossover frequency, phase, EQ mode settings and night mode on/off.

AC Power: Available in 120V and 240V versions.

Introducing the SuperCube® 6000 & SuperCube® 4000 Powered Subwoofers for the Digital Age



Legendary SuperCube Performance: Updated and Improved

- Huge bass from compact enclosures
- 56-bit digital signal processor preamp stage
- All-new Class HD digital tracking amplifiers
- Wireless connectivity (with purchase of optional wireless kit)
- Performance optimization remote control for convenient and precise system adjustment
- High-gloss lacquer finish complements any décor
- Quick, tight accuracy for full music enjoyment
- Explosive bass response for movies
- Disappearing visual display

Huge Bass from Tiny Enclosures

If you want all the high-impact bass excitement of the finest home theater audio systems without consuming a large amount of floor space, then these are the subwoofers for you. The SuperCube 6000 and SuperCube 4000 incorporate the latest digital technologies for bass performance that will leave you slack-jawed in amazement and delight. Definitive's engineers designed in convenience and connectivity features that make them easy to use, versatile and perfectly tailored to your system and room. With the amazing new SuperCubes, you'll enjoy heart-pounding bass that will not fail to astound you, your family, friends and neighbors.

Music Lovers Rejoice

There's more to home entertainment than rocket blasts and explosions—there is also music, be it in the movies you watch or the CDs you enjoy. And for music the quality of a subwoofer's performance is way more important than the quantity. The bass should be tight, precise, and musical. Bass notes should have pitch, not just a dull thud or drone. Definitive Technology was started by and is run today by music fanatics and the very first thing we do to evaluate a subwoofer prototype design is to listen to music. If a subwoofer doesn't do an exemplary job with music reproduction, it's not a Definitive.

SUPERCUBE 6000 & 4000

SUPERCUBE 6000 & 4000

Features in the Service of Superior Performance

The most obvious departures from previous SuperCube models are the addition of a digital display (cleverly hidden under the grille) and a wireless remote. They're much more than aids for couch potatoes; they're serious performance optimizing tools for perfectly blending the subwoofer to your system and room, as well as for adjusting bass levels to account for differences in program material.

In an ideal audio system, the subwoofer works "invisibly," simply adding deep, loud bass without calling attention to itself—blending seamlessly with the main speakers. The key to seamless main speaker/sub blending is finding the perfect crossover frequency, equalization and phase settings for your system and room. And the best place to make those "set and forget" adjustments is from your listening chair via a wireless remote. For everyday use, the remote makes it easy to set just the right amount of bass output to compensate for program material differences. As you make settings adjustments, the display lights up and then turns off a few seconds later, so it's never a visual distraction. You'll get exactly the bass performance you want—effortlessly at the touch of a button.



Class HD Digital Tracking Amplifiers for Clean High Output

The SC6000 and SC4000 feature brawny Class HD digital amplifiers that are optimized for real-world power demands to deliver low distortion and high output. These all-new Definitive amps have a high crest factor to deliver considerably higher power during short, transient peaks such as bass drum kicks and on-screen artillery blasts. You'll enjoy high-volume, high-impact, and low-distortion bass from your favorite action/adventure films and TV shows without sacrificing smooth, tight response.



Cleverly concealed behind grille cloth, the SuperCubes' display appears as you make settings adjustments and then disappears to avoid visual distraction.

Computers in the SuperCube Exert Precise Control

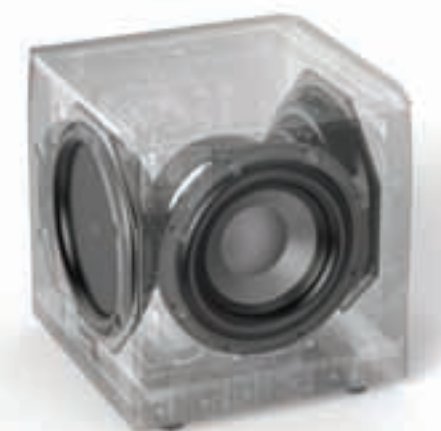
Both SuperCubes have an integrated 56-bit digital signal processor—in essence a mini-computer—that extends and improves bass response. Sophisticated protection circuits tightly monitor and control the system to prevent distortion and damage at ultra-high volume levels. In contrast to simpler one-band compression/limiting circuits used in competing designs, the SuperCubes feature a Multiband Dynamic Range Optimizer (M-DRO) that divides the frequency range into multiple bands. If the M-DRO detects an overdrive condition in the upper bass range, it applies just the right amount of compression to prevent distortion without affecting low bass, thereby vastly reducing audible compression artifacts. SuperCube bass is always tight, highly detailed and distortion-free.

Rock-Solid Cabinets Ensure Pure Low-Distortion Response

Enclosure resonance and vibration can add distortion as well as drain acoustical energy from the system. Definitive's subwoofer enclosures have been specifically engineered to be totally inert and vibration-free to ensure you of absolutely pure sonic reproduction. The front and rear panels are nearly two inches thick and the cabinet incorporates multiple internal braces to ensure total solidity. To top off the extraordinary performance, the SuperCube 2000 is finished in gorgeous piano-gloss black.

A Full Range of Inputs Facilitates Easy Hookup to Any System

The SuperCube 6000 and 4000 can connect to any audio system via your choice of single cable LFE, stereo line-level and speaker wire-level inputs. Or you can choose to go wireless with the optional wireless connectivity kit for the ultimate in wiring convenience.



High-Definition Subwoofer Drivers Deliver Superior Detail and Lightning-Fast Transient Response

The powerful high-definition drivers used in the new SuperCubes were specifically engineered for their task: to deliver rock-solid, low-distortion bass, reaching down to the lowest frequencies, with an outstanding quality of superior speed and precision. The ultra-stiff cones are joined to long-lasting rubber surrounds and long-throw voice coils and spiders. The incredibly rigid cast aluminum baskets are engineered to hold the massive magnet structures and large voice coils in absolute alignment. The high-temperature voice coils are made of aluminum wound with triple-insulated ultra-pure copper wire and baked in epoxy for superior power handling and reliability.

