



6 PERSPEX SB

Highend turntable with 9" Evo tonearm

MSRP 1.599 € (incl. VAT)

- Acrylic plinth
- Sub-chassis made from Corian with magnetic suspension
- Acoustically inert sandwich construction of platter with combination of MDF and vinyl layer as mat
- Inverted main bearing with ceramic ball/plate
- Belt drive with AC motor with DC driven AC generator
- Electronic speed control with 33/45 rpm switching
- Pre-mounted 9" tonearm 9 cc Evolution
- Tonearm bearings with ABEC 7 ballraces
- Connect it Phono E cable with RCA plugs

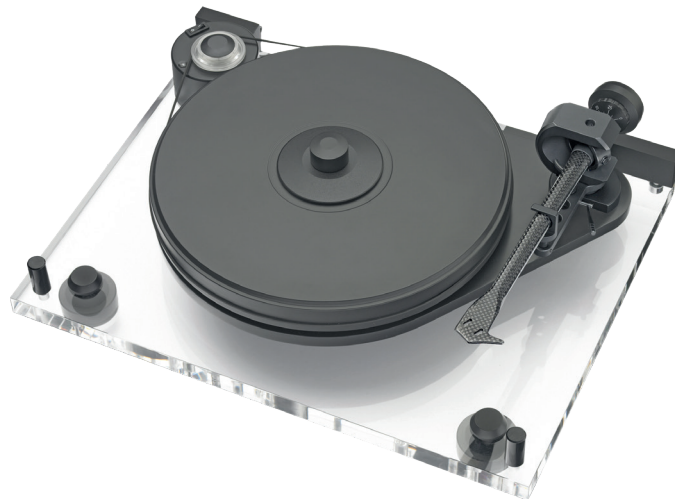
Speed: 33, 45 (electronic speed change)
Drive principle: belt drive
Platter: MDF/vinyl Sandwich (300mm diameter)
Mains bearing: inverted stainless steel with ceramic ball/plate
Wow & flutter: +/-0,1%
Speed drift: +/-0,06%
Signal to noise: 73dB
Tonearm: 9" cc EVO (Carbon)
Effective arm length: 230 mm
Effective arm mass: 8,0 g
Overhang: 18mm
Tracking force: 10 - 35mN
Supplied counterweights: 5 - 7,5gr / 7 - 10gr / 9 - 11gr / 10 - 14gr
External power supply: 15 volts DC / 800mA
Power connection: 110/120 or 230/240 Volt - 50 or 60 Hz
Power consumption: 6 watts max / < 0,3 watts standby
Dimensions: 460 x 183 x 365mm (WxHxD)
Weight: 11,0 kg net

6 Perspex SB: The ultimate subchassis turntable for the 21st century

The transparent acrylic plinth stands on three individually height-adjustable TPE-damped aluminium cones and carries the motor and the sub-chassis. The sub-chassis, made of Corian, rests on three magnetic fields.

A magnetic subchassis suspension system avoids parasitic noise normally caused by conventional spring mechanism. A supplied spirit level allows easy adjustment of the sub-chassis. A quiet running AC motor unit drives the platter's outside edge via a belt. It does incorporate an advanced DC-driven motor control, that ensures perfect speed stability and electronic speed change.

The resonance-optimised platter is a sandwich construction utilising a fine-balanced medium density fibre platter and a 4mm thick flat-ground layer of vinyl and a screw-down metal record clamp. It runs on an inverted bearing with stainless-steel axle carrying a ceramic ball/plate bearing. The headshell and armtube of high-end tonearm 9cc Evolution are fashioned from a single



piece of carbon-fibre. A conical armtube avoids standing wave reflections. Inverted tonearm bearing comprises four hardened stainless tips in ABEC 7 spec ballraces. Supplied counterweights are suitable for cartridges weighing between 5 - 7,5g / 7 - 10g / 9 - 11g or 10 - 14g.

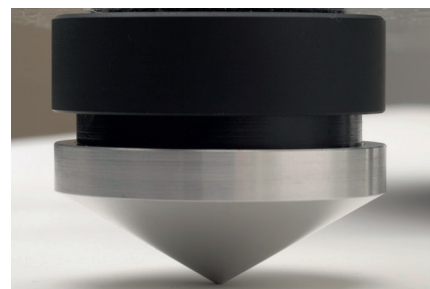
A top-grade connection cable Pro-Ject Connect it E iwith RCA connectors is supplied (123cm). A dust cover is included.



freestanding engine



carbon fibre tonearm: Non-resonant tube with low friction bearings



conical decoupling feet