



CPC120



ULTRA-DISCRETE AUDIO

With a driver of only 50mm (2 inches) in diameter, Monitor Audio's CPC120 is a loudspeaker that offers extraordinary sound quality for a truly innovative application. Its precision-engineered micro-design allows it to offer a surprisingly coherent and detailed performance from a standard halogen down-lighter cut out.

The secret to the design's success is that in spite of its size, and unlike many other in-ceiling speakers, it provides a dedicated enclosure for the driver, giving improved quality and consistency to midrange frequencies wherever the CPC120 is installed.

Although miniaturised, the CPC120's driver utilises technologies found across other Monitor Audio loudspeakers, allowing the CPC120 to blend sonically with Monitor Audio systems of floor, stand, in-ceiling and in-wall varieties for a perfectly-optimised sound anywhere in the home.

FEATURES AND BENEFITS

- Quick, easy and discreet flush-fitment to walls or ceilings.
- 2" full range micro-driver utilising a 1" long throw voice coil and features a die-cast aluminium chassis.
- CP (Controlled Performance), sealed rear enclosures for improved sonic consistency regardless of interior wall or ceiling construction.
- Conventional fitment clips offer quick and simple installation.



The CPC120 has a thermal protection device in it. This helps to protect the drive unit and tweeter from permanent damage. If the speaker stops working after a long period of play, turn off the source for about 10 minutes, and then try it again.

SPECIFICATIONS

Frequency Response	Nominal Impedance	Sensitivity	Maximum SPL	Power Handling (RMS)	Recommended Amp Requirements	Drive Unit Complement	Cable Connection
100Hz - 20KHz	8 Ohms	85dB	101.9dBA	20W <small>50W When using crossover set at 200Hz</small>	5 - 20W <small>5 - 50W When using crossover set at 200Hz</small>	1 x 50mm (2") Full Range Micro - Driver	Gold Plated 'Push' Type Terminals

Overall Diameter	Cutout Diameter	Overall Depth (inc Terminals)	Mounting Depth	Fixing Type	Finishes	Construction Material	Weight Each
80mm (3 1/8")	65mm (2 1/2")	95.75mm (3 3/4")	92mm (3 5/8")	Halogen Light Style Spring Clip	Chrome, White, Brushed Steel, Brass	Frame: Steel Rear Enclosure: Aluminium	0.19Kg (0.38lbs)

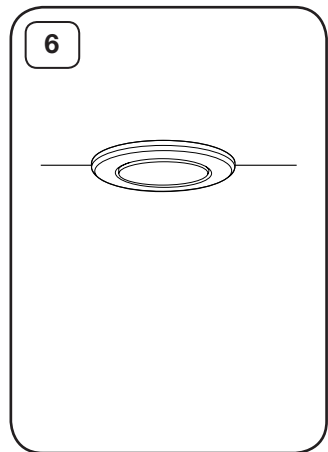
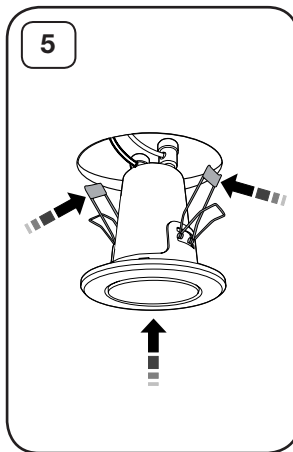
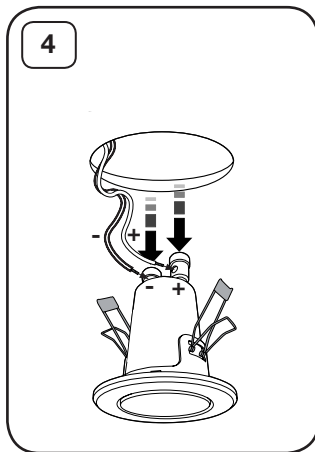
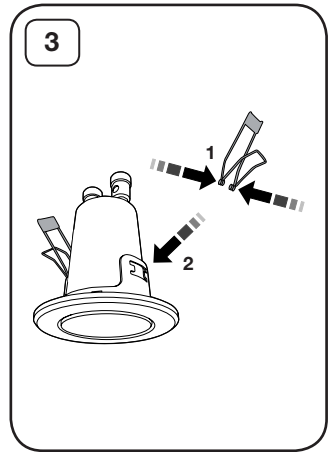
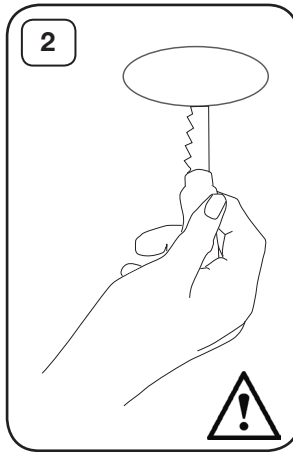
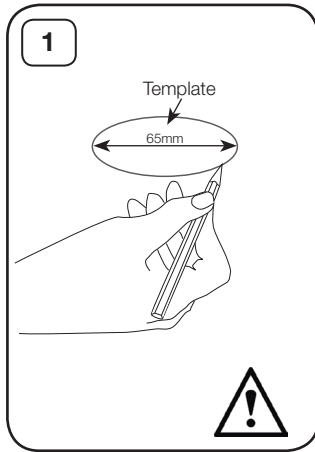




CAUTION: The CPC120 can only be fixed into plasterboard (dry-lined) or suspended ceilings/ walls upto 45mm (1 3/4") thick. For safety reasons, if you are unsure of your ability to provide a secure and safe fixing, do not attempt to fix these speakers, please obtain the services of a competent and qualified trades person.



CAUTION: Ensure that there are no water pipes or electricity cables running behind where the hole will be cut and where the loudspeaker will be placed. Work from secure steps and avoid trailing wires.



Monitor Audio Ltd.
Unit 2, 24 Brook Road
Rayleigh, Essex
SS6 7XJ
England

Tel: +44 (0)1268 740580
Fax: +44 (0)1268 740589

Email: info@monitoraudio.co.uk
Web: www.monitoraudio.co.uk

© Monitor Audio 2009

