

Version	FNMAS28W6SS-1 Built-in 28" (72 cm) - Steel - 600 CFM
Design	Falmecc Lab
Collection	Silence - NRS

FEATURES AND PROPERTIES

Materials/Finishes	Scotch brite stainless steel (AISI 304)
Technology	NRS technology for a quieter kitchen
Control	Touch control Remote control (optional)
Ducting type	External ducting/Recirculating
Installation type	Insert
Lighting	Dynamic Light (2700K - 5600K) Strip LED
Filters	Professional baffle filters, removable and dishwasher safe Charcoal filter (optional)
Dimensions	28 in
Notes	Recommended mounting height from cooking surface to hood bottom: 24" - 35" Availability Carbon.Zeo filter KACL.1039 for hoods produced from Sept. 2024 Led 2x1,2 W - 3200K until Oct.2024



Photograph is for information purposes only. May not correspond to the selected version

ELECTRICAL CONNECTION AND CONSUMPTION

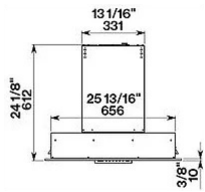
Maximum consumption	340 W
Voltage/Frequency	110-120V 60Hz
Connection type	Hood comes standard with Nema 5-15P power cord

BLOWER PERFORMANCE

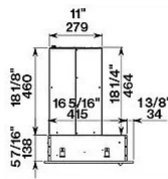
Motor	600 CFM
Minimum sound level	
Maximum sound level	0 dB (A)re1pW I.E.C. 60704-2-13

WEIGHTS AND DIMENSIONS

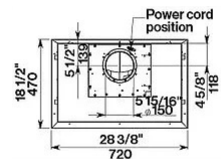
Gross weight	73 lbs
Net weight	56 lbs
Volume	17 ft
Packaging dimensions	L 41 x H 25 x D30 in



Frontal view



Side view



Top view

OPTIONAL ACCESSORIES

Code	Description
105080053	Remote control
KACL.1039	Carbon.Zeo Microtech renewable filter