

# SPPS76TM-1EL

## 30" Built-In Speed Oven



### AVAILABLE FINISHES / COLOUR OPTIONS

#### SPPS76TM-1EL

Black Glass with Stainless Steel Trim

### KEY FEATURES

#### Save Time In The Kitchen

P&C Built-in Speed Ovens are game-changers when it comes to saving time in the kitchen. With both powerful microwave and convection cooking technology, these high-speed ovens can cook quickly and evenly, without sacrificing flavour.

#### Patented and Reversible Ceramic Turntable

A durable ceramic turntable provides an even heat distribution and can be turned clockwise or counterclockwise.

#### Spacious 1.6 Cu. Ft. Interior Offers Space For Large Dishes

The generous capacity of 1.6 cubic feet caters to various dish sizes, making this appliance suitable for a wide range of cooking needs.

#### Sensor Cooking

Take the guesswork out of cooking with this special sensor mode that controls humidity and automatically adjusts the cooking level and time.

#### Three Combi Modes

Combines the Microwave operation with Convection or Broil heating modes, allowing you to cook even faster.

#### Integrated Air Fryer Functionality

Elevate your cooking game with the integrated Air Fryer, allowing for healthier and flavorful dishes with less oil, adding a new dimension to your culinary repertoire.

#### Precise Control

Enjoy an easy-to-use crystal clear, UI interface design, dot matrix scrolling display.

#### Dedicated Baking Rack

An included microwave rack offers maximum convection performance. The guide rail and the oven are integrated into one, which is easy to clean.

#### Installed Flush With Your Cabinets

Appliances are completely flush with your cabinetry, so they blend in beautifully and never protrude.

#### Accessories

Included Turntable (1), Baking Rack (1), Ceramic Plate (1).



Spacious Capacity



LCD Touch Control



Combi Mode



Sensor Cook



Air Fry Function



Flush Installation

### GENERAL PROPERTIES

Type	Speed Oven – Combination oven with Hot Air and Microwave
Style	Built-In
Colour/Finish	Black Glass/Stainless Steel Trim
Handle	Stainless Steel Handle
Control Type	Touch Control
Display Type	Digital Display
Number of Rack Positions	1
Oven Interior	Stainless Steel Interior
Oven Door	Down-fold

### CAPACITY

Oven Interior Capacity	1.6 Cu. Ft. (45L) Capacity
------------------------	----------------------------

### FEATURES

Fan Convection	Yes
Timer / Clock / Time Cooking	Yes
Power Levels	10
Start/+ 30sec.	Yes-add 30 seconds
Oven Interior Light	Halogen Lighting (Front Ceiling)
Child Lock/Safety Lock	Yes

### OVEN FUNCTIONS

Microwave Modes	Microwave, Popcorn, Defrost, Sensor Cook, Sensor Reheat, Beverage Centre, Soften/Melt, Simmer
Oven Modes	Bake, Convection, Bake, Broil, Convection Roast, Air Fry, Pizza, Warm, Proof, Sabbath Mode

### TECHNICAL DETAILS

Electrical Requirements	120V~60Hz~20AMP
Rated Input (Microwave)	1750W
Rated Output (Microwave)	950W
Grill	1700W
Convection	1700W
Bake	600W
Lightbulb	DC12V 2W
Power Cord	*Supplied with a 5ft 120V/20A cord with plug (not hardwired), Plug directly into NEMA 5-20R Receptacle.

### DIMENSIONS & WEIGHT

Product Dimensions W / H / D (In/mm)	29 <sup>13/16"</sup> / 18 <sup>11/16"</sup> / 21 <sup>5/8"</sup> (758mm / 475mm / 549mm)
Cut Out Dimensions W / H / D (In/mm)	30" / 18 <sup>3/4"</sup> / 24" (762mm / 476mm / 610mm)
Gross Weight	113 lbs (51.3kg)
Net Weight	97 lbs (45kg)

### WARRANTY

Parts & Labour	2 Years
----------------	---------

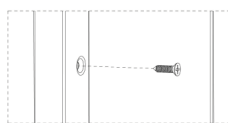
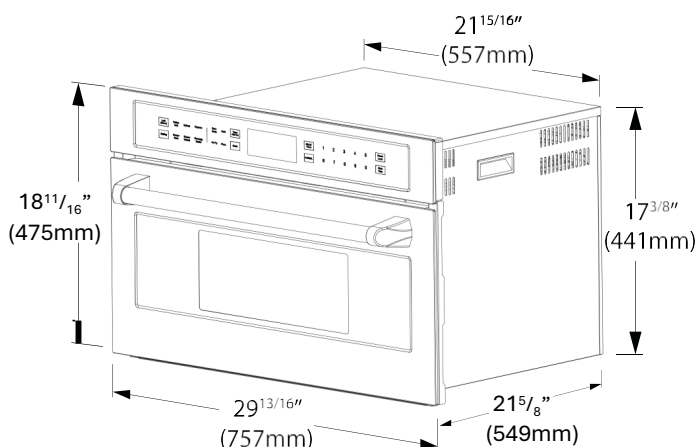
# SPPS76TM-1EL



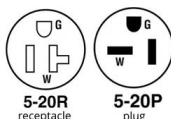
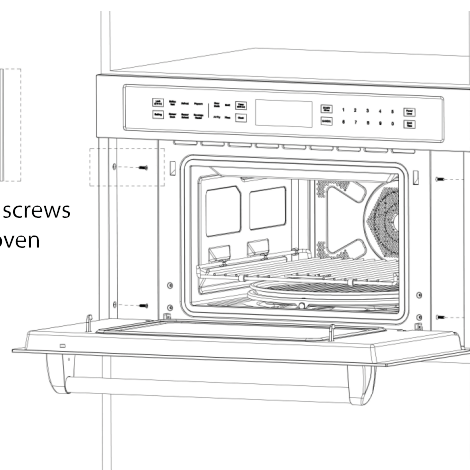
## Installation Details

### PRODUCT DIMENSIONS

**Width:** 29 <sup>13</sup>/<sub>16</sub>" (758mm) / **Height:** 18 <sup>11</sup>/<sub>16</sub>" (475mm) / **Depth:** 21 <sup>5</sup>/<sub>8</sub>" (549mm)

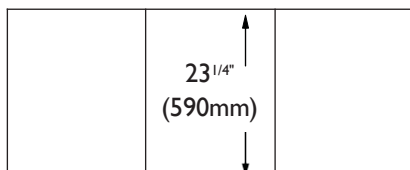


4\* wood mounting screws to mount the wall oven

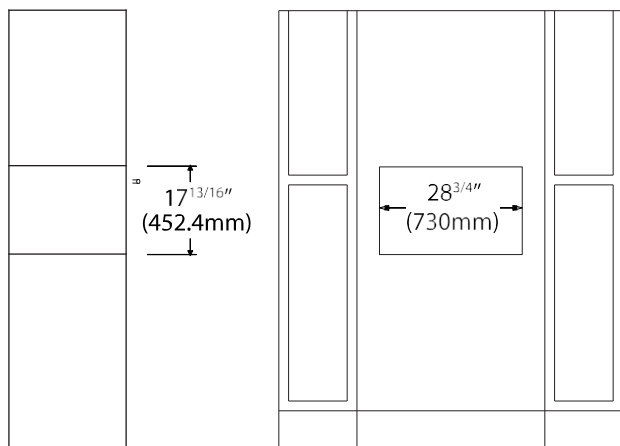


This oven comes with 120V/20A cord with plug. Requires receptacle NEMA 5-20R

### Standard Installation



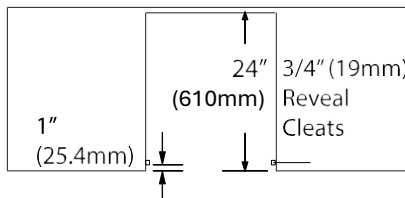
Top view



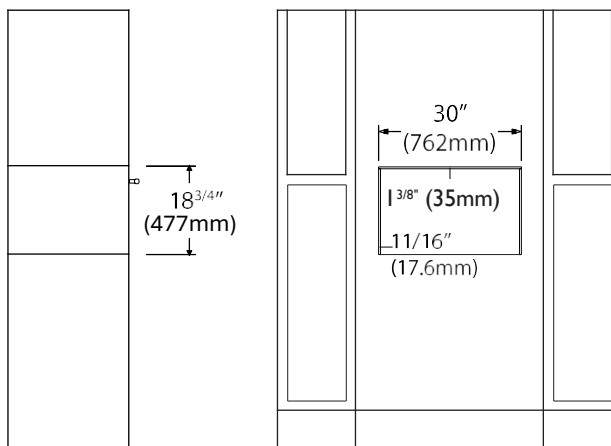
Side view

Front view

### Flush Installation



Top view



Side view

Front view

### CUTOUT DIMENSIONS - STANDARD INSTALLATION

**Cutout Width:** 28 <sup>3</sup>/<sub>4</sub>" (730mm)

**Cutout Height:** 17 <sup>13</sup>/<sub>16</sub>" (452.4mm)

**Cutout Depth:** 23 <sup>1</sup>/<sub>4</sub>" (590mm)

### CUTOUT DIMENSIONS - FLUSH INSTALLATION

**Cutout Width:** 30" (762mm)

**Cutout Height:** 18 <sup>3</sup>/<sub>4</sub>" (477mm) **Cutout Depth:** 24" (610mm)

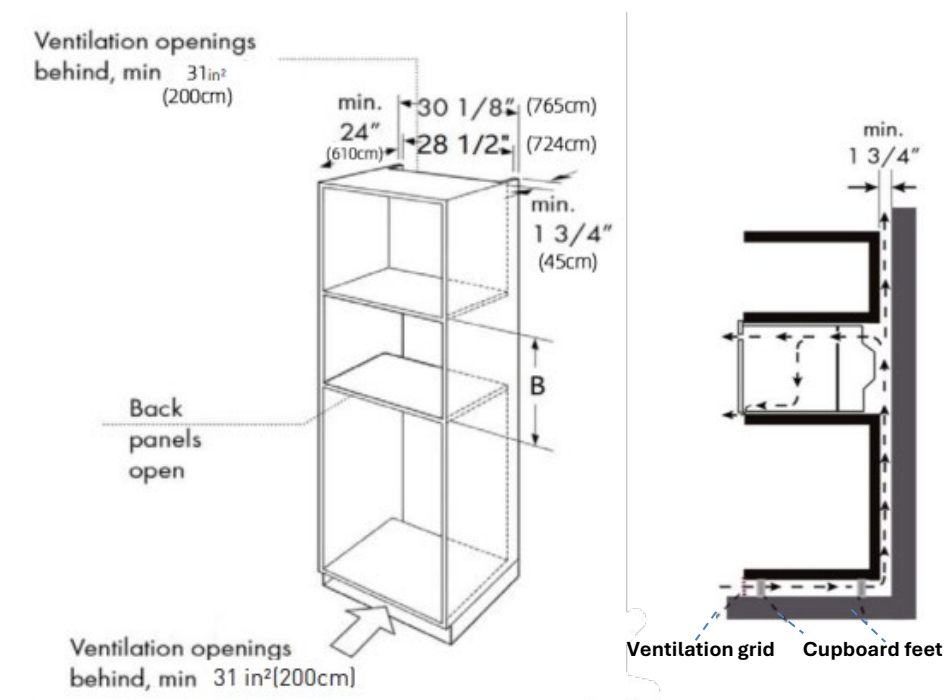
### VENTILATION / AIR FLOW

- This appliance is intended to be installed in a kitchen cabinet.
- The fitted cabinet must not have a back wall behind the appliance.
- A gap of at least  $1\frac{3}{4}$ " (45mm) must be maintained between the wall and the base or back panel of the unit above.
- The cabinet must have a ventilation opening of  $31\text{in}^2$  ( $200\text{cm}^2$ ) in the base. To achieve this cut an opening in the base panel and fit a ventilation grill.
- Cabinet base ventilation grill available, item 'Vent Grill'.

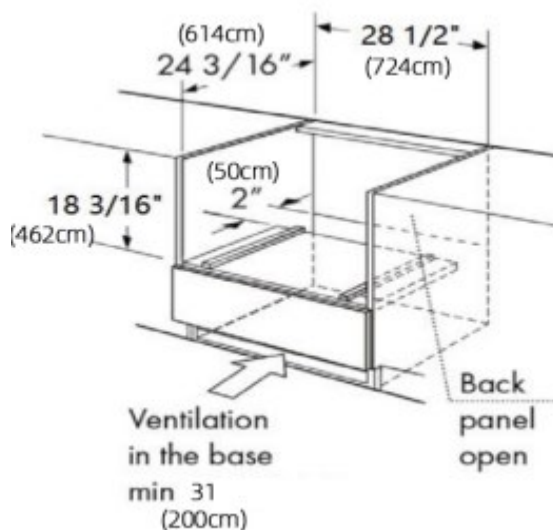
Note: There should be a minimum  $\frac{1}{16}$ " (1.5mm) gap above the oven.

Note: The vent should not be directly against the enclosed space, such as ceiling or wall.

#### Wall Cabinet



#### Under Counter / Island



Other Product Downloads Available at  
[porterandcharles.ca](http://porterandcharles.ca)



#### **WARRANTY INFORMATION**

Porter & Charles Appliances are designed and manufactured to the highest standards.  
Each appliance is covered by a comprehensive 2-year parts and labour warranty.  
Refer to product warranty policy for complete terms and conditions.

#### **FOR PARTS & SERVICE**

Euro-Parts & Service  
39822 Belgrave Road, Belgrave, ON. N0G 1E0 1 866 722 2262  
[www.euro-parts.ca](http://www.euro-parts.ca) • [parts@euro-parts.ca](mailto:parts@euro-parts.ca) • [service@euro-parts.ca](mailto:service@euro-parts.ca)

Porter & Charles appliances are imported and distributed in North America by Euro-Line Appliances Inc. For more information, please visit one of our showrooms or [www.ela.ca](http://www.ela.ca)

#### **EURO-LINE APPLIANCES INC.**

871 Cranberry Court, Oakville,  
ON L6L 6J7 Canada  
905.829.3980  
1-800.421.6332  
[info@ela.ca](mailto:info@ela.ca)

#### **EURO-LINE APPLIANCES INC.**

101-1014 Homer Street, Vancouver,  
BC V6B 2W9, Canada  
604.235.3980  
1-855.ELA.WEST (352.9378)  
[infowest@ela.ca](mailto:infowest@ela.ca)