



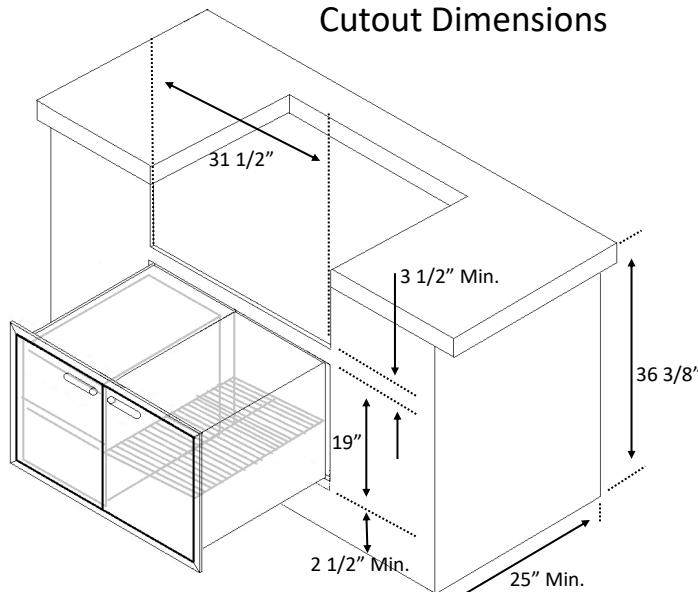
LYNX SEALED PANTRY

LPA36-4

Introduction:

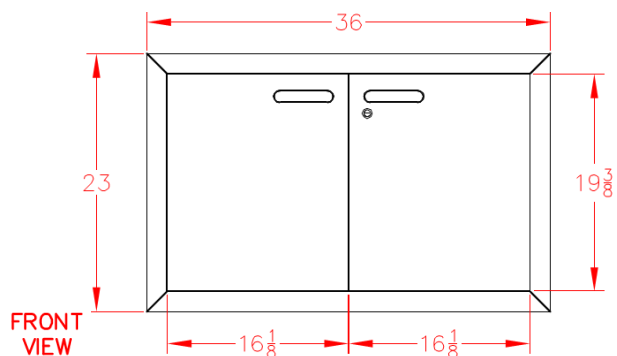
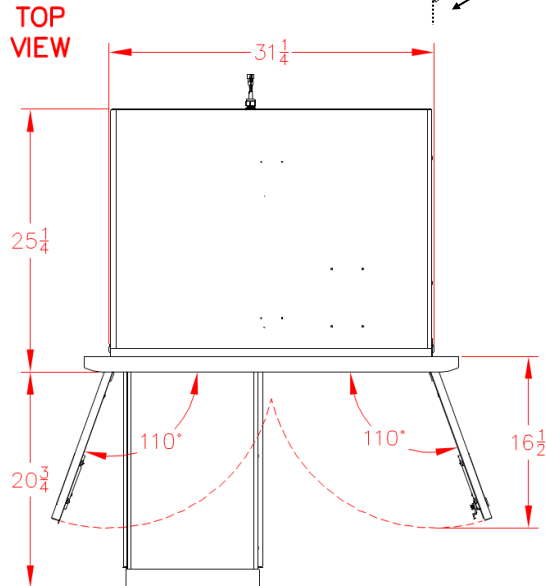
This storage accessory is designed with interior lighting. The stainless steel body is rigidly constructed and has professionally polished stainless steel handles.

Cutout Dimensions

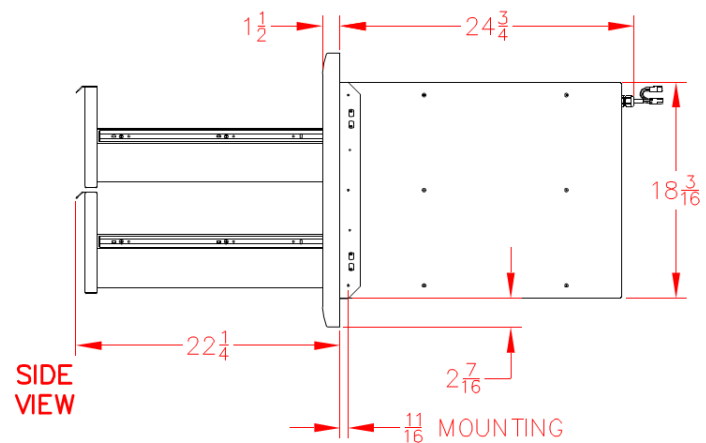
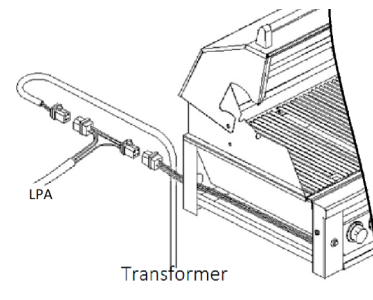


- Part of the Ventana Collection, the finest storage solutions for the outdoor kitchen
- Magnetic gasket insures tight seal which protects cookware, dry goods and more from pests and weather
- Full extension glide out drawers
- Adjustable wire shelf
- Illuminated drawers
- Storage space is 31" x 18" x 23"
- Easy to clean
- No crevice for insect nest
- Sleek contemporary look
- A 4-pin electrical connector is provided to connect the Pantry to a Lynx grill.

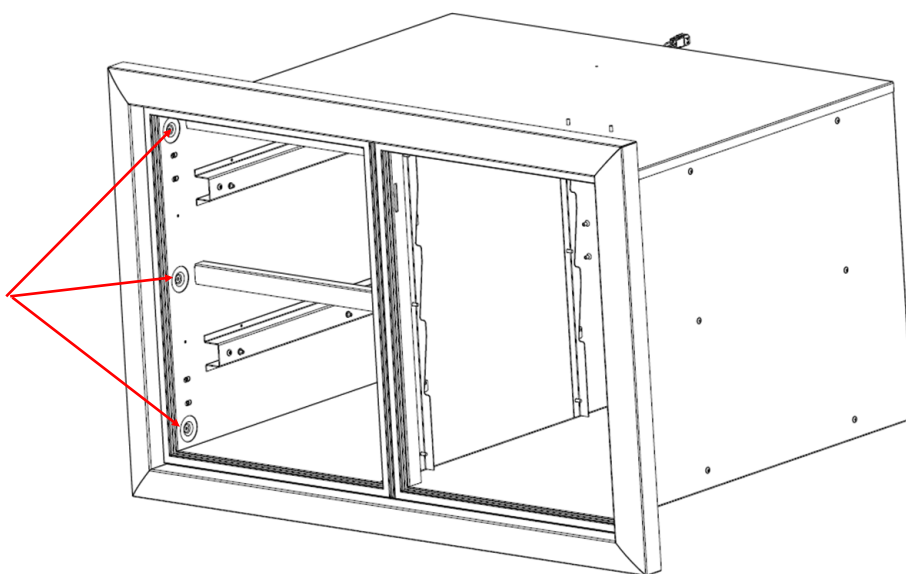
*may require Lynx Accessory Switch Kit for power supply (LASK)



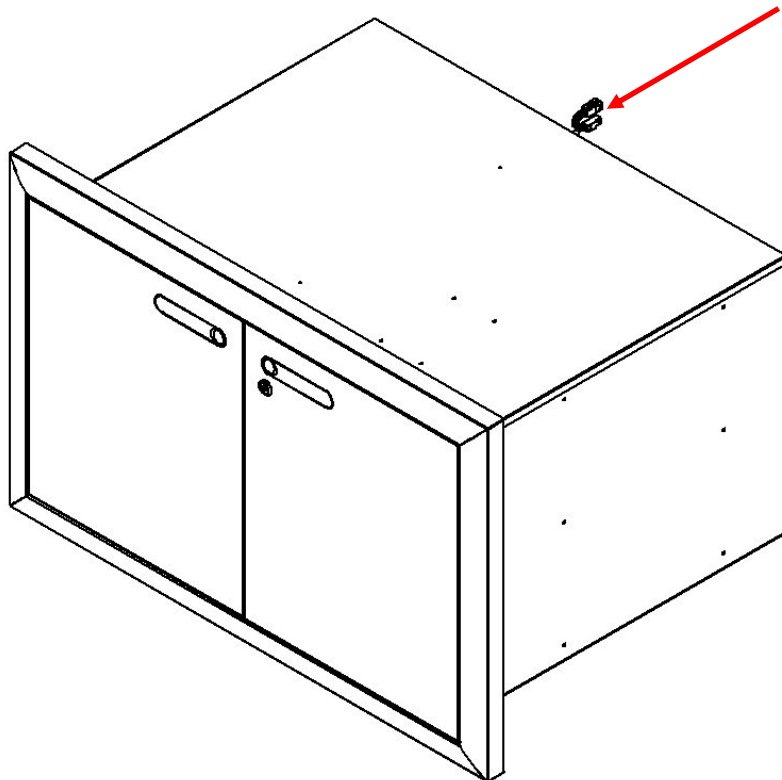
Electrical Connection



After installation, secure with supplied screws, 3 on each side.



Power cable (5 feet)



REVERSAL OF DOOR HANDLE ORIENTATION

TO CHANGE THE ORIENTATION OF HANDLES , PLEASE REFER TO THE DIAGRAMS BELOW.

