

# STACKING KIT INSTALLATION INSTRUCTIONS (WASHER & DRYER ONLY)

**CAUTION** : Two people are required to lift the dryer on to the washer.

**WARNING** : These washer and dryer are not suitable for mobile home or RV installation.

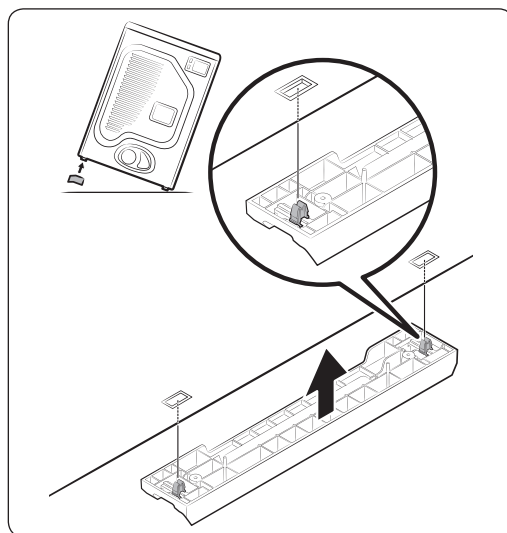
## Dryer

**STEP 1** Have two persons place the dryer on a non-slippery floor. Then, have one person tilt the dryer to the side. Do not lay the dryer down. The dryer may be scratched.

**STEP 2-1 SKK-7\*, SKK-8\***: Check if the legs are tightened up, and then insert the stacking support guides in the rectangular holes of the dryer's base until you hear a clicking sound. You don't need to remove the legs.

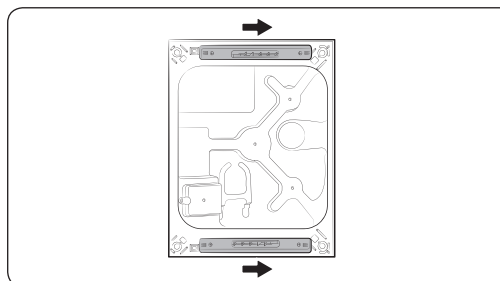
**STEP 2-2 SKK-BB**: Disassemble legs, and Snap the stacking support guides into the rectangular holes in the dryer base and secure each with two(2) screws Phillips-pan head (6006-001174)

**STEP 3** Repeat the same step above on the other side.



**STEP 4** Bottom view of the dryer after assembling the Stacking Support Guides to the dryer base.

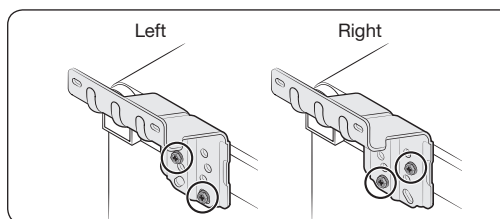
\* Use a stacking-kit compatible with the purchased model.



## Washer (Stacking kit: SKK-7\*, SKK-8\*, for 27" models)

**CAUTION** : You need to use the proper rear bracket depending on your washer model. (There are 2 different rear brackets : DC61-04160A, DC61-04955A)

**5-1) DC61-04160A : WF5\*K\*\*, WF4\*H\*\*, WF4\*K\*\*, WF4\*M\*\*, WF4\*N\*\*, WF18H\*\*, WF20H\*\*, WF20M\*\*, WF22H\*\*, WF22K\*\*, WF15K\*\*, WF16J65\*\***

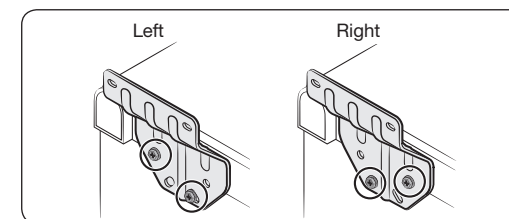


DO NOT TIGHTEN SCREWS COMPLETELY

**STEP 5-1** LOOSELY assemble the Rear Brackets (DC61-04160A) to the washer as shown below. Use two (2) Screws-Hex Head (6002-001431) with washers (DC60-00044A) in each washing machine Top Cover tail, per bracket.

\* Before installing the rear bracket, loosen two screws (Screw-Hex) on the Cover Top that is secured to the frame.

**5-2) DC61-04955A : WF5\*R\*\*, WF4\*R\*\*, WF5\*T\*\*, WF4\*T\*\*, WF2\*R\*\*, WF1\*R\*\*, WF2\*T\*\*, WF1\*T\*\***



DO NOT TIGHTEN SCREWS COMPLETELY

**STEP 5-2** LOOSELY assemble the Rear Brackets (DC61-04955A) to the washer as shown below. Use two (2) Screws-Hex Head (6002-001431) with washers (DC60-00044A) in each washing machine Top Cover tail, per bracket.

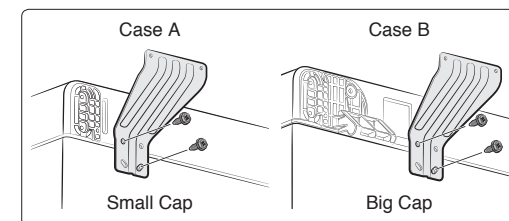
\* Before installing the rear bracket, loosen two screws (Screw-Hex) on the Cover Top that is secured to the frame.

## Washer (Stacking kit: SKK-BB, for 30" models)

**WF56H\*\***

**STEP 5-3** Loosely assemble the Rear Bracket (DC61-03846A) to the washer as shown above in either case A or Case B, Use (2) Screws-Hex Head (6009-001476) with washers (DC60-00044A) to the each hole of Cover Top and Frame.

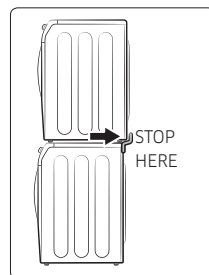
\* Case A only : Before installing the rear bracket, loosen two screws (Screw-Hex) on the Cover Top that is secured to the frame.



DC68-01052R-11

# STACKING KIT INSTALLATION INSTRUCTIONS (WASHER & DRYER ONLY)

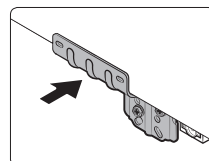
- STEP 6** Lift and position dryer into the position on the washer shown above, slide dryer backwards to make contact with rear brackets.



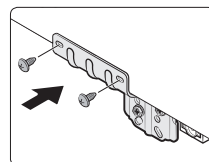
**CAUTION :** To prevent noise, check the followings.

- Make sure the washer is level.
- Make sure the dryer's leveling legs are tightened up. (Stacking kit: SKK-7\*, SKK-8\*, for 27" models)

- STEP 7** Align rear brackets with mounting holes on the rear of dryer as shown above.

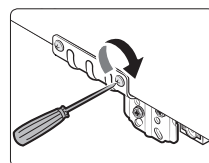


- STEP 8** LOOSELY assemble rear brackets to the back of the dryer using two (2) Screws- Phillips Pan Head (6006-001174) for each rear bracket as shown above.

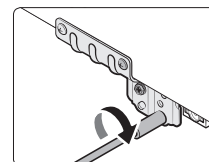


Extra screws may be included with this kit. Tighten screws on the dryer side of the rear bracket.

- STEP 9**

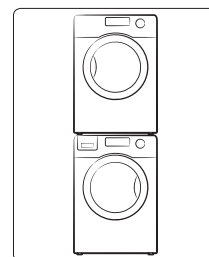


- STEP 10** Tighten screws on the washer side of the rear bracket.



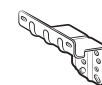
- \* DO NOT REVERSE THE ORDER OF STEPS 9 & 10.

- STEP 11** Stacked Unit is now ready to be installed. Refer to detailed installation instructions packed with products.



## Stacking kit components

Stacking Support Guides (2)	SKK-7*, SKK-8* - DC61-04159A
Rear Bracket (2) (WF5*K**, WF4*H**, WF4*K**, WF4*M**, WF4*N**, WF18H**, WF20H**, WF20M**, WF22H**, WF22K**, WF15K**, WF16J65**)	SKK-7*, SKK-8* - DC61-04160A
Rear Bracket (2) (WF5*R**, WF4*R**, WF5*T**, WF4*T**)	SKK-7*, SKK-8* - DC61-04955A
Stacking Support Guides (2)	SKK-BB - DC61-01480B
Rear Bracket (2) (WF56H**)	SKK-BB - DC61-03846A
Screws-Hex Head (4)	SKK-BB - 6009-001476
	SKK-7*, SKK-8* - 6002-001431
Screws Phillips-Pan Head (8)	- 6006-001174
Washer (4)	- DC60-00044A



Rear Bracket  
(WF5\*K\*\*, WF4\*H\*\*, WF4\*K\*\*, WF4\*M\*\*, WF4\*N\*\*, WF18H\*\*, WF20H\*\*, WF20M\*\*, WF22H\*\*, WF22K\*\*, WF15K\*\*, WF16J65\*\*)



Rear Bracket  
(WF56H\*\*)



Rear Bracket  
(WF5\*R\*\*, WF4\*R\*\*, WF5\*T\*\*, WF4\*T\*\*)



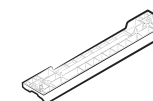
Screw-Hex Head  
SKK-BB (M5, L10)  
SKK-7\*, SKK-8\* (M5, L16)



Screw Phillips-Pan Head  
(M4, L12)



Washer (ID5, OD10)



Stacking Support Guide

**SAMSUNG**