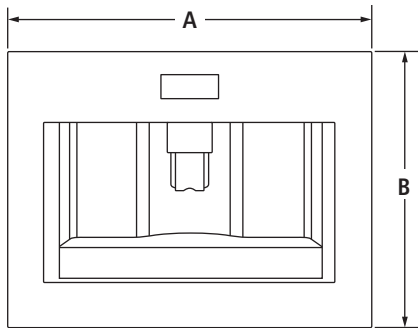


BUILT-IN COFFEE SYSTEM

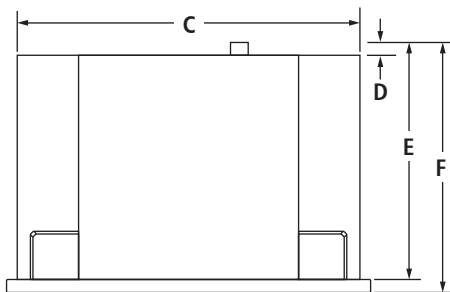
JBC7624BS – 23³/₈" x 18" x 15¹⁵/₁₆"

PRODUCT DIMENSIONS

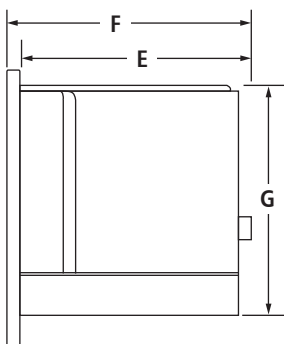


FRONT VIEW

MODEL #		JBC7624BS	
		in	cm
A	Overall width	23 ³ / ₈	59.5
B	Overall height	18	45.5
C	Width of recessed coffee system	20 ¹ / ₁₆	52.8
D	Depth of electrical plug	1 ¹ / ₁₆	1.9
E	Depth of recessed coffee system including electrical plug	15 ¹ / ₄	38.0
F	Overall depth including electrical plug	15 ¹⁵ / ₁₆	40.1
G	Height of recessed coffee system	14 ⁹ / ₁₆	37.2



TOP VIEW

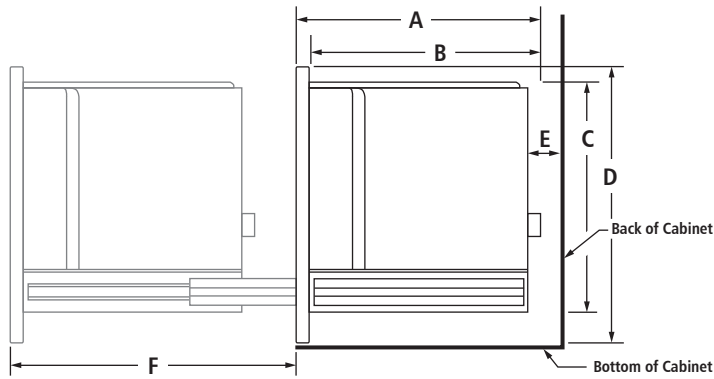


SIDE VIEW

BUILT-IN COFFEE SYSTEM

JBC7624BS – 23³/₈" x 18" x 15¹⁵/₁₆"

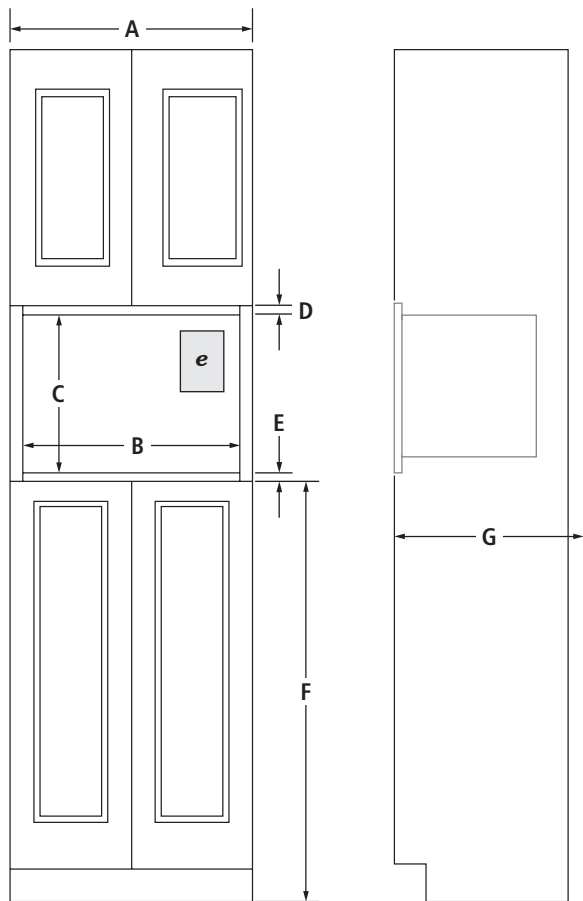
DIMENSIONS AS INSTALLED



SIDE VIEW

MODEL #		JBC7624BS	
		in	cm
A	Overall depth including electrical plug	15 ¹⁵ / ₁₆	40.1
B	Depth of recessed coffee system including electrical plug	15 ¹ / ₄	38.0
C	Height of recessed coffee system	14 ⁹ / ₁₆	37.2
D	Overall height	18	45.5
E	Width of conduit channel (min.)	1 ³ / ₄	4.5
F	Depth of coffee system with runners fully extended	17 ⁵ / ₈	44.8

OPENING/CLEARANCE DIMENSIONS



FRONT VIEW

SIDE VIEW

MODEL #		JBC7624BS	
		in	cm
A	Width of cabinet (min.)	24	61.0
B	Width of cutout	22	56.0
C	Height of cutout (min.)	17 ¹³ / ₁₆	45.0
D	Top of cutout to bottom of upper cabinet door (min.)	1 ¹ / ₈	0.3
E	Bottom of cutout to top of lower cabinet door (min.)	1 ¹ / ₈	0.3
F	Bottom of cutout to floor (min.)	33 ⁷ / ₁₆	85.0
G	Depth of cutout including conduit channel (min.)	21 ⁷ / ₁₆	54.5
e	Recommended junction box location		

ELECTRICAL REQUIREMENTS

A 120 Volt, 60 Hz, AC only 15-amp fused, grounded electrical circuit is required. A time-delayed fuse or dedicated circuit is recommended. A grounded 3-prong outlet should be located in the back of the cabinet. Do not use an extension cord.

CABINET REQUIREMENTS

Support structure must be able to support 30.0 lbs. (13.6 kg) including coffee system and contents. Make sure cabinet is securely attached to the wall.