

UC-1510

FEATURES

- Controls temperature within one degree of setpoint
- Produces up to 50 pounds of octagonal-shaped ice per day; stores 25 pounds at a time
- Produces ice in temperatures up to 100 degrees Fahrenheit
- Locks in cold air to ensure freshness with magnetic door seals
- Set the two, four, and eight-hour delay to temporarily stop ice production, or pause ice production at the same time every day with auto-delay
- Holds built-in ice scoop neatly in the door so it is there when you need it
- Accessory stainless-steel panel with pro handle matches perfectly with other outdoor Sub-Zero and Wolf products.

ACCESSORIES

- Cleaner For Undercounter Ice Maker
- Filter For Undercounter Ice Maker
- Sanitizer For Undercounter Ice Maker
- Stainless Steel Kickplate
- 15" Outdoor Stainless Steel Door Panel with Pro Handle

Accessories are available through an authorized dealer.
For local dealer information, visit subzero-wolf.com/locator.



PRODUCT DETAILS

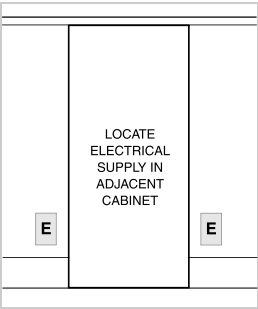
FREEZER

- LED lighting
- Built-in ice scoop

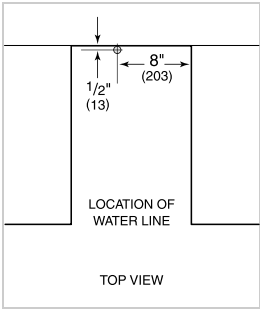
PRODUCT SPECIFICATIONS

Model	UC-15IO
Dimensions	14 3/4"W x 33 5/8"H x 23"D
Weight	123 lbs
Electrical Supply	115 VAC, 60 Hz
Electrical Service	15 amp dedicated circuit
Plumbing Supply	1/4" OD copper, braided stainless steel or PEX tubing
Plumbing Pressure	20–80 psi
Receptacle	3-prong grounding-type, GFCI

ELECTRICAL



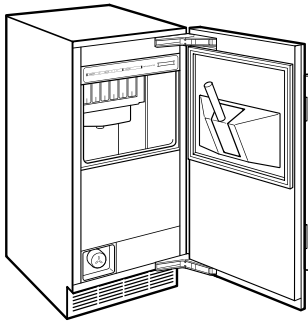
PLUMBING



ICE MAKER DRAIN Ice maker models can be ordered with or without a drain pump. Models without a pump will drain water by gravity. A drain must be provided for all models.

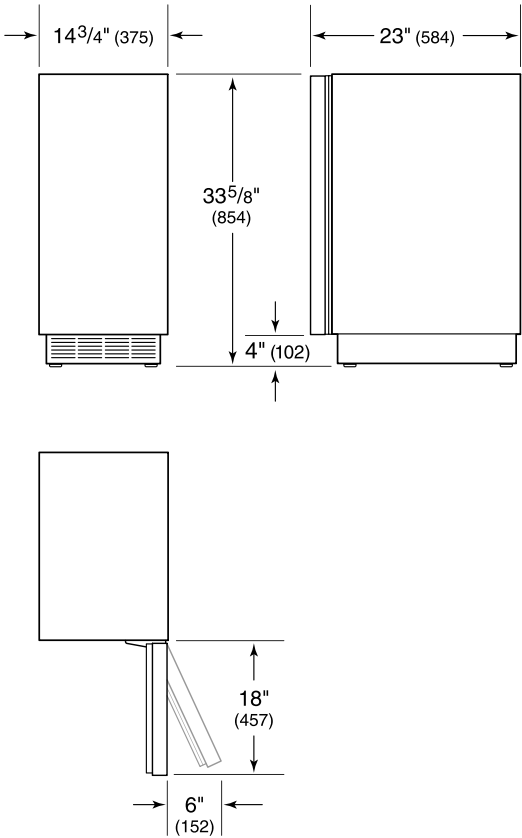
NOTE: Dimensions in parenthesis are in millimeters unless otherwise specified

INTERIOR VIEW

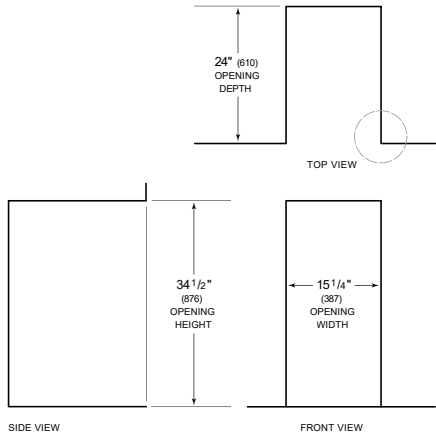


This illustration is intended for interior reference only and may not represent the exterior of the model being specified.

DIMENSIONS



STANDARD INSTALLATION



NOTE: 3 1/2" (89) finished returns will be visible and should be finished to match cabin

