

# Detroit

User Manual

VRH-DETROIT-30GS



**Vesta**

Simple Kitchen Solutions

# Table of Contents

Important Safety Notice	3-5
Important Safety Notice	6-7
Opening size and Tools needed	8
Parts supplied	9
Venting requirements	10
Installation Instructions	11-14
Operation	15-16
Trouble shooting	17
Wiring diagram and specifications	18
Use and care information	19
Maintenance	20
Cleaning filters and replace LED light	21
Warranty	22-23
Disclaimer	24
Contact	25

# Important Safety Notice

## READ ALL INSTRUCTIONS BEFORE INSTALLING AND OPERATING THIS APPLIANCE

- The installation in this manual is intended for qualified installers, service technicians or persons with similar qualified background. Installation and electrical wiring must be done by qualified professionals and in accordance with all applicable codes and standards, including fire-rated construction.
- DO NOT attempt to install this appliance yourself. Injury could result from installing the unit due to lack of appropriate electrical and technical background.
- Range hood may have very sharp edges; please wear protective gloves if it is necessary to remove any parts for installing, cleaning or servicing.
- Activating any switch ON before completing installation may cause ignition or an explosion.
- Due to the size and weight of this range hood, two people installation is recommended.

## TO REDUCE THE RISK OF FIRE, ELECTRIC SHOCK, OR INJURY TO PERSONS:

- For general ventilating use only . DO NOT use to exhaust hazardous or explosive materials and vapors.
- The combustion air flow needed for safe operation of fuel-burning equipment may be affected by this unit's operation.

Follow the heating equipment manufacturer's guideline and safety standards such as those published by the National Fire Protection Association (NFPA), and the American Society of Heating , Refrigeration and Air Conditioning Engineers (ASHRAE), and the local code authorities.

- Before servicing or cleaning unit, switch power OFF at service panel and lock service panel to prevent power from being switched ON accidentally.
- Clean grease laden surfaces frequently. To reduce the risk of fire and to disperse air properly, make sure to vent air outside.  
DO NOT vent exhaust into spaces between walls, crawl spaces, ceiling, attics or garages.
- Ducted fans MUST always be vented to the outdoors.

- Use only metal ductwork and this unit MUST be grounded.
  - Sufficient air is needed for proper combustion and exhausting of gases through the duct to prevent back drafting.
  - When cutting or drilling into wall or ceiling, be careful not to damage electrical wiring or other hidden utilities.
  - All electrical wiring must be properly installed, insulated and grounded.
  - Old duct work should be cleaned or replaced if necessary to avoid the possibility of a grease fire.
  - Check all joints on duct work to insure proper connection and all joints should be properly taped.
  - Use this unit only in the manner intended by the manufacturer. If you have questions, contact the vendor.
- 
- Keep all fan, baffle, spaces filter, grease tunnel, oil container and grease-laden surfaces clean. Grease should not be allowed to accumulate on fan, baffle, spaces filter, grease tunnel and oil container.
  - Always turn range hood ON when cooking at high heat or when cooking flaming foods.
  - Use high settings on cooking range only when necessary.
  - Never leave surface units unattended at high settings. Boilovers cause smoking and greasy spill overs that may ignite.
  - Heat oils slowly on low or medium settings
  - Clean ventilating fan frequently.
  - Always use appropriate cook ware and utensils size.  
Always use cookware appropriate for the size of the surface element.
- 
- SMOTHER FLAMES with a close-fitting lid, cookie sheet, or metal tray, then turn OFF the burner . BE CAREFUL TO PREVENT BURNS. NEVER PICK UP A FLAMING PAN—you may be burned.  
KEEP FLAMMABLE OR COMBUSTIBLE MATERIAL AWAY FROM FLAMES.  
If the flames DO NOT go out immediately, EVACUATE AND CALL THE FIRE DEPARTMENT or dial your local emergency service immediately.

- **DO NOT USE WATER**, including wet dishcloths or towels — a violent steam explosion will result.
- Use an extinguisher **ONLY** if:
- You know you have a Class A, B, C extinguisher, and you already know how to operate it.
- The fire is small and contained in the area where it is started.
- The fire department is being called.
- You can fight the fire with your back to an exit.

## **TO REDUCE THE RISK OF INJURY TO PERSONS IN THE EVENT OF A GAS LEAKS:**

- Extinguish any open flame
- **DO NOT** turn on the range hood fan or any type of ventilator.
- **DO NOT** turn on the lights or any type of appliance
- Open all doors and windows to disperse the gas. If you still smell gas, call the gas company and fire department, or dial your local emergency service immediately.
- Your safety and the safety of others is very important. We have provided many important safety messages in this manual and on your appliance. Always read and obey all safety messages. All safety messages will tell you what the potential hazard is, tell you how to reduce the chance of injury, and tell you what can happen if the instructions are not followed.



This is the safety alert symbol. This symbol alerts you to potential hazards that can hurt you and others. All safety messages will follow the safety alert symbol and the word "WARNING".

The manufacturer and/or distributor/reseller declines all responsibility in the event of failure to observe the instructions given here for installation, maintenance and suitable use of the product.

The manufacturer and/or distributor/reseller further declines all responsibility for injury due to negligence and the warranty of the unit automatically expires due to improper maintenance.

The manufacturer and/or distributor/reseller will not be held responsible for any damages to personal property or real estate or any bodily injuries whether caused directly or indirectly by the range hood.

# Important Safety Notice

## READ ALL INSTRUCTIONS BEFORE INSTALLING AND OPERATING THIS APPLIANCE

- The installation in this manual is intended for qualified installers, service technicians or persons with similar qualified background. Installation and electrical wiring must be done by qualified professionals and in accordance with all applicable codes and standards, including fire-rated construction.
- DO NOT attempt to install this appliance yourself. Injury could result from installing the unit due to lack of appropriate electrical and technical background.
- Range hood may have very sharp edges; please wear protective gloves if it is necessary to remove any parts for installing, cleaning or servicing.
- Activating any switch ON before completing installation may cause ignition or an explosion.
- Due to the size and weight of this range hood, two people installation is recommended.

## TO REDUCE THE RISK OF FIRE, ELECTRIC SHOCK, OR INJURY TO PERSONS:

- For general ventilating use only . DO NOT use to exhaust hazardous or explosive materials and vapors.
- The combustion air flow needed for safe operation of fuel-burning equipment may be affected by this unit's operation.  
Follow the heating equipment manufacturer's guideline and safety standards such as those published by the National Fire Protection Association (NFPA), and the American Society of Heating , Refrigeration and Air Conditioning Engineers (ASHRAE), and the local code authorities.
- Before servicing or cleaning unit, switch power OFF at service panel and lock service panel to prevent power from being switched ON accidentally.
- Clean grease laden surfaces frequently. To reduce the risk of fire and to disperse air properly, make sure to vent air outside.  
DO NOT vent exhaust into spaces between walls, crawl spaces, ceiling, attics or garages.
- Ducted fans MUST always be vented to the outdoors.

## **WARNING**

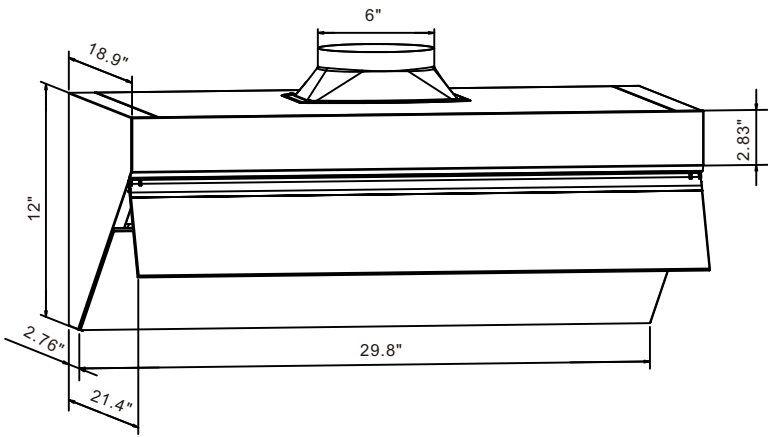
TO REDUCE THE RISK OF INJURY TO PERSONS IN THE EVENT OF A GREASE FIRE OBSERVE THE FOLLOWING:

1. SMOTHER FLAMES with a close-fitting lid, cookie sheet or metal tray, and then turn off the burner. If the flames do not go out immediately, evacuate and call the fire department.
2. NEVER PICK UP A FLAMING PAN. --You may be burned.
3. DO NOT USE WATER, including wet dish clothes or towels --a violent steam explosion will result.
4. Use an extinguisher ONLY if:  
You know you have a class ABC extinguisher and you already know how to operate it  
The fire is small and contained in the area where it started.  
The fire department is being called.  
You can fight the fire with your back to an exit.

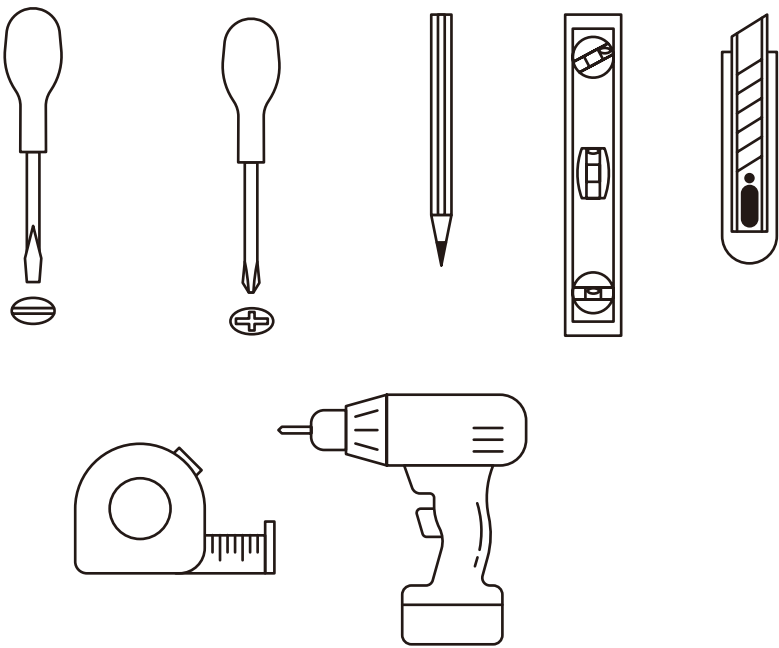
## **CAUTION**

1. To reduce the risk of fire and to properly exhaust air, be sure to duct air outside. Do not vent exhaust air into spaces within walls or ceiling or into attics, crawl spaces or garages.
2. Take care when using cleaning agents or detergents.
3. Avoid using food products that produce flames under the range hood.
4. The range hood must only be used for the exhaust of cooking fumes in home kitchens. The supplier disclaims all liability for any other use of the appliance.
5. Two installers are recommended because of the large size and weight of this hood.
6. Use with approved cord-connection kit only.
7. Please read specification label on product for further information and requirements.

# Opening size



# Tools Needed

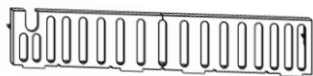




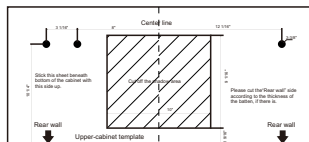
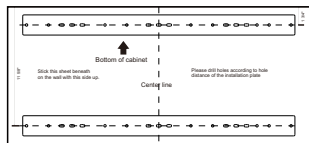
# Parts Supplied



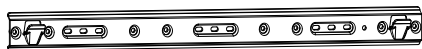
Range Hood×1



Baffe Filter×1



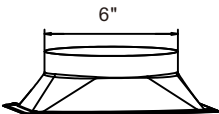
Installation board x1



Hanging bracket x1



79" vent pipe x1



Air exit x 1



A.



B.



C.

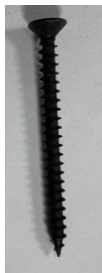
A. 4pcs-ST5x40 screws

B. 5pcs-Wall anchors

C. 5pcs-ST4x40 screws



M5x75  
3pcs



Stx60  
5pcs



Gypsum screws  
5pcs



2pcs-M4x12



2pcs gasket 15



2pcs rubber

# Venting Requirements

Vent system must terminate to the outside (roof or side wall).

DO NOT terminate the vent system in an attic or other enclosed area.

DO NOT use 4" (10.2 cm) laundry-type wall caps.

Use metal/aluminum vent only. Rigid metal/aluminum vent is recommended.

DO NOT use plastic vent.

Always keep the duct clean to ensure proper airflow.

Calculate the following figures before installation:

1. Distance from the floor to the ceiling.
2. Distance between the floor to the countertop/stove (US Standard: 36").
3. Distance between the countertop/stove to the range hood (recommend \*28" to 31").
4. Height of hood and duct cover.

## For the most efficient & quiet operation:

A distance of 28" to 31" is recommended between stove top and the bottom of range hood.

It is recommended that the range hood be vented vertically through the roof through 6" (15.2 cm) or bigger round metal/aluminum vent work.

The size of the vent should be uniform.

Use no more than three 90° elbows.

Make sure there is a minimum of 24" (61 cm) of straight vent between the elbows if more than one elbow is used.

DO NOT install two elbows together.

The length of vent system and number of elbows should be kept to a minimum to provide efficient performance.

The vent system must have a damper. If roof or wall cap has a damper, DO NOT use damper (if supplied) on top of the range hood.

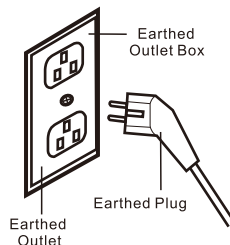
Use silver tape or duct tape to seal all joints in the vent system.

Use caulking to seal exterior wall or roof opening around the cap.

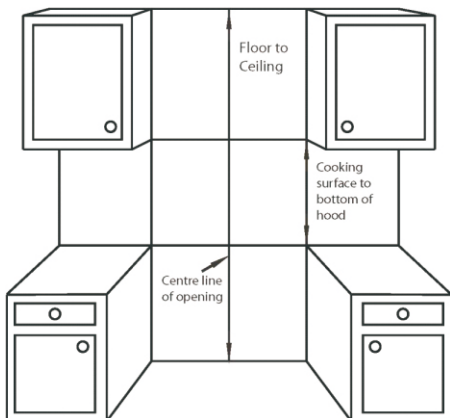
# INSTALLATION INSTRUCTIONS

Before you start...

1. Read this manual carefully and completely.
2. The range hoods conform to related appliances standards. Please check your local building codes for any additional requirements.
3. The appliance has been manufactured as class I, therefore earthed connection is necessary. The range hood must be installed so that the plug is easily accessible.



## Planning Your Installation



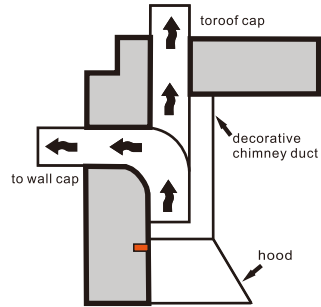
1. Measure the floor to ceiling height. This hood can be installed on walls between 8" and 9" tall.
2. Find the centre point of your opening. Mark a plumb line through this point from ceiling to your range/cook-top.
3. Check your range/cook-top User Manual for the minimum distance above your cooking surface. The minimum distance between any element or flame height and the nearest combustible surface is 61cm (24").
4. Decided where the ductwork will run between the hood and the outside. Short, straight duct runs will provide the most air flow.
5. If a recirculating kit is necessary, you may purchase one through your dealer.

## Unpacking

Remove the packaging with the product in place. Cut off the packing ribbons and carefully cut open the packaging (do not cut too deeply), remove the packaging. Check that the product is free from transport damage. Any damage shall be reported immediately to the carrier or retailer. Damage, faults and missing parts must be reported immediately to the retailer

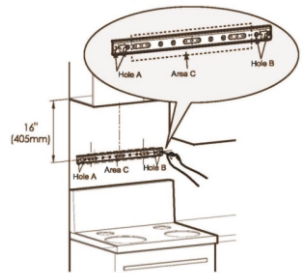
# Installing the Ductwork

1. Plan where the ductwork will run between the hood and the outside.  
The hoods exhaust vertically but can be ducted to the rear behind the chimney duct through an outside wall or vertically up through the ceiling to the roof. A short straight duct run will produce the most air flow. Length and elbows will reduce the efficiency of the blower.
2. Install a roof or wall cap. Connect a 6" round metal duct to the cap and work backwards toward the hood. Ensure joints are completely sealed with duct tape.



# Fixing to the Wall

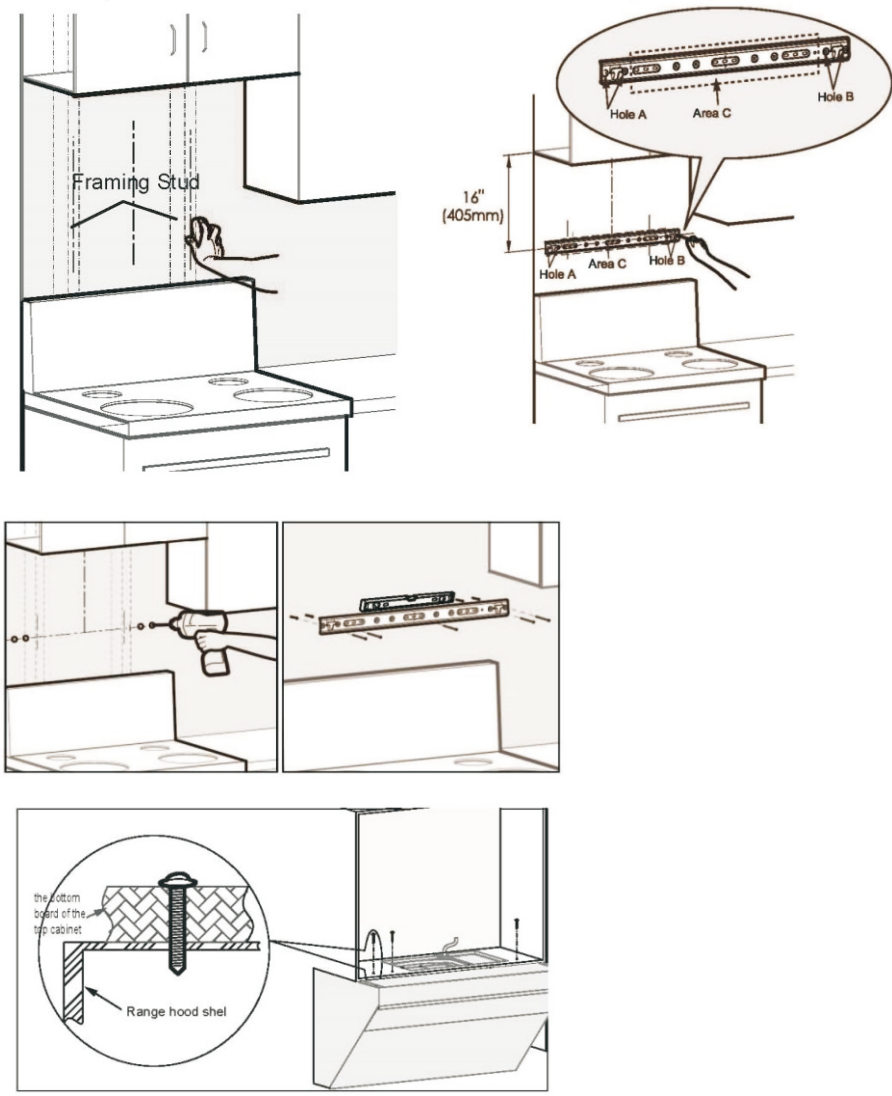
1. Before mounting the hood, plug in and test all functions for proper operation.
2. Removed the filters from the bottom of the hood to prevent damage during the installation.
3. With assistance, hold the hood temporary in position ensuring the bottom is above the minimum clearance for the cooking surface. Mark on the wall the holes for the two mounting screws.
4. Drill the holes (A) at the distances indicated. Use the appropriate screws and screw anchors for your wall type (e.g. reinforced concrete, drywall, etc.). If necessary, prepare back wall with cross framing for secure installation.
5. Mount the hood on the wall screws. Align it in a horizontal position relative to cabinets. When the hood has been adjusted, secure unit by tightening screws (A).
6. Connect a 6" aluminum duct tube (not included) to the exhaust piece using duct tape on all seals. (C)



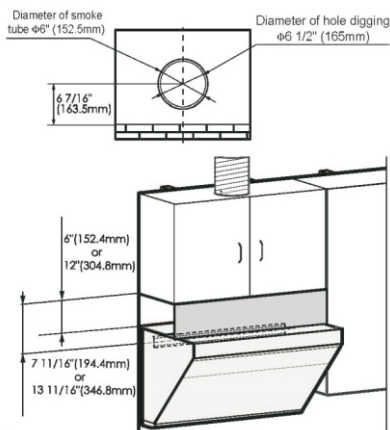
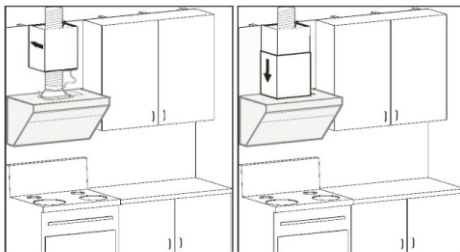
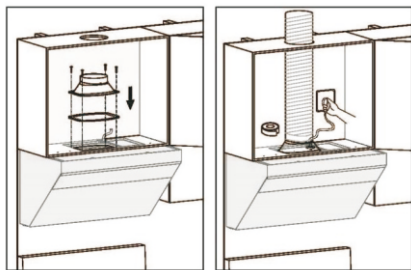
# Fixing the Decorative Chimney Duct

1. Carefully loosen but do not separate the telescopic chimney duct pieces.
2. Arrange the electrical power supply within the dimensions of the decorative chimney flu.
3. Adjust the width of the support bracket to match the upper duct. Fix it to the ceiling using the screws (B) so that it is centered in line with your hood and at a distance from the ceiling indicated.

# Installing Guideline



Note: The above installation guideline for references only, please contact your local dealer for a installation service.



☐ **REMEMBER!**

☐

*The distance between the top of the hob and the lowest part of the cooker hood must be at least 65 cm.*

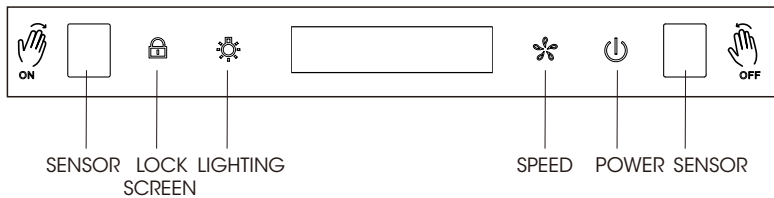
☐ *If a two-part connection tube is used, the lower section must sit outside the upper section.*

☐ *Do not connect the cooker hood exhaust to a duct used to circulate hot air or vent steam from another appliance.*

☐ *Always use protective gloves when installing the appliance!*

# Operations

## Detroit ( 3 Speed push button)



### OPERATION PROCEDURE

#### 1. SENSOR

Two sensor windows are for turning on and off Light, speed. Keep a distance from switch panel about 4"-6" from left window to right window to turn on the light and speed, from right window to left window to turn off.

#### 2. LOCK SCREEN (Touch control)

The LOCK SCREEN locks the entire control panel's functionality. Once pressed and held for 2 seconds, you will hear a "beep" sound and the LOCK SCREEN button will illuminate fully. In order to unlock the control panel, you must press and hold the LOCK SCREEN for another 2 seconds. The control panel functionalities will unlock and the button will return to be engaged when the fan is in operation. If LOCK SCREEN is pressed at that time, an alarm sound will engage.

#### 3. POWER

The POWER button activates the range hood. once you press the POWER button, the screen panel will fully illuminate and the other buttons on the control panel will display low illumination. Lightly press the POWER button again to turn off the range hood. Once the range hood is off, all buttons will cease to illuminate and the smoke baffle flippers with the exception of the LOCK SCREEN button, the control panel's functions will only work when the POWER button is active.

#### 4. SPEED CONTROL

When in standby mode, press to start speed 3, speed 2 and speed 1.

#### 5. LIGHTING

The LIGHT button opens the smoke baffle flippers and turns on the lights. Once pressed, the icon will fully illuminate. Press the light icon again and the light will turn off and the button will return to low illumination.

## 6. TIME

### A. 24 hour and 12 hour setting:

The system defaults to 24 hours. Touch and hold LIGHT button for 3 seconds to change 24 hours and 12 hours. After set 24 hours or 12 hours, need to reset the time.

### B. Time setting:

In standby mode, Touch SPEED key 3 seconds to set hour, LOCK key for hour down and LIGHT key for hour up, press Speed key again to confirm it or wait 5 seconds to automatically confirm; Touch SPEED key again to set minute, LOCK key for minute down and light key for minute up, press SPEED key to confirm it or wait 5 seconds to automatically confirm.

## 7. DELAY

The POWER button activates a two-minute delay. Once pressed during operation, the button will fully illuminate. One minute later, the range hood stops operating and the smoke baffle flippers closes automatically.

If you press the DELAY button once during the one-minute delay, the range hood will resume operating and the DELAY button will return to low illumination.

If you press any other control panel button once during the one-minute delay, the range hood will resume operating and the DELAY button will return to low illumination. The range hood will operate as the pressed button suggests.



# Trouble shooting

## If the range hood or LED light does not work after installation

- Check if the range hood has been plugged in, make sure that all power has been turned back ON, fused not blown and all electrical wiring are properly connected.
- Swap out light assembly to working ones to determine whether it is caused by defective bulbs. See replacing the bulbs on Page 23.

The range hood vibrates when the blower is on

- The range hood might not have been secured properly on to the ceiling or wall. Check with your installer.

## The blower or fan seems weak

- Check that the duct sized used is at least 6" or 3-1/4 x 10".  
Range hood WILL NOT function efficiently with insufficient duct size.  
For example: 8" duct over 6" hole and loosely secured.
- Check if duct is clogged or if damper unit (half-circular flapper) is not installed correctly or opening properly. A tight mesh on a side wall cap unit might also cause restriction to the airflow.

The lights work but the blower is not spinning at all, is stuck or is rattling.

The blower might be jammed or scraping the bottom due to shipping damage.

Please contact us immediately.

## The hood is not venting out properly.

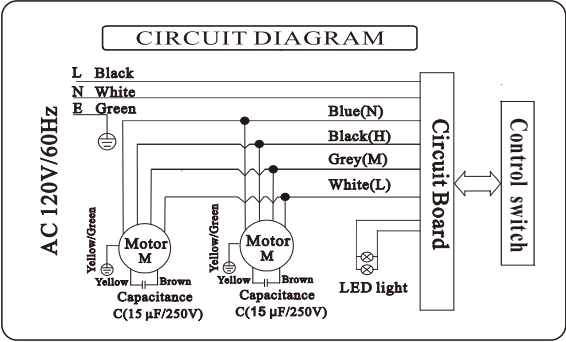
- Make sure the distance between the stove top and the bottom of the hood is within \* 28" and 31" in distance. Due to different ceiling height configurations, recommended height may not be applicable.
- Reduce the number of elbows and length of duct work.  
Check if all joints are properly connected, sealed and taped.
- Make sure the power is on high speed for heavy cooking.

Purpose of the slots/holes/openings near the top of the upper chimney:

- These slots/holes/openings are used to exhaust cleaned air with optional re-circulating kit. If you did not install one, you do not need them.

NOTE: For all other inquiries, please contact your local reseller.

# Wiring Diagram



# Specifications

Body	Stainless Steel / Tempered Glass
Power Rating	120V/60Hz (USA & Canada standard)
General Input Power	300W + # of Light x Voltage of Light
Motor Input Power	150Wx2
Motor Revolution	900 RPM (±10%) to 1100 RPM (±10%)
Levels Of Speed Control	3
Maximum Airflow	1000 CFM
Air Pressure	400 Pa (450 Pa Maximum)
Noise Level (dB)	Approximately 35 to 72 (Lowest to highest Speed)
Motor Type	Twin motors Ultra Quiet
Fan Type	Metal fan
Control Type	Motion control
Filtration Type	Steel Baffle Filter
Illumination	LED light 2Wx2
Venting Size	Top, 6 inches Round
Interference Protection	Radio Frequency Interference Protected

\* Subject to change without notice, please contact your local reseller for details.

# Use and Care Information

## Operations

Read and understand all instructions and warnings in this manual before operating the appliance. Save these instructions for future reference.

Always leave safety grills and filters in place. Without these components, operating blowers could catch on to hair, fingers and loose clothing.

NEVER dispose cigarette ashes ignitable substances, or any foreign objects into blowers.

NEVER leave cooking unattended. When frying, oil in the pan can easily overheat and catch fire. The risk of self-combustion is higher when the oil has been used several times.

NEVER cook on "open "flames under the range hood. Check deep-fryers during use: Superheated oil may be flammable.

## Cleaning

The saturation of greasy residue in the blower and filters may cause increased inflammability. Keep unit clean and free of grease and residue build-up at all times to prevent possible fires.

Filters must be cleaned periodically and free from accumulation of cooking residue (see Maintenance on Page 33). Old and worn filters must be replaced immediately.

Do not operate blowers when filters are removed. Never disassemble parts to clean without proper instructions. Disassembly is recommended to be performed by qualified personnel only. Read and understand all instructions and warnings in this manual before proceeding.

# Maintenance

**SAFETY WARNING:** Never put your hand into area housing the fan while the fan is operating!

For optimal operation, clean range hood and all baffle/spacer/filter/grease tunnel/oil container regularly. Regular care will help preserve the appearance of the range hood.

## Cleaning Exterior surfaces

Clean periodically with hot soapy water and clean cotton cloth. Do not use corrosive or abrasive detergent (e.g. Comet Power Scrub®, EZ-Off® oven cleaner), or steel wool/scoring pads, which will scratch and damage the stainless steel surface. For heavier soil use liquid degrease such as "Formula 409®" or "Fantastic®" brand cleaner.

If hood looks splotchy (stainless steel hood), use a stainless steel cleaner to clean the surface of the hood. Avoid getting cleaning solution onto or into the control panel. Follow directions of the stainless steel cleaner. **CAUTION:** Do not leave on too long as this may cause damage to hood finish. Use soft towel to wipe off the cleaning solution, gently rub off any stubborn spots. Use dry soft towel to dry the hood.

After cleaning, you may use non abrasive stainless steel polish such as 3M® or ZEP®, to polish and buff out the stainless luster and grain. Always scrub lightly, with clean cotton cloth, and with the grain.

**DO NOT** allow deposits to accumulate or remain on the hood.

**DO NOT** use ordinary steel wool or steel brushes. Small bits of steel may adhere to the surface and cause rusting.

**DO NOT** allow salt solutions, disinfectants, bleaches, or cleaning compounds to remain in contact with stainless steel for extended periods. Many of these compounds contain chemicals, which may be harmful. Rinse with water after exposure and wipe dry with a clean cloth.

## Cleaning Filters

**IMPORTANT: Drain oil from oil containers before oil and residue overflow!**

The metal filters fitted by the factory are intended to filter out residue and grease from cooking. It need not be replaced on a regular basis but are required to be kept clean.

Filters should be cleaned after every 30 hours of use.

Remove and clean by hand or dishwasher. Spray "Formula 409®" or equivalent degreasing detergent and leave to soak if heavily soiled. Dry filters and re-install before using hood.

## Replacing Filters

Should aluminum grease filters wear out due to age and prolonged use, please contact your local reseller for replacement filters. (Note: Also replace damaged filter that has punctured or broken mesh, bent or broken frame.)

## Replacing the light light



### WARNING

Light bulb become extremely hot when turned on.

DO NOT touch bulb until switched off and cooled.

Touching hot bulbs could cause serious burns.

## Replacing LED Light Fixture

This range hood uses LED light fixture: 2W Max 12V LED

Make sure the range hood is unplugged or turn OFF breaker and the lights are cool to touch.

Place a flat-head screwdriver between light housing and hood body, gently pry up the light housing and search for the metal clip.

Apply force to the metal clip and pull out the light fixture.

Disconnect the power cable and discard the old light fixture.

Reverse the steps to install a new LED light fixture. Turn ON breaker and range hood to test for operation.

1



2



3



4



# Warranty

## TO OBTAIN SERVICE UNDER WARRANTY:

You must present proof of original purchase date.

Please provide an original dated proof of purchase (sales receipt / invoice) in order to obtain service under warranty.

## Lifetime Motor Warranty

The motor, which is covered by lifetime warranty, should be provided free of charge by your local reseller given it failed due to manufacturing defects. Subject to the conditions and limitations set forth below, your local reseller should, at its option, either repair or replace it with new or refurbished motor to be functionally equivalent to new. The consumer is responsible for all shipping costs.

## One Year Parts Warranty

For one year from the date of original purchase, your local reseller will provide free of charge, non-consumable replacement parts or components that failed due to manufacturing defects. Subject to the conditions and limitations set forth below, your local reseller will, at its option, either repair or replace any part of its products that prove defective by reason of improper workmanship or materials. Repaired parts or replacement products will be provided by your local reseller on an exchange basis, and will be either new or refurbished to be functionally equivalent to new. The consumer is responsible for all shipping costs. Consumable parts not covered by this warranty include but not limited to: Light bulbs metal, aluminum and charcoal filters.

## Who is Covered

This warranty is extended to the original purchaser for products purchased for ordinary home use

## This Warranty Will Be Voided When:

Product damaged through negligence, improper installation, accident, abuse, misuse, natural disaster, insufficient or excessive electrical supply, abnormal mechanical or environmental conditions, or any unauthorized disassembly, repair, modification or failure to follow installation instructions. When product is used commercially or other than its intended purpose. Damaged because of improper connection with equipment of other manufacturers. Repaired or modified by anyone other than your local reseller's authorized agents. This limited warranty also does not apply to any product on which the original identification information has been altered, obliterated or removed, has not been handled or packaged correctly or has been sold as second-hand.

## What is Not Covered:

Consumable parts such as light bulbs, metal and charcoal filters. The natural wear of finish, and wear due to improper maintenance , use of corrosive and abrasive cleaning products, pads, and oven cleaner products. Chips, dents or cracks due to abuse , misuse, freight damage, or improper installation. Damage of product caused by accident, fire, floods or act of God. The manufacturer and or distributor is not liable for, and does not cover under warranty, any loss of properties or any costs associated with removing, servicing, installing, or determining the source of problems with this product. This warranty is valid in the country of the original purchase at retail. It is non-transferable and applies only to the original purchaser and does not extend to subsequent owners of this product. Any applicable implied warranties, including the warranty of merchantability, are limited in duration to a period of express warranty as provided herein beginning with the date of original purchase at retail and, no warranties, whether express or implied, shall apply to this product thereafter.

To obtain warranty service, you may contact your local reseller from which you purchased this product. Please confirm the terms of your local reseller's policies prior to contacting. Typically, you must include product identification information, including model number and serial number with a detailed description of the problem you are experiencing. You must also include proof of the date of original retail purchase as evidence that the product is within the applicable warranty period.

# Disclaimer

Carefully inspect all items for damages before accepting delivery. Note any damages on the freight bill or express receipt. Request name and signature of the carrier's agent and keep copy to support your claim. Upon acceptance of items, owner assumes responsibility for its safe arrival. Report damages to the carrier and file a claim immediately. Failure to do so may result in the denial of your claim. The carrier will furnish you with necessary forms for filing a claim.

Damages caused during transit are not covered under our warranty. Please contact us to file an insurance claim.

Please inspect contents of package(s) carefully upon receiving! We must be notified of any damages and/or missing parts within five (5) days upon your receipt of package(s). Claims will not be accepted after five (5) days. NOTE: Items were thoroughly tested and carefully packed in our factory before shipping.

Products must be returned in good working condition with ALL original parts and documentation packed in ALL original cartons, fillers and shipping cartons. A restocking fee of 15% will be charged for all approved return(s). Exchanges or returns may not be accepted if any packaging is missing.

Make sure to inspect the hood for damages and defects before installation. Appearance flaws of the hood found after installation and not affecting hood performance is not covered under our warranty for returns or exchanges. Service visits not covered under warranty will carry a service charge.

Before Installation: Return for exchange or refund (please see above for acceptable returns). After Installation: NO exchange or refund.



# Contact Us

If you need any assistance, please contact us at +1 905-727-8688 or [info@vesta.kitchen](mailto:info@vesta.kitchen). Please have your order number and model of the range hood ready. This information will help us better respond to your request.

If you need replacement parts, we recommend that you only use genuine parts. Our accessories and parts are engineered and designed specifically for this series of range hood, each is rigorously tested assuring the utmost in durability and reliability providing a factory match, factory-installed appearance and functionality tailored to each individual range hood model.

# **Vesta**

**Simple Kitchen Solutions**

[www.vesta.kitchen](http://www.vesta.kitchen)