

INSTALLATION INSTRUCTIONS

NOTE: INSTALL LEFT AND RIGHT ROLLER RAILS BEFORE SLIDING TANK TRAY INTO POSITION.

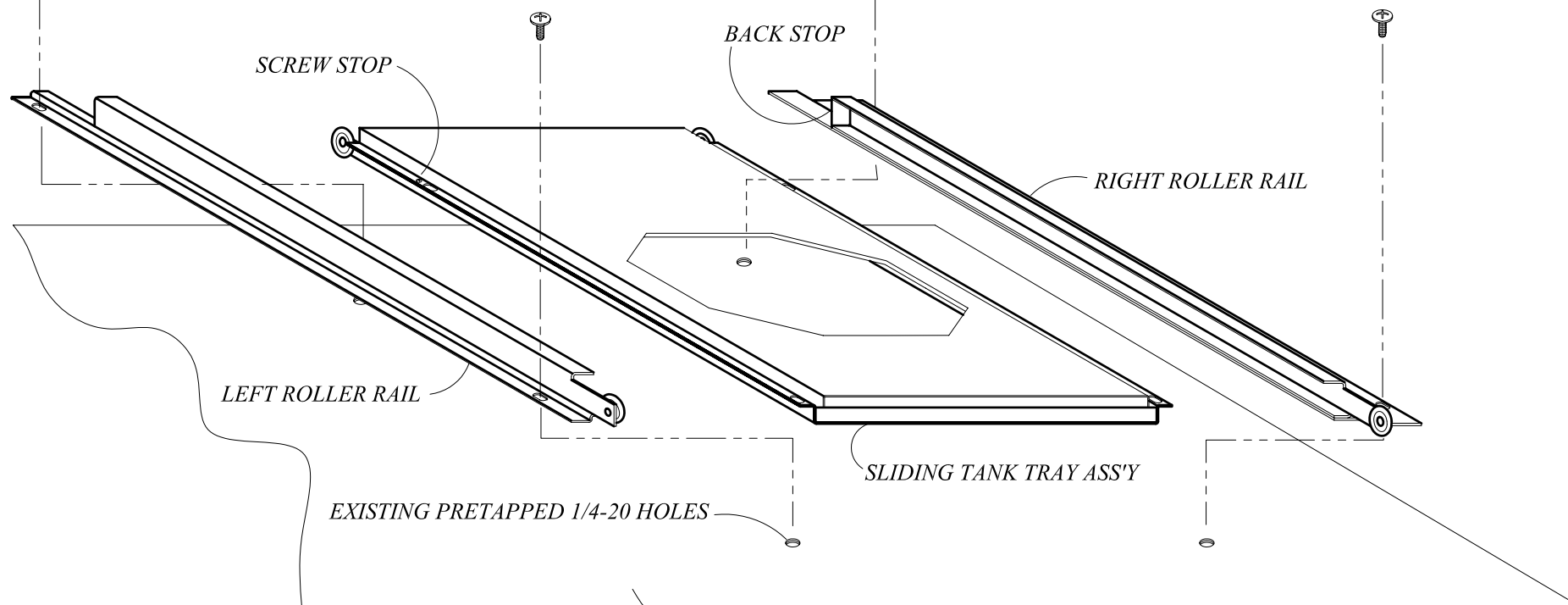
LSTLP (LYNX Sliding Tank Tray)



1/4-20 TRUSS HEAD SCREWS (QTY 4)

STEP 1 Open right door of grill cabinet.
Install **LEFT** Roller Rail as shown
using (2) 1/4-20 Truss Head Screws
Drive screw into existing tapped holes
located at bottom of grill cabinet.

STEP 2 Install **RIGHT** Roller Rail as shown
using (2) 1/4-20 Truss Head Screws.
Drive screw into existing tapped holes
located at bottom of grill cabinet.



STEP 3- Insert Sliding Tank Tray Ass'y by placing
roller wheels of tray over roller wheels
on Left and Right Roller Rails. Lift tray
upward to clear 'Screw Stop' mounted
on Left Roller Rail. Slide tray all the way
inward until it reaches the backstop.

EXISTING FLOOR OF GRILL CABINET