

# PERFEKT-GLIDE-24-REC-2

AEG

## 24" Fully-Integrated Glide-Out Recirculating Range Hood



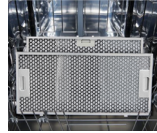
### Under Cabinet Glide Out

This hood extends to give a greater attachment and extraction area. When not in use the glide out filter can be retracted for a flush finish.



### LED Lighting

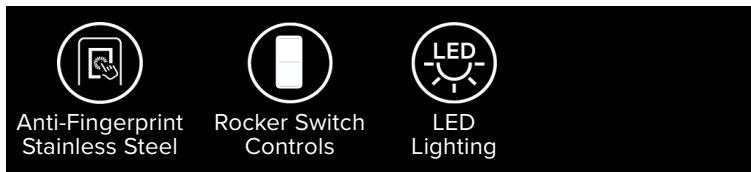
These energy efficient LED lights give you excellent visibility on the cooking process.



### Dishwasher Safe Filters

The long life honeycomb filters can be washed safely in the dishwasher, making cleaning your filters simple.

### KEY FEATURES



### RANGE HOOD FUNCTIONS



### Additional Features

- Under cabinet glide/slide out hood - Powder coating grey
- Recirculating
- 2 x Speed adjustment
- 300 CFM / 65 dBA
- Rocker switch controls
- 2 x Rectangle LED lights - Color Temp: 3,200K
- 2 x Honeycomb filters
- Replacement charcoal filters available (CF-D)
- AC Capacitor motor
- Stainless steel handle - can be replaced with matching cabinetry

### HANDLE REPLACEMENT DIMENSIONS

**Width:** 23<sup>17/32</sup>" (598mm)

**Height:** 3<sup>5/2</sup>" (80mm)

### DIMENSIONS

#### Appliance Dimensions (WxHxD)

**W:** 23<sup>17/32</sup>" x **H:** 8<sup>5/16</sup>" x **D:** 11<sup>1/16</sup>"

**W:** 598mm x **H:** 211mm x **D:** 281mm

#### Cut Out Dimensions (WxHxD)

**W:** min. 23<sup>5/8</sup>" - max. 24" x **H:** 8<sup>3/8</sup>" x **D:** 12"

**W:** min. 600mm - max. 610mm x **H:** 213mm x **D:** 305mm

### TECHNICAL DETAILS

**Motor Power:** 130W

**Volts (V):** 120 V

**Frequency (Hz):** 60 Hz

**Amperage (Amp):** 15 Amp

\*Supplied with a Canadian plug and 1m long cord.

# PERFEKT-GLIDE-24-REC-2



## Installation Details

### PRODUCT DIMENSIONS (INCH/MM)

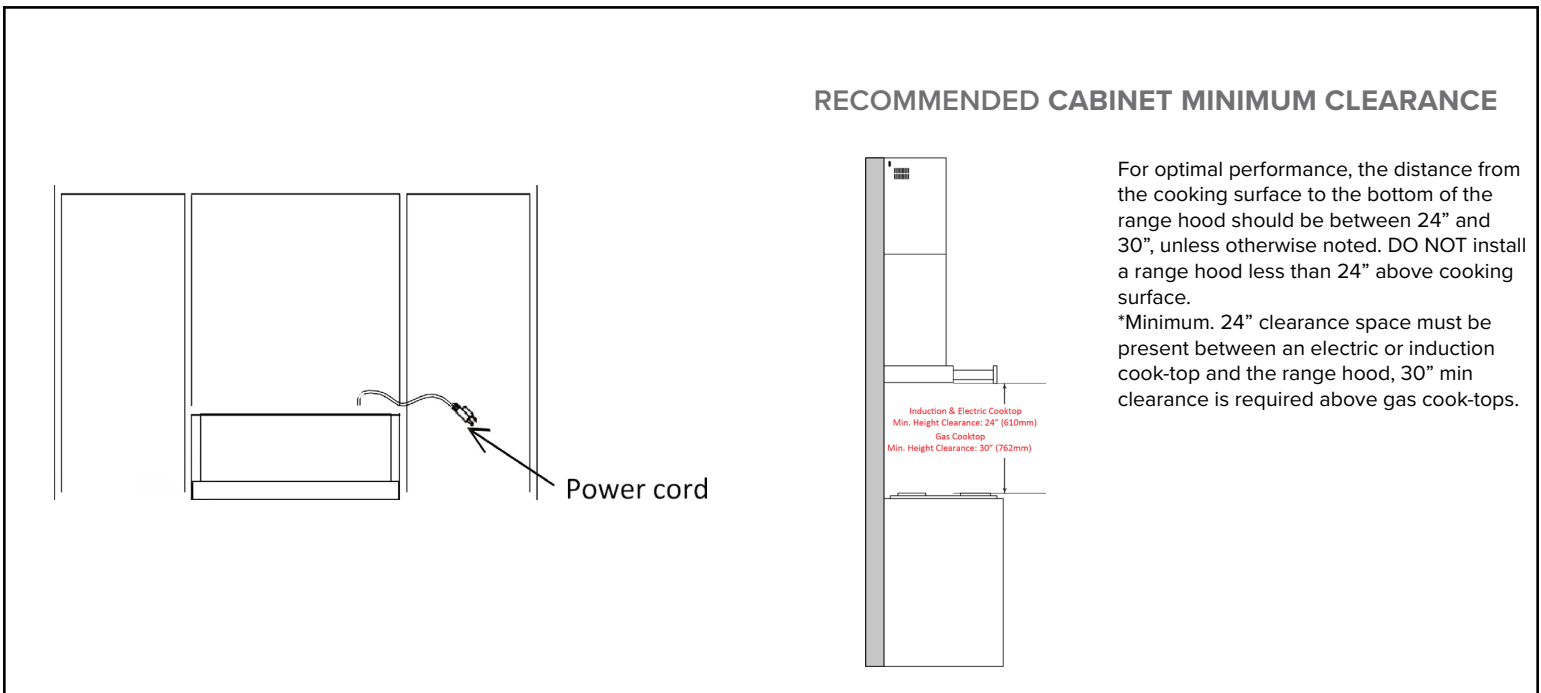
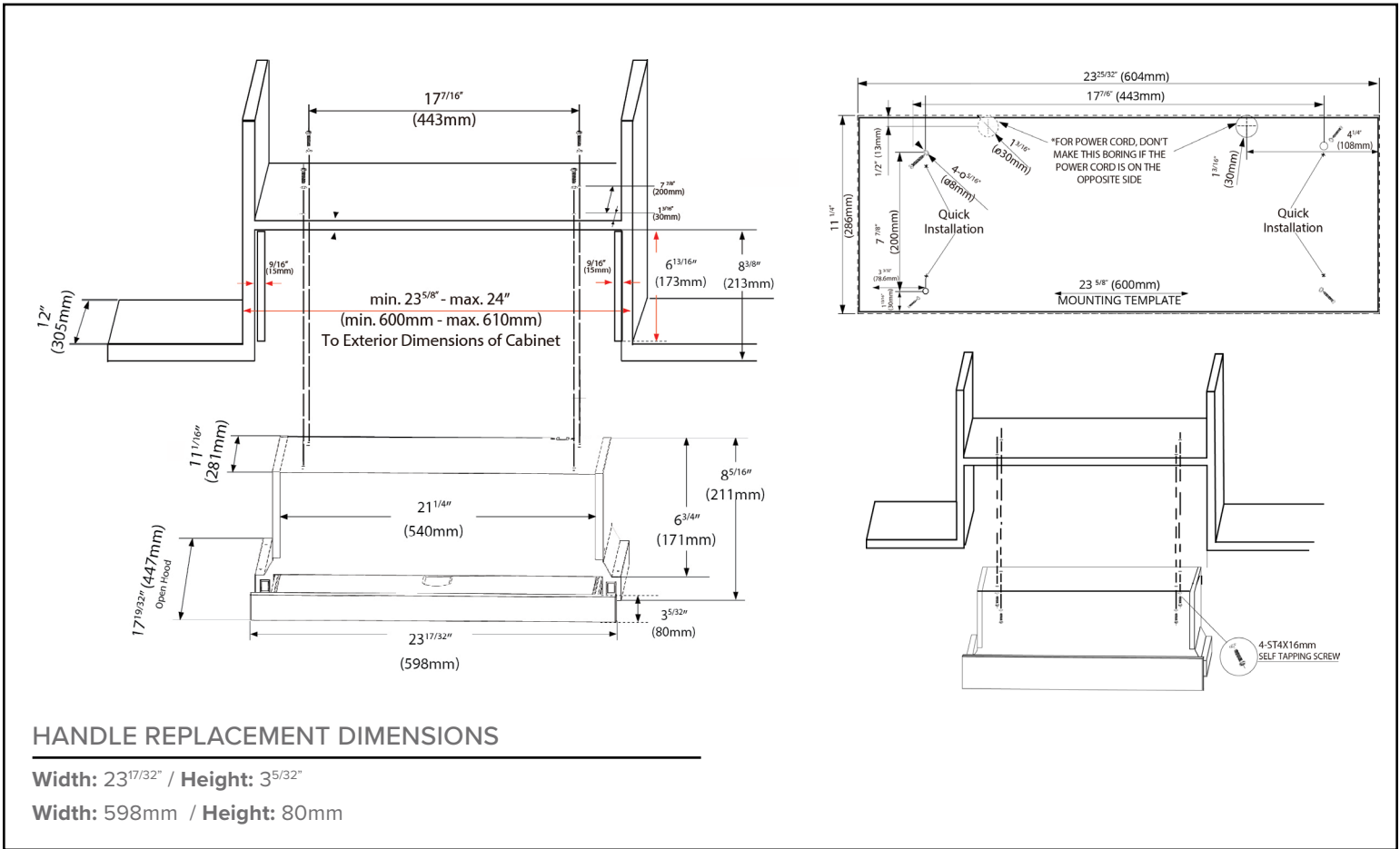
Width: 23<sup>17/32</sup>" / Height: 8<sup>5/16</sup>" / Depth: 11<sup>1/16</sup>"

Width: 598mm / Height: 211mm / Depth: 281mm

### CUT-OUT DIMENSIONS (INCH/MM)

Width: min. 23<sup>5/8</sup>" - max. 24" / Height: 8<sup>3/8</sup>" / Depth: min. 12"

Width: min. 600mm - max. 610mm / Height: 213mm / Depth: 305mm



# AEG

## WARRANTY INFORMATION

AEG Appliances are designed and manufactured to the highest standards. Each appliance is covered by a comprehensive 2-year parts and labour warranty. Refer to product warranty policy for complete terms and conditions.

## FOR PARTS & SERVICE

### Euro-Parts & Service

39822 Belgrave Road, Belgrave, ON. N0G 1E0 1 866 722 2262  
[www.euro-parts.ca](http://www.euro-parts.ca) · [parts@euro-parts.ca](mailto:parts@euro-parts.ca) · [service@euro-parts.ca](mailto:service@euro-parts.ca)

AEG appliances are imported and distributed in North America by Euro-Line Appliances Inc. For more information, please visit one of our showrooms or [www.ela.ca](http://www.ela.ca) / [www.elawest.ca](http://www.elawest.ca)

### EURO-LINE APPLIANCES INC.

871 Cranberry Court Oakville, ON  
L6L 6J7 Canada  
905 829 3980  
1 800 421 6332  
[info@ela.ca](mailto:info@ela.ca)

### EURO-LINE APPLIANCES INC.

101-1014 Homer Street Vancouver,  
BC V6B 2W9 Canada  
604 235 3980  
1 855 ELA WEST (352 9378)  
[infowest@ela.ca](mailto:infowest@ela.ca)